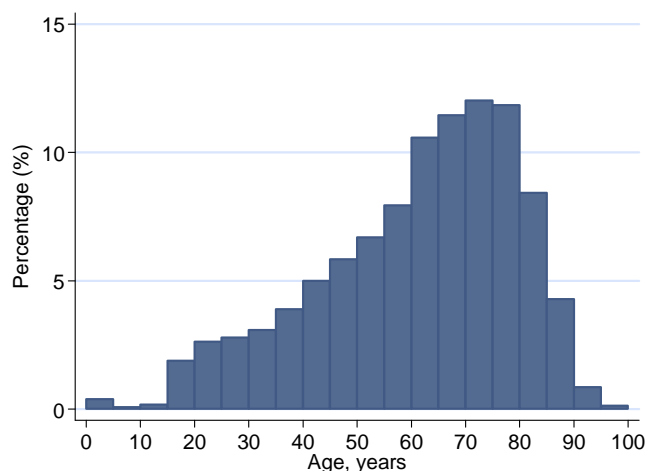


Key results from the Case Mix Programme Database

Based on 115,674 admissions to 200 NHS adult, general critical care units, 1 April 2010 to 31 March 2011

Demographics

Number of admissions		115,674
Number of patients		107,070
Age (years), mean (SD)		60.5 (18.4)
Sex (male), n (%)		64,297 (55.6)
Number of severe conditions in past medical history*,		
0		95,526 (83.2)
1		13,429 (11.7)
2		4,532 (4.0)
n (%)	3 or more	1,293 (1.1)
Surgical status, n (%)	Elective/scheduled	25,944 (22.4)
	Emergency/urgent	20,596 (17.8)
	Non-surgical	69,111 (59.8)



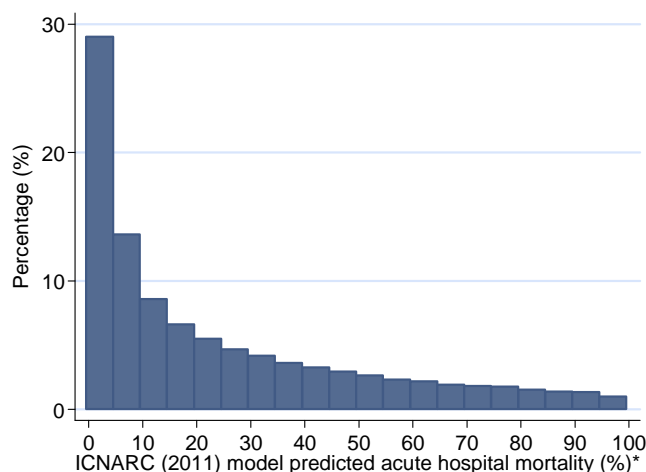
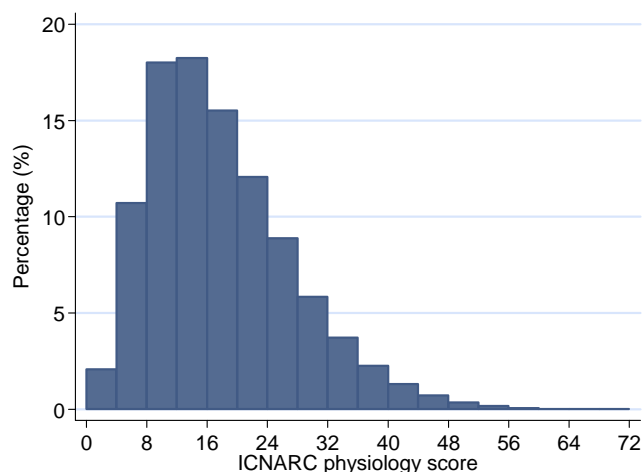
* No evidence to assess past medical history for 894 (0.8%) admissions

ICNARC (2011) model

Physiology score, mean (SD)	17.4 (9.5)
Predicted risk of acute hospital mortality* (%), median (IQR)	14.2 (4.0, 38.8)
Overall predicted risk of acute hospital mortality* (%)	24.7

* Excluding: 8 (0.01%) admissions with insufficient data

Distribution of ICNARC physiology score and ICNARC (2011) model predicted risk of acute hospital mortality



* Excluding 8 (0.01%) admissions with insufficient data

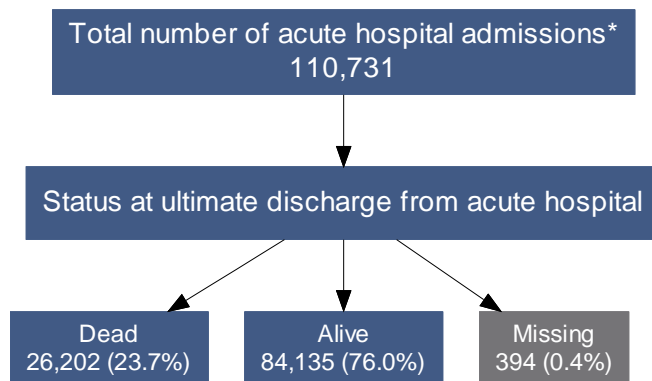
Infection

On admission		
MRSA, n (%)		3,098 (2.7)
VRE, n (%)		186 (0.2)
C.diff, n (%)		590 (0.5)
Unit-acquired*		
MRSA, n (%)		582 (1.0)
VRE, n (%)		191 (0.3)
C.diff, n (%)		345 (0.6)
Unit-acquired infections present in blood, n (%)		1,294 (2.1)

* Amongst admissions staying in the ICU for longer than 48 hours and excluding those with this infection on admission

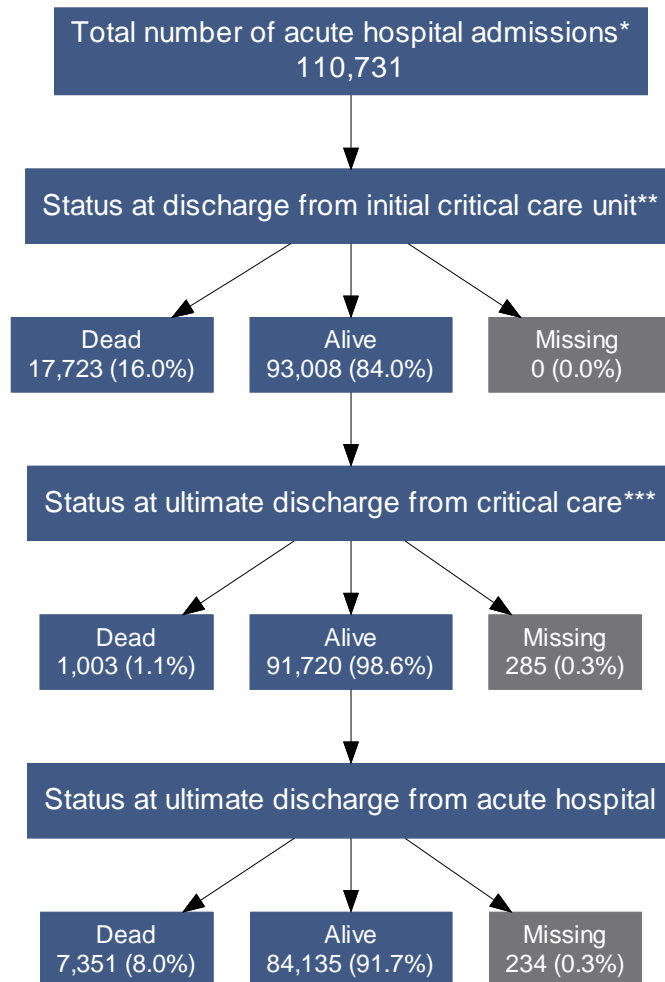
Overall outcome flow

The overall outcome flow shows the ultimate outcome for all acute hospital admissions with a critical care unit stay.



Staged outcome flow

The staged outcome flow shows the outcome at different stages from initial critical care unit discharge to ultimate discharge from acute hospital.



* Excluding: 4,943 (4.3%) readmissions to the critical care unit during the same acute hospital stay

** Where more than one critical care unit admission exists for a patient during the same hospital stay, then the outcome for the first admission has been used

*** For all patients discharged alive from the initial critical care unit, including those not transferred to another critical care unit

Crude mortality

CMP unit mortality*, n (%)	All admissions	18,580 (16.1)
	Elective/scheduled	492 (1.9)
	Emergency/urgent	2,459 (11.9)
	Non-surgical	15,628 (22.6)
Ultimate acute hospital mortality**, n (%)	All admissions	26,202 (23.7)
	Elective/scheduled	1,299 (5.1)
	Emergency/urgent	4,016 (20.4)
	Non-surgical	20,882 (32.1)

* Mortality at discharge from the CMP unit. 0 (0%) admissions with missing data

** Excluding: 4,943 (4.3%) readmissions within the same acute hospital stay; 394 (0.4%) admissions with missing data

Organ donation

Referral to coordinator for solid organ/tissue donation*, n (%)	3,252 (17.5)
Assent for solid organ/tissue donation**, n (%)	1,232 (37.9)
Solid organ/tissue donor***, n (%)	917 (74.4)

* Amongst non-survivors at ICU discharge

** Amongst non-survivors at ICU discharge referred to an organ/tissue coordinator

*** Amongst non-survivors at ICU discharge referred to an organ/tissue coordinator with assent

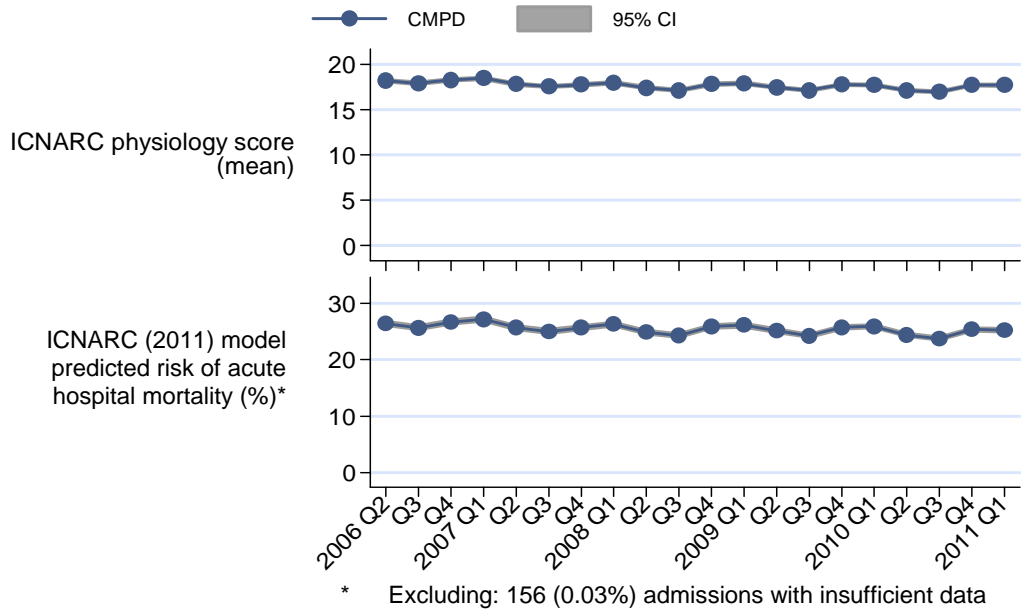
Length of stay (LOS)

		Median (IQR)	Mean (SD)
CMP unit LOS* (days)	All admissions	2.2 (1.0, 5.2)	5.0 (8.8)
	Unit survivors	2.2 (1.0, 5.1)	4.9 (8.6)
	Unit non-survivors	2.1 (0.8, 6.0)	5.4 (9.9)
Total acute hospital LOS** (days)	All admissions	13 (6, 27)	22.8 (32.1)
	Acute hospital survivors	14 (7, 29)	24.6 (33.0)
	Acute hospital non-survivors	8 (2, 20)	17.0 (28.1)

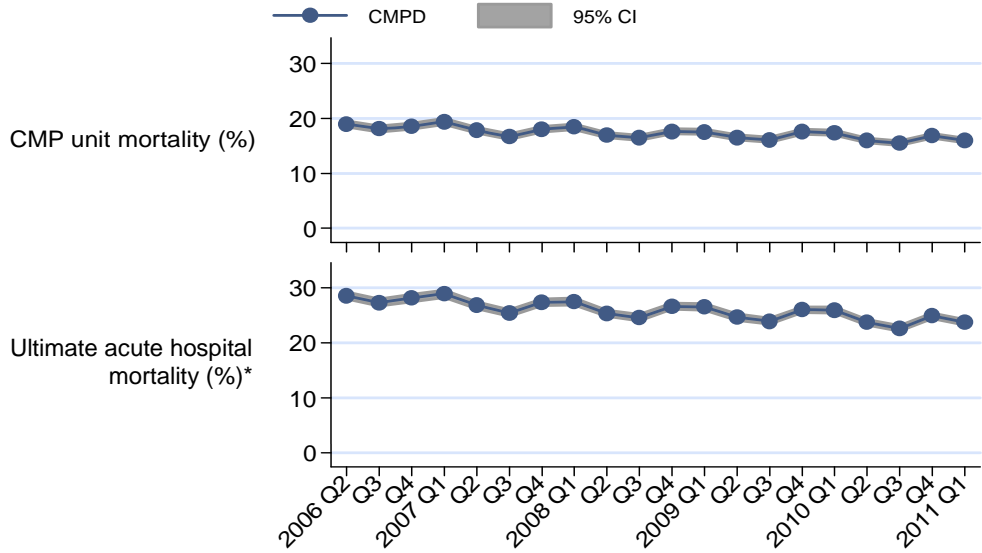
* Does not include continuous critical care pre-/post-admission to the CMP unit. Excluding: 4 (0.003%) admissions with missing data

** Excluding: 4,943 (4.3%) readmissions within the same acute hospital stay; 1,419 (1.3%) admissions with missing data

ICNARC physiology score and ICNARC (2011) model



Mortality



Length of stay

