

## ICNARC report on COVID-19 in critical care 29 May 2020

This report presents analyses of data on patients critically ill with confirmed COVID-19 reported to ICNARC up to 4pm on 28 May 2020 from critical care units participating in the Case Mix Programme (the national clinical audit covering all NHS adult, general intensive care and combined intensive care/high dependency units in England, Wales and Northern Ireland, plus some additional specialist and non-NHS critical care units). Please note that adult critical care units in Scotland, paediatric intensive care units and neonatal intensive care units do not participate in the Case Mix Programme.

### Reporting process

Critical care units participating in the Case Mix Programme are asked to:

- notify ICNARC as soon as they have an admission with confirmed COVID-19;
- submit early data for admissions with confirmed COVID-19, including demographics and first 24-hour physiology, as soon as possible after the end of the first 24 hours in critical care;
- resubmit data for the whole critical care stay, including critical care outcome and organ support, when the patient leaves critical care; and
- submit final data when the patient leaves acute hospital.

The same data are reported for an historic cohort of patients critically ill with viral pneumonia (non-COVID-19) admitted between 1 January 2017 and 31 December 2019.

### Contents

Participation and population coverage .....	4
Patient characteristics .....	7
Patient characteristics by ethnicity .....	11
Patient characteristics by receipt of organ support .....	13
Outcomes, length of stay and organ support .....	17
Outcomes by patient characteristics .....	21
Outcomes by receipt of organ support .....	23
Multivariable analyses .....	29
Data completeness .....	33
Definitions .....	34
Acknowledgement .....	35

## List of tables

---

Table 1	Patient characteristics: demographics.....	7
Table 2	Patient characteristics: medical history and indicators of acute severity * .....	8
Table 3	Patient characteristics: demographics by ethnicity .....	11
Table 4	Patient characteristics: medical history and indicators of acute severity by ethnicity .....	12
Table 5	Patient characteristics: demographics by receipt of respiratory support *.....	13
Table 6	Patient characteristics: medical history and indicators of acute severity by receipt of respiratory support * .....	14
Table 7	Patient characteristics: demographics by receipt of renal support * .....	15
Table 8	Patient characteristics: medical history and indicators of acute severity by receipt of renal support * .....	16
Table 9	Outcome, length of stay and organ support * .....	19
Table 10	Outcome by patient characteristics .....	21
Table 11	Outcome, length of stay and organ support by ethnicity .....	22
Table 12	Outcome by combinations of organ support * .....	24
Table 13	Outcome, length of stay and organ support by receipt of respiratory support * ..	25
Table 14	Outcome, length of stay and organ support by receipt of renal support * .....	26
Table 15	Outcome by receipt of respiratory support * and patient characteristics .....	27
Table 16	Outcome by receipt of renal support * and patient characteristics .....	28
Table 17	Data completeness of key variables.....	33

## List of figures

---

Figure 1	Numbers of patients with data included in this report and outstanding *	4
Figure 2	Number of new patients critically ill with confirmed COVID-19 by date of start of critical care	5
Figure 3	Cumulative number of patients critically ill with confirmed COVID-19 by date of start of critical care	5
Figure 4	Total number of patients critically ill with confirmed COVID-19 by date *	6
Figure 5	Number of admissions critically ill with confirmed COVID-19 by Critical Care Network *	6
Figure 6	Age and sex distribution of patients critically ill with confirmed COVID-19	9
Figure 7	Ethnicity distribution of patients critically ill with confirmed COVID-19	9
Figure 8	Index of Multiple Deprivation (IMD) * distribution of patients critically ill with confirmed COVID-19	10
Figure 9	BMI distribution of patients critically ill with confirmed COVID-19	10
Figure 10	Cumulative outcomes by date of start of critical care *	17
Figure 11	Survival and discharge among patients with at least 24h data received	18
Figure 12	Percentage of patients receiving organ support *	20
Figure 13	Duration of organ support received *	20
Figure 14	Survival and discharge by mechanical ventilation during the first 24 hours *	23
Figure 15	Hazard ratios and 95% confidence intervals from Cox proportional hazards regression model for death within 30 days following start of critical care: demographics and medical history	30
Figure 16	Hazard ratios and 95% confidence intervals from Cox proportional hazards regression model for death within 30 days following start of critical care: physiology (1)	31
Figure 17	Hazard ratios and 95% confidence intervals from Cox proportional hazards regression model for death within 30 days following start of critical care: physiology (2)	32

\* Please see individual notes for Tables/Figures

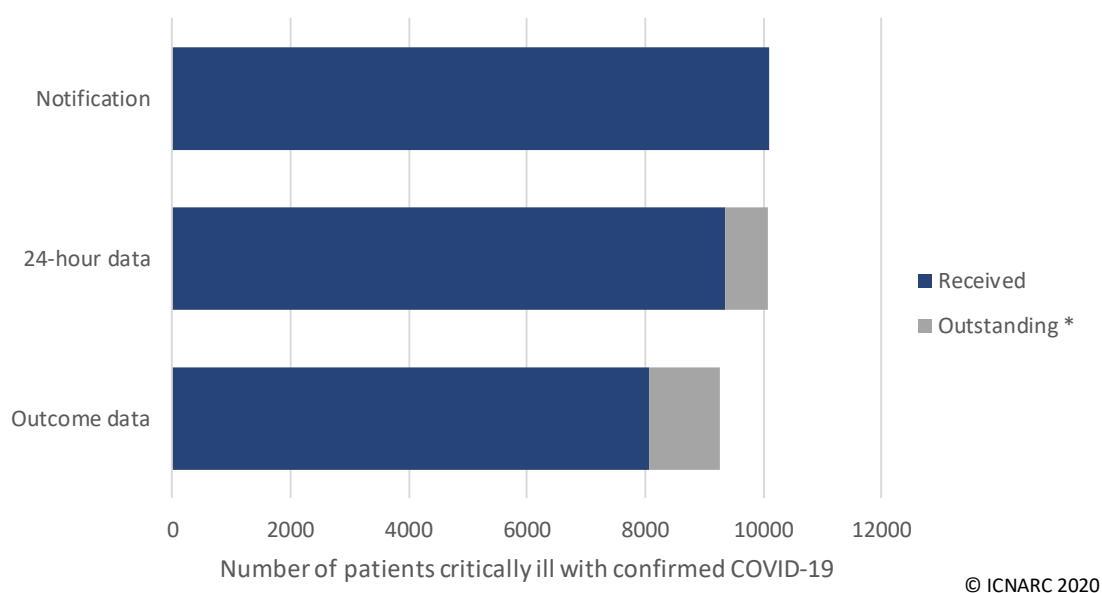
## Participation and population coverage

### Critical care unit participation

Total number of units:	289
Units with at least one patient notified:	252
Units with zero patients:	33
Units with uncertain participation:	4

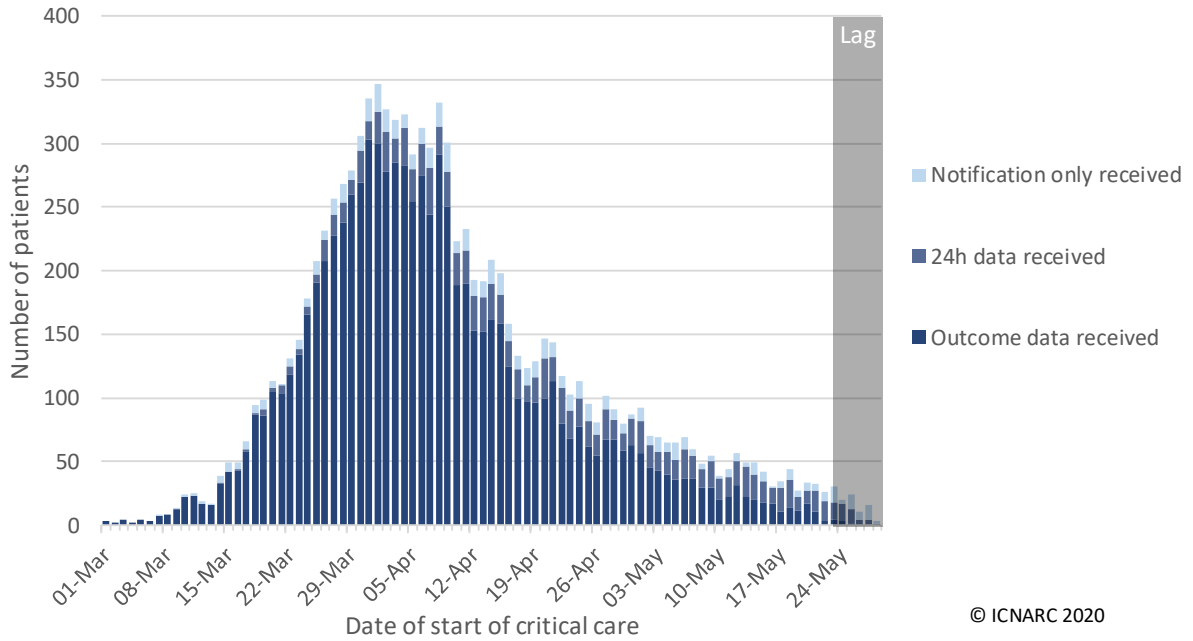
### Admissions to critical care

To date, ICNARC have been notified of 12,086 admissions for critical care with confirmed COVID-19, either at or after the start of critical care, in England, Wales and Northern Ireland. Of these, early data covering the first 24 hours of critical care have been submitted to ICNARC for 11,370 admissions for 9347 patients (Figure 1, Figure 2 and Figure 3). Of the 9347 patients, 8062 have outcomes reported and 1285 patients were last reported as still receiving critical care (Figure 4). The largest numbers of patients (2780) have been managed by the three London Operational Delivery Networks (Figure 5). Please note that Figure 2, Figure 3 and Figure 4 are affected by a variable lag time for submission of data of about 1-3 days (shaded grey).

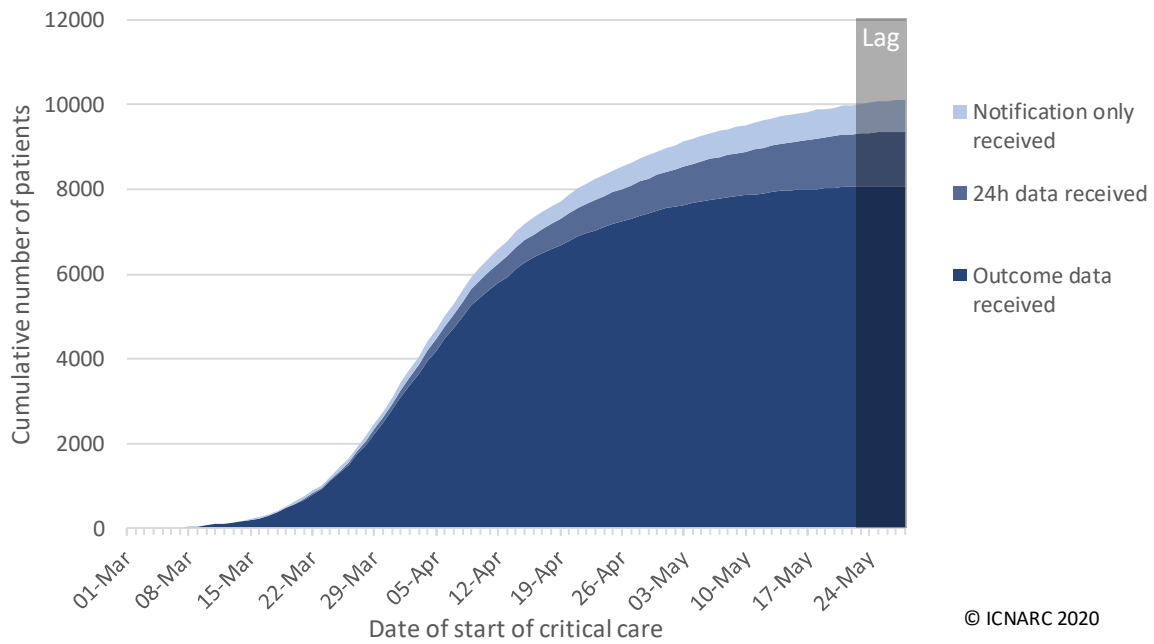


**Figure 1 Numbers of patients with data included in this report and outstanding \***

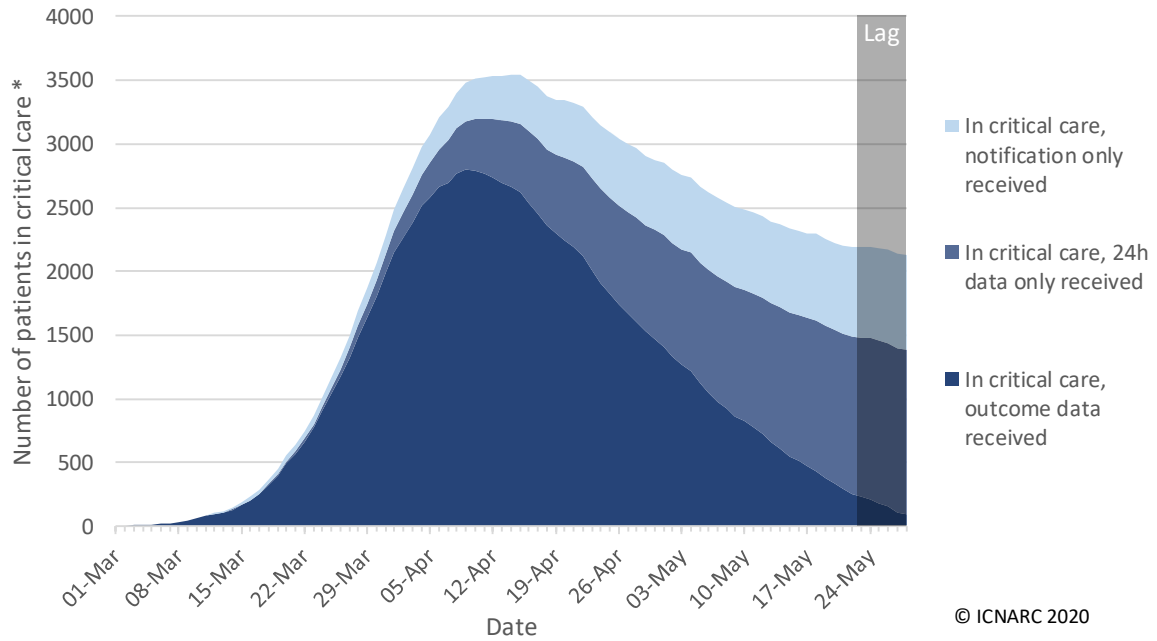
\* Please note that 24-hour data are considered outstanding where ICNARC was notified of the admission at least 48 hours previously and outcome data are considered outstanding when at least 10 days have elapsed since the start of critical care.



**Figure 2** Number of new patients critically ill with confirmed COVID-19 by date of start of critical care

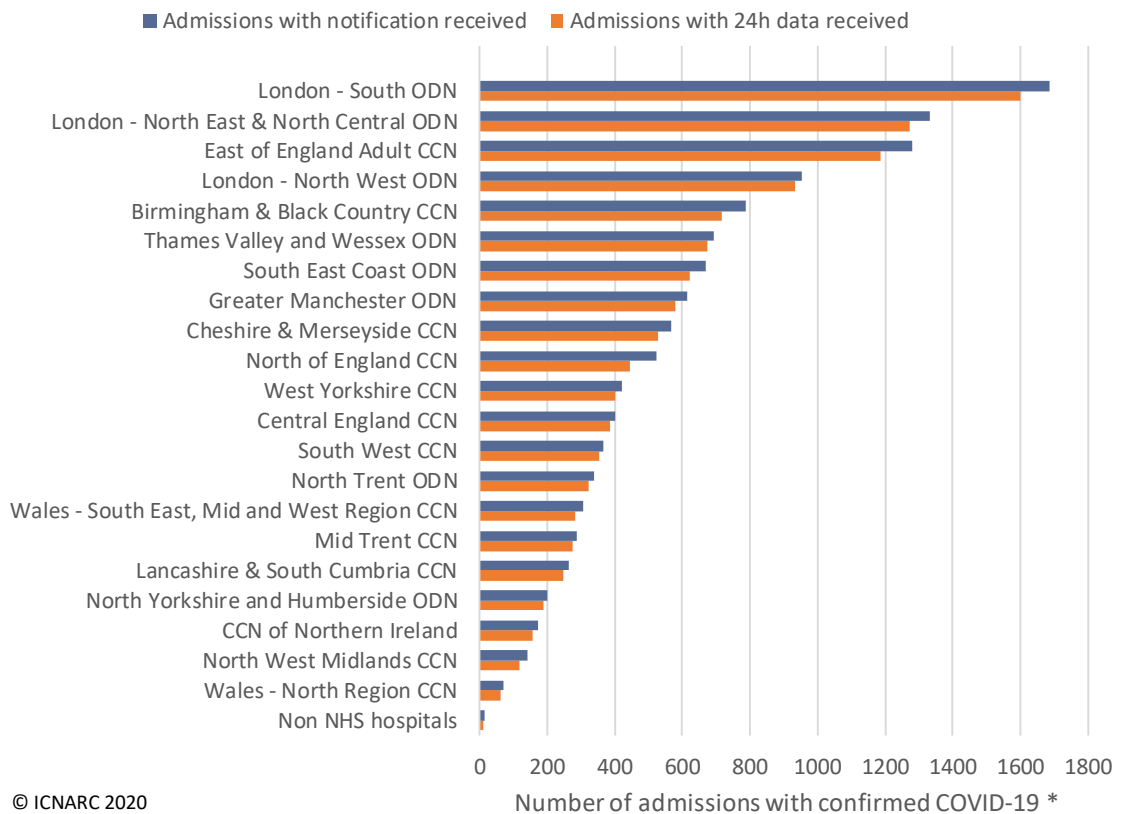


**Figure 3** Cumulative number of patients critically ill with confirmed COVID-19 by date of start of critical care



**Figure 4 Total number of patients critically ill with confirmed COVID-19 by date \***

\* Please note that patients whose outcome data have not been received are assumed to remain in critical care as of 28 May 2020.



**Figure 5 Number of admissions critically ill with confirmed COVID-19 by Critical Care Network \***

ODN: Organisational Delivery Network; CCN: Critical Care Network. \* Please note that this figure represents the number of admissions (i.e. includes transfers between units and readmissions) and NOT the number of patients.

## Patient characteristics

Characteristics of patients critically ill with confirmed COVID-19 are summarised in Table 1 and Table 2 and compared with an historic cohort of patients critically ill with viral pneumonia (non-COVID-19) admitted between 1 January 2017 and 31 December 2019.

**Table 1 Patient characteristics: demographics**

Demographics	Patients with confirmed COVID-19 and 24h data (N=9347)	Patients with viral pneumonia (non-COVID-19), 2017-19 (N=5782)
Age at admission (years) [N=9343]		
Mean (SD)	58.7 (12.6)	58.0 (17.4)
Median (IQR)	60 (51, 68)	61 (48, 71)
Sex, n (%) [N=9343]		
Female	2722 (29.1)	2641 (45.7)
Male	6621 (70.9)	3141 (54.3)
Currently or recently pregnant, n (% of females aged 16-49) [N=650]		
Currently pregnant	23 (3.5)	56 (7.4)
Recently pregnant (within 6 weeks)	34 (5.2)	29 (3.8)
Not known to be pregnant	593 (91.2)	674 (88.8)
Ethnicity, n (%) [N=8496]		
White	5690 (67.0)	4951 (88.4)
Mixed	145 (1.7)	52 (0.9)
Asian	1275 (15.0)	325 (5.8)
Black	831 (9.8)	155 (2.8)
Other	555 (6.5)	117 (2.1)
Index of Multiple Deprivation (IMD) quintile *, n (%) [N=9169]		
1 (least deprived)	1353 (14.8)	873 (15.3)
2	1488 (16.2)	999 (17.5)
3	1793 (19.6)	1115 (19.5)
4	2253 (24.6)	1232 (21.6)
5 (most deprived)	2282 (24.9)	1489 (26.1)
Body mass index *, n (%) [N=8638]		
<18.5	59 (0.7)	310 (5.5)
18.5-<25	2190 (25.4)	1933 (34.2)
25-<30	3017 (34.9)	1691 (29.9)
30-<40	2704 (31.3)	1330 (23.5)
40+	668 (7.7)	394 (7.0)

\* Please see Definitions on page 34.

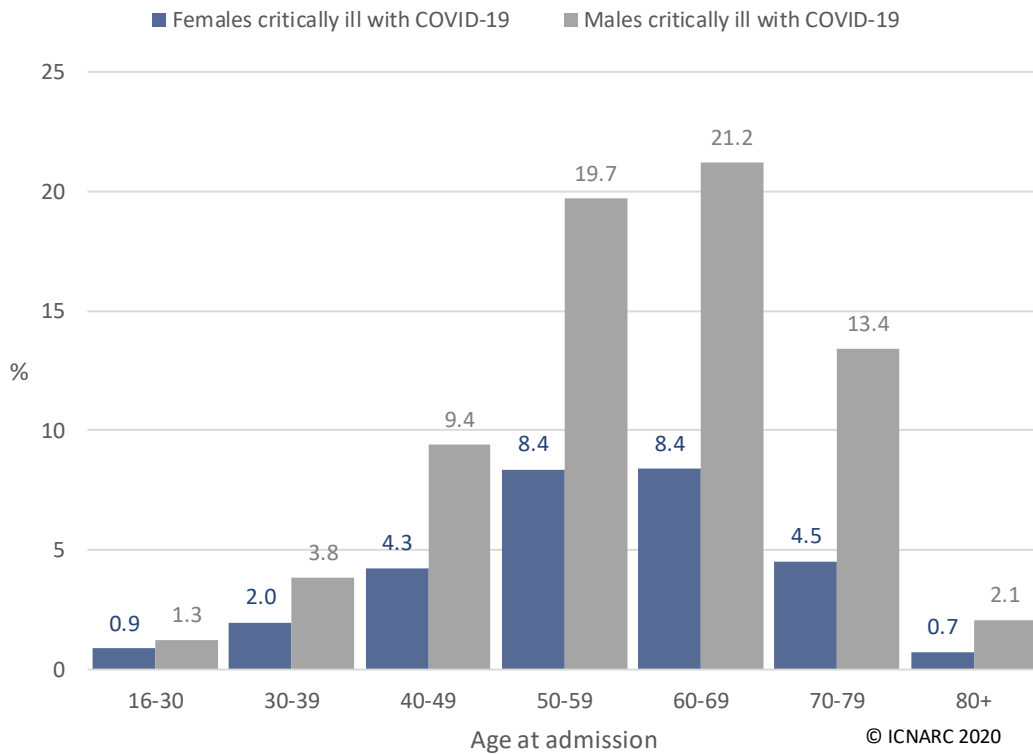
**Table 2 Patient characteristics: medical history and indicators of acute severity \***

Medical history	Patients with confirmed COVID-19 and 24h data (N=9347)	Patients with viral pneumonia (non-COVID-19), 2017-19 (N=5782)
Dependency prior to admission to acute hospital, n (%) [N=9034]		
Able to live without assistance in daily activities	8201 (90.8)	4244 (73.6)
Some assistance with daily activities	802 (8.9)	1392 (24.1)
Total assistance with all daily activities	31 (0.3)	134 (2.3)
Very severe comorbidities *, n (%) [N=9109]		
Cardiovascular	58 (0.6)	78 (1.4)
Respiratory	97 (1.1)	295 (5.1)
Renal	153 (1.7)	120 (2.1)
Liver	34 (0.4)	54 (0.9)
Metastatic disease	42 (0.5)	68 (1.2)
Haematological malignancy	160 (1.8)	268 (4.6)
Immunocompromise	313 (3.4)	503 (8.7)
Prior hospital length of stay [N=9329]		
Mean (SD)	2.4 (6.7)	2.7 (13.0)
Median (IQR)	1 (0, 3)	1 (0, 2)
CPR within previous 24h, n (%) [N=9269]		
In the community	42 (0.5)	21 (0.4)
In hospital	55 (0.6)	85 (1.5)
<b>Indicator of acute severity</b>		
Mechanically ventilated within first 24h *, n (%) [N=8818]	5437 (61.7)	2482 (43.0)
APACHE II Score [N=9008]		
Mean (SD)	14.8 (5.3)	17.2 (6.3)
Median (IQR)	14 (11, 18)	17 (13, 21)
PaO <sub>2</sub> /FiO <sub>2</sub> ratio † (kPa), median (IQR) [N=8417]	15.8 (11.3, 22.0)	18.0 (11.6, 26.4)
PaO <sub>2</sub> /FiO <sub>2</sub> ratio †, n (%) [N=8417]		
≤ 13.3 kPa (≤ 100 mmHg)	3103 (36.9)	1819 (33.3)
> 13.3 and ≤ 26.7 kPa (> 100 and ≤ 200 mmHg)	4090 (48.6)	2318 (42.4)
> 26.7 kPa (> 200 mmHg)	1224 (14.5)	1328 (24.3)

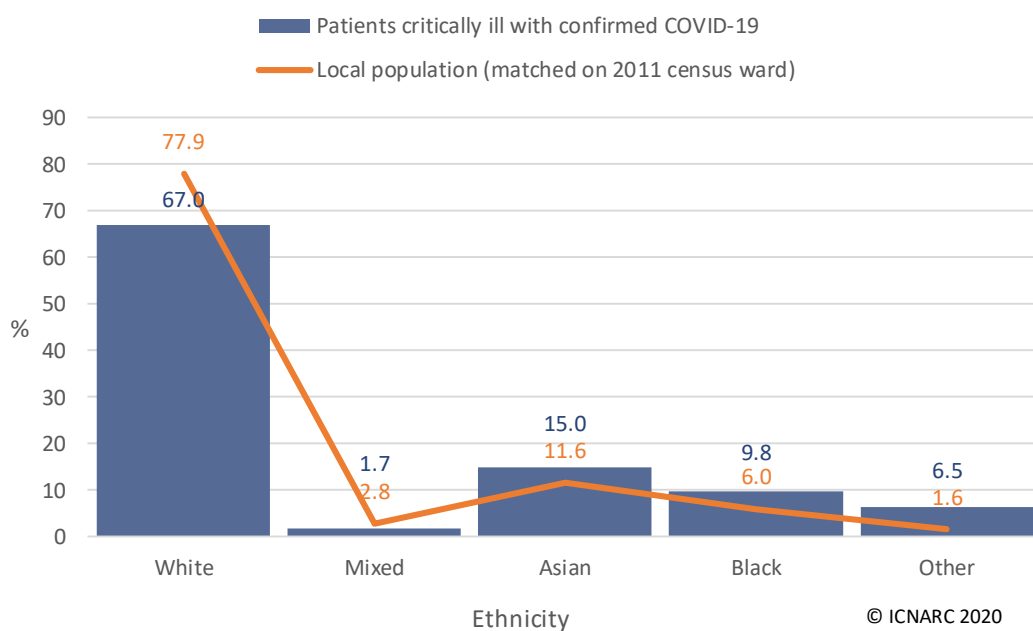
\* Please see Definitions on page 34. Indicators of acute severity are based on data from the first 24 hours of critical care. † Derived from the arterial blood gas with the lowest PaO<sub>2</sub> during the first 24 hours of critical care.



The distribution of age and sex is presented in Figure 6. The distribution of ethnicity, matched on 2011 census ward for location of patients critically ill with COVID-19, is presented in Figure 7.

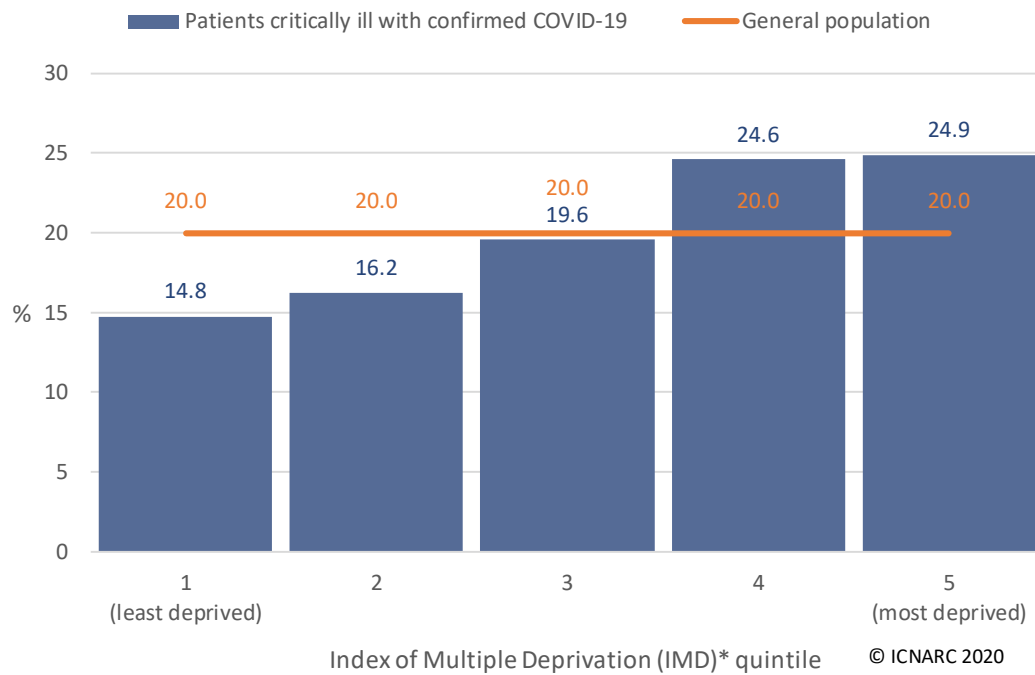


**Figure 6 Age and sex distribution of patients critically ill with confirmed COVID-19**



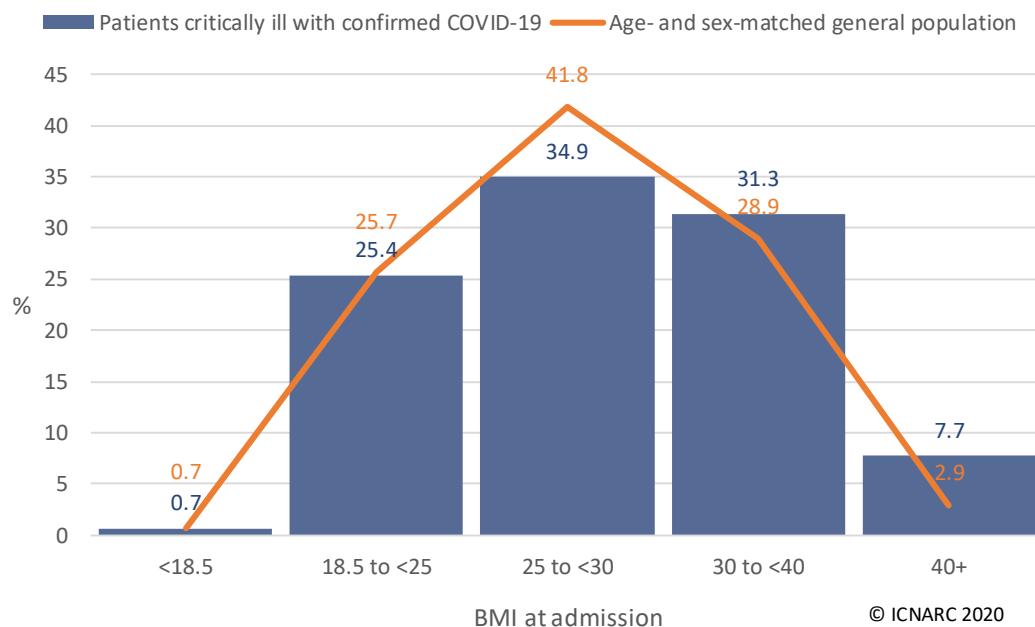
**Figure 7 Ethnicity distribution of patients critically ill with confirmed COVID-19**

The distribution of Index of Multiple Deprivation (IMD) is presented in Figure 8. The distribution of body mass index (BMI), compared with an age- and sex-matched population (from the Health Survey for England 2018), is presented in Figure 9.



**Figure 8 Index of Multiple Deprivation (IMD) \* distribution of patients critically ill with confirmed COVID-19**

\* Please see Definitions on page 34.



**Figure 9 BMI distribution of patients critically ill with confirmed COVID-19**

## Patient characteristics by ethnicity

Characteristics of patients critically ill with confirmed COVID-19 by ethnicity, for patients of white ethnicities compared with patients of all non-white ethnicities combined (mixed, Asian, black or other), are summarised in Table 3 and Table 4.

**Table 3 Patient characteristics: demographics by ethnicity**

Demographics	Patients of white ethnicity (N=5690)	Patients of non-white ethnicity (N=2806)
Age at admission (years) [N=5688]		
Mean (SD)	60.6 (12.4)	55.6 (12.3)
Median (IQR)	61 (53, 70)	57 (48, 64)
Sex, n (%) [N=5689]		
Female	1667 (29.3)	845 (30.1)
Male	4022 (70.7)	1960 (69.9)
Currently or recently pregnant, n (% of females) [N=343]		
Currently pregnant	11 (3.2)	11 (4.2)
Recently pregnant (within 6 weeks)	13 (3.8)	20 (7.5)
Not known to be pregnant	319 (93.0)	234 (88.3)
2019 Index of Multiple Deprivation (IMD) Quintile		
1 (least deprived)	1016 (18.2)	223 (8.1)
2	1040 (18.6)	316 (11.5)
3	1130 (20.2)	503 (18.3)
4	1184 (21.2)	850 (30.9)
5 (most deprived)	1227 (21.9)	863 (31.3)
Body mass index, n (%) [N=5272]		
<18.5	34 (0.6)	23 (0.9)
18.5-<25	1199 (22.7)	776 (29.7)
25-<30	1790 (34.0)	954 (36.5)
30-<40	1766 (33.5)	724 (27.7)
40+	483 (9.2)	137 (5.2)

\* Please see Definitions on page 34. Patients with ethnicity recorded as 'not stated' excluded.

**Table 4 Patient characteristics: medical history and indicators of acute severity by ethnicity**

Medical history	Patients of white ethnicity (N=5690)	Patients of non-white ethnicity (N=2806)
Dependency prior to admission to acute hospital, n (%) [N=8274]		
Able to live without assistance in daily activities	4945 (89.3)	2556 (93.5)
Some assistance with daily activities	575 (10.4)	168 (6.1)
Total assistance with all daily activities	20 (0.4)	10 (0.4)
Very severe comorbidities*, n (%) [N=8332]		
Cardiovascular	45 (0.8)	9 (0.3)
Respiratory	73 (1.3)	18 (0.7)
Renal	65 (1.2)	79 (2.9)
Liver	25 (0.4)	6 (0.2)
Metastatic disease	34 (0.6)	7 (0.3)
Haematological malignancy	121 (2.2)	28 (1.0)
Immunocompromise	223 (4.0)	69 (2.5)
Prior hospital length of stay [N=8484]		
Mean (SD)	2.5 (6.9)	2.2 (6.8)
Median (IQR)	1 (0, 3)	1 (0, 3)
CPR within previous 24h, n (%) [N=5658]		
In the community	27 (0.5)	12 (0.2)
In hospital	30 (0.5)	17 (0.3)
<b>Indicator of acute severity</b>		
Mechanically ventilated within first 24h*, n (%) [N=8046]	3126 (57.8)	1813 (68.8)
APACHE II Score [N=8219]		
Mean (SD)	15.0 (5.3)	14.7 (5.4)
Median (IQR)	15 (11, 18)	14 (11, 18)
PaO <sub>2</sub> /FiO <sub>2</sub> ratio† (kPa), median (IQR) [N=7675]	16.0 (11.3, 22.0)	15.4 (11.3, 21.8)
PaO <sub>2</sub> /FiO <sub>2</sub> ratio†, n (%) [N=7675]		
≤ 13.3 kPa (≤ 100 mmHg)	1872 (36.5)	936 (36.8)
> 13.3 and ≤ 26.7 kPa (> 100 and ≤ 200 mmHg)	2497 (48.6)	1250 (49.2)
> 26.7 kPa (> 200 mmHg)	764 (14.9)	356 (14.0)

\* Please see Definitions on page 34. Patients with ethnicity recorded as 'not stated' excluded. Indicators of acute severity are based on data from the first 24 hours of critical care. † Derived from the arterial blood gas with the lowest PaO<sub>2</sub> from the first 24 hours of critical care.

## Patient characteristics by receipt of organ support

Characteristics of patients critically ill with confirmed COVID-19 who received advanced respiratory support at any point during critical care and those who received basic respiratory support only are summarised in Table 5 and Table 6. Characteristics of patients critically ill with confirmed COVID-19 who received renal support at any point during critical care and those who did not receive renal support are summarised in Table 7 and Table 8. Most patients who received renal support (95.4%) also received advanced respiratory support.

**Table 5 Patient characteristics: demographics by receipt of respiratory support \***

Demographics	Patients receiving advanced respiratory support (N=5761)	Patients receiving only basic respiratory support (N=2026)
Age at admission (years) [N=7786]		
Mean (SD)	58.9 (12.0)	59.2 (14.3)
Median (IQR)	60 (52, 68)	60 (50, 70)
Sex, n (%) [N=7785]		
Female	1598 (27.7)	663 (32.7)
Male	4161 (72.3)	1363 (67.3)
Currently or recently pregnant, n (% of females aged 16-49) [N=545]		
Currently pregnant	10 (2.7)	8 (4.7)
Recently pregnant (within 6 weeks)	20 (5.3)	9 (5.3)
Not known to be pregnant	345 (92.0)	153 (90.0)
Ethnicity, n (%) [N=7125]		
White	3393 (64.8)	1441 (76.2)
Mixed	82 (1.6)	27 (1.4)
Asian	826 (15.8)	221 (11.7)
Black	564 (10.8)	112 (5.9)
Other	368 (7.0)	91 (4.8)
Index of Multiple Deprivation (IMD) quintile *, n (%) [N=7648]		
1 (least deprived)	814 (14.4)	336 (16.9)
2	904 (16.0)	343 (17.3)
3	1092 (19.3)	359 (18.1)
4	1436 (25.3)	432 (21.8)
5 (most deprived)	1419 (25.0)	513 (25.9)
Body mass index *, n (%) [N=7273]		
<18.5	28 (0.5)	16 (0.9)
18.5-<25	1317 (24.1)	462 (25.6)
25-<30	1977 (36.2)	620 (34.3)
30-<40	1742 (31.9)	537 (29.7)
40+	402 (7.4)	172 (9.5)

\* Please see Definitions on page 34. Patients receiving no respiratory support excluded due to small numbers.

**Table 6 Patient characteristics: medical history and indicators of acute severity by receipt of respiratory support \***

Medical history	Patients receiving advanced respiratory support (N=5761)	Patients receiving only basic respiratory support (N=2026)
Dependency prior to admission to acute hospital, n (%) [N=7638]		
Able to live without assistance in daily activities	5248 (92.8)	1686 (85.0)
Some assistance with daily activities	398 (7.0)	281 (14.2)
Total assistance with all daily activities	9 (0.2)	16 (0.8)
Very severe comorbidities *, n (%) [N=7673]		
Cardiovascular	17 (0.3)	30 (1.5)
Respiratory	37 (0.7)	53 (2.7)
Renal	65 (1.1)	55 (2.8)
Liver	16 (0.3)	14 (0.7)
Metastatic disease	17 (0.3)	14 (0.7)
Haematological malignancy	77 (1.4)	53 (2.7)
Immunocompromise	171 (3.0)	95 (4.8)
Prior hospital length of stay [N=7782]		
Mean (SD)	2.1 (6.4)	2.8 (7.5)
Median (IQR)	1 (0, 3)	1 (0, 3)
CPR within previous 24h, n (%) [N=7775]		
In the community	33 (0.4)	4 (0.2)
In hospital	49 (0.5)	2 (0.1)
<b>Indicator of acute severity</b>		
Mechanically ventilated within first 24h *, n (%) [N=7524]	4536 (81.6)	---
APACHE II Score [N=7611]		
Mean (SD)	15.2 (5.1)	13.9 (5.4)
Median (IQR)	15 (12, 18)	13 (10, 17)
PaO <sub>2</sub> /FiO <sub>2</sub> ratio † (kPa), median (IQR) [N=7199]	15.3 (10.9, 21.3)	17.8 (12.7, 24.0)
PaO <sub>2</sub> /FiO <sub>2</sub> ratio †, n(%) [N=7199]		
≤ 13.3 kPa (≤ 100 mmHg)	2162 (39.4)	489 (28.7)
> 13.3 and ≤ 26.7 kPa (> 100 and ≤ 200 mmHg)	2623 (47.7)	912 (53.5)
> 26.7 kPa (> 200 mmHg)	709 (12.9)	304 (17.8)

\* Please see Definitions on page 34. Patients receiving no respiratory support excluded due to small numbers. Indicators of acute severity are based on data from the first 24 hours of critical care. † Derived from the arterial blood gas with the lowest PaO<sub>2</sub> from the first 24 hours of critical care.

**Table 7 Patient characteristics: demographics by receipt of renal support \***

Demographics	Patients receiving any renal support (N=2011)	Patients not receiving any renal support (N=5961)
Age at admission (years) [N=7972]		
Mean (SD)	59.6 (11.1)	58.8 (13.3)
Median (IQR)	60 (53, 68)	60 (51, 69)
Sex, n (%) [N=7970]		
Female	443 (22.0)	1894 (31.8)
Male	1567 (78.0)	4066 (68.2)
Currently or recently pregnant, n (% of females aged 16-49) [N=562]		
Currently pregnant	2 (2.0)	19 (4.1)
Recently pregnant (within 6 weeks)	3 (2.9)	29 (6.3)
Not known to be pregnant	97 (95.1)	412 (89.6)
Ethnicity, n (%) [N=7295]		
White	1113 (60.7)	3838 (70.3)
Mixed	21 (1.1)	91 (1.7)
Asian	304 (16.6)	768 (14.1)
Black	279 (15.2)	413 (7.6)
Other	118 (6.4)	350 (6.4)
Index of Multiple Deprivation (IMD) quintile *, n (%) [N=7825]		
1 (least deprived)	270 (13.6)	902 (15.4)
2	295 (14.9)	982 (16.8)
3	387 (19.5)	1092 (18.7)
4	514 (25.9)	1404 (24.0)
5 (most deprived)	515 (26.0)	1464 (25.1)
Body mass index *, n (%) [N=7440]		
<18.5	11 (0.6)	37 (0.7)
18.5-<25	426 (22.0)	1416 (25.7)
25-<30	676 (35.0)	1970 (35.8)
30-<40	671 (34.7)	1650 (30.0)
40+	149 (7.7)	434 (7.9)

\* Please see Definitions on page 34. Includes 132 patients requiring chronic renal replacement therapy for end stage renal disease prior to critical care; outcomes for these patients are similar.

**Table 8 Patient characteristics: medical history and indicators of acute severity by receipt of renal support \***

Medical history	Patients receiving any renal support (N=2011)	Patients not receiving any renal support (N=5961)
Dependency prior to admission to acute hospital, n (%) [N=7816]		
Able to live without assistance in daily activities	1843 (92.8)	5233 (89.7)
Some assistance with daily activities	137 (6.9)	572 (9.8)
Total assistance with all daily activities	5 (0.3)	26 (0.4)
Very severe comorbidities *, n (%) [N=7851]		
Cardiovascular	8 (0.4)	42 (0.7)
Respiratory	14 (0.7)	78 (1.3)
Renal	100 (5.0)	32 (0.5)
Liver	2 (0.1)	28 (0.5)
Metastatic disease	9 (0.5)	27 (0.5)
Haematological malignancy	25 (1.3)	109 (1.9)
Immunocompromise	66 (3.3)	211 (3.6)
Prior hospital length of stay [N=7967]		
Mean (SD)	2.0 (4.3)	2.5 (7.5)
Median (IQR)	1 (0, 3)	1 (0, 3)
CPR within previous 24h, n (%) [N=7959]		
In the community	11 (0.2)	26 (0.5)
In hospital	12 (0.2)	41 (0.7)
<b>Indicator of acute severity</b>		
Mechanically ventilated within first 24h *, n (%) [N=7688]	1561 (79.7)	3131 (54.6)
APACHE II Score [N=7786]		
Mean (SD)	16.8 (5.5)	14.2 (5.0)
Median (IQR)	16 (13, 20)	14 (11, 17)
PaO <sub>2</sub> /FiO <sub>2</sub> ratio † (kPa), median (IQR) [N=7325]	14.4 (10.5, 20.2)	16.6 (11.7, 23.0)
PaO <sub>2</sub> /FiO <sub>2</sub> ratio †, n(%) [N=7325]		
≤ 13.3 kPa (≤ 100 mmHg)	846 (43.9)	1811 (33.5)
> 13.3 and ≤ 26.7 kPa (> 100 and ≤ 200 mmHg)	874 (45.4)	2686 (49.8)
> 26.7 kPa (> 200 mmHg)	207 (10.7)	901 (16.7)

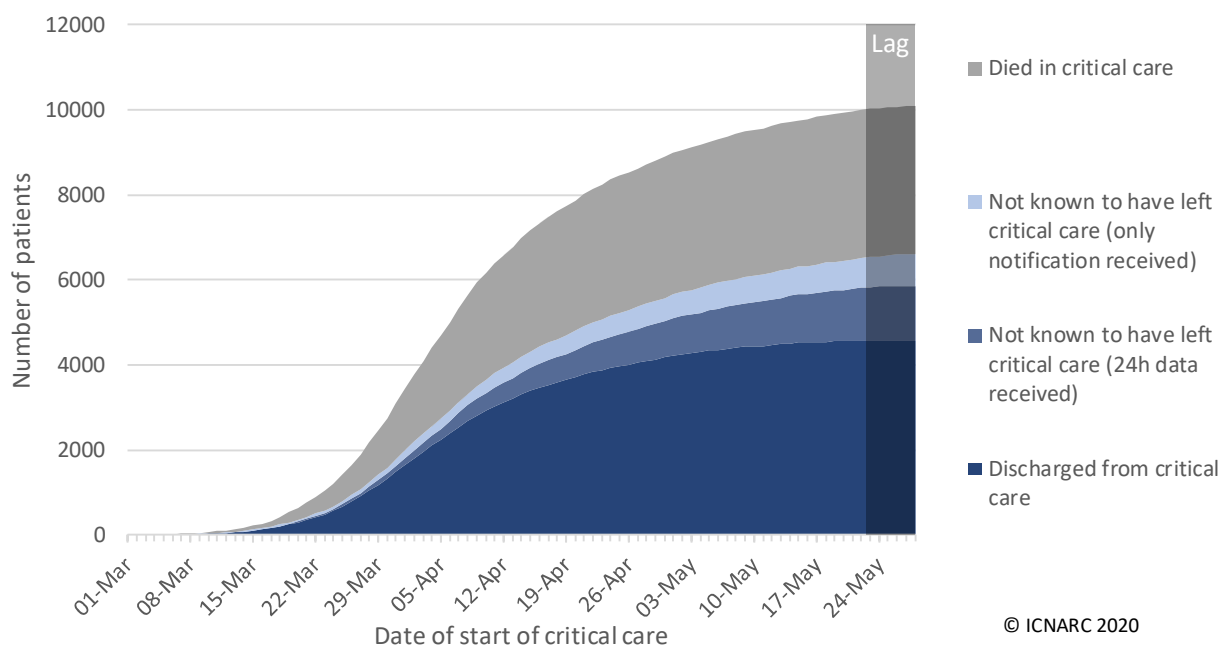
\* Please see Definitions on page 34. Includes 132 patients requiring chronic renal replacement therapy for end stage renal disease prior to critical care; outcomes for these patients are similar. Indicators of acute severity are based on data from the first 24 hours of critical care. † Derived from the arterial blood gas with the lowest PaO<sub>2</sub> from the first 24 hours of critical care.



## Outcomes, length of stay and organ support

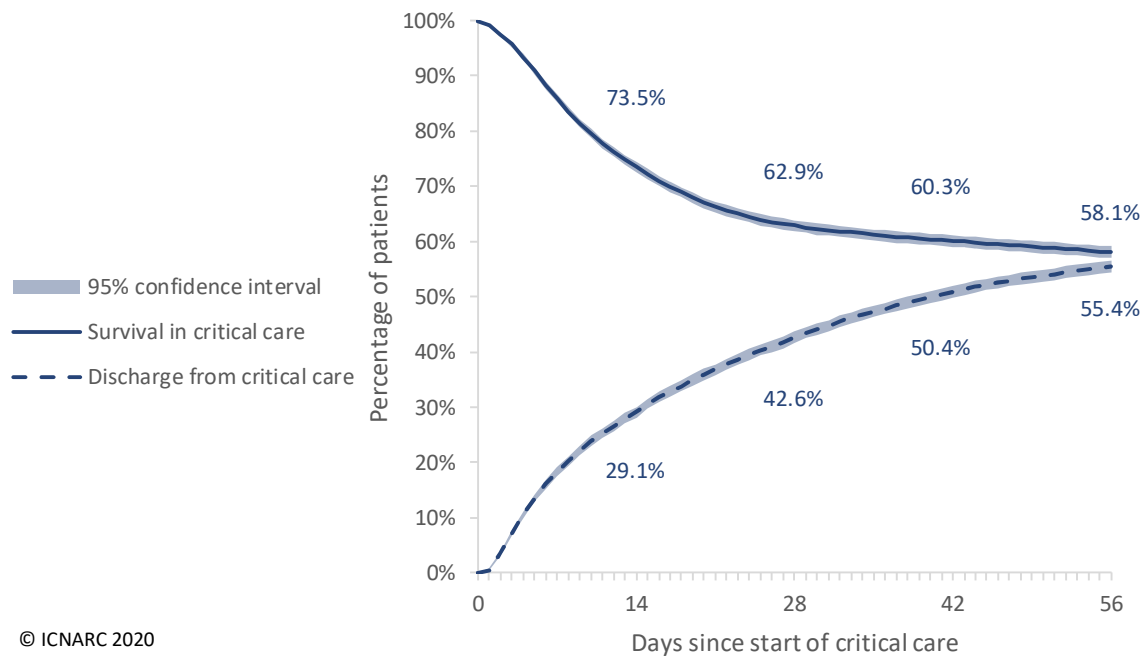
Critical care outcomes have been received for 8062 (of 9347) patients, of whom 3483 patients have died and 4579 have been discharged alive from critical care (Figure 10 and Figure 11). Length of stay in critical care and duration of organ support in critical care are summarised in Table 9 and compared with an historic cohort of patients critically ill with viral pneumonia (non-COVID-19) admitted between 1 January 2017 and 31 December 2019. Receipt and duration of organ support are summarised graphically in Figure 12 and in Figure 13, respectively.

Please note that Figure 11 is biased towards longer lengths of stay in critical care due to the time lag in notification of a patients' discharge or death, while Table 9, Figure 12 and Figure 13 are biased towards patients with shorter lengths of stay in critical care due to the emerging nature of the UK epidemic. Figure 10 and Figure 11 assume that patients are still in critical care unless ICNARC has been notified otherwise, and Table 9, Figure 12 and Figure 13 include only those patients who have either died or been discharged from critical care.



**Figure 10 Cumulative outcomes by date of start of critical care \***

\* Please note that patients whose outcome data have not been received are assumed to remain in critical care as of 28 May 2020.



Died while receiving critical care	0	2403	3270	3413	3434
Still receiving critical care	9270	4019	1789	788	224
Discharged from critical care	0	2639	3757	4353	4538
Censored	0	209	454	716	1074

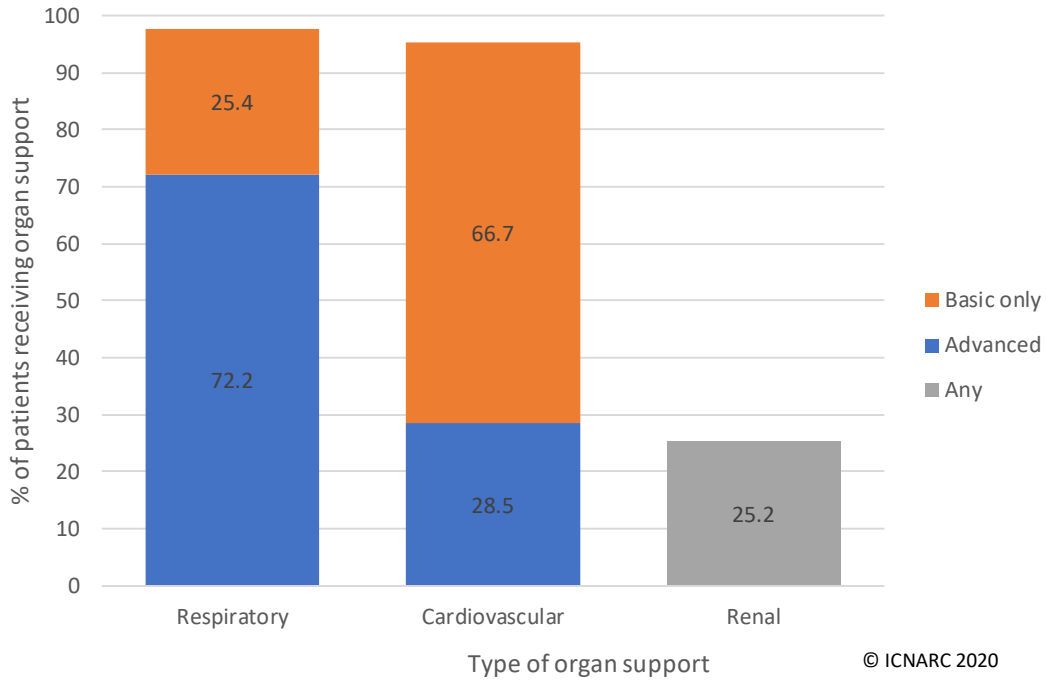
**Figure 11 Survival and discharge among patients with at least 24h data received**

Please note that due to the time lag in notification of patients' discharge or death, this figure is expected to be biased towards *longer* lengths of stay in critical care. Patients who are still in critical care are included only for the period in which they are known to have been in critical care, i.e. from their date of admission until 28 May 2020. Due to the emerging nature of the UK epidemic, the total number of patients available for reporting becomes smaller at longer lengths of follow-up. Compared with the survival statistics presented in Table 9, Table 13 and Table 14, this approach makes better use of all available data, including data about patients who are still in critical care.

**Table 9 Outcome, length of stay and organ support \***

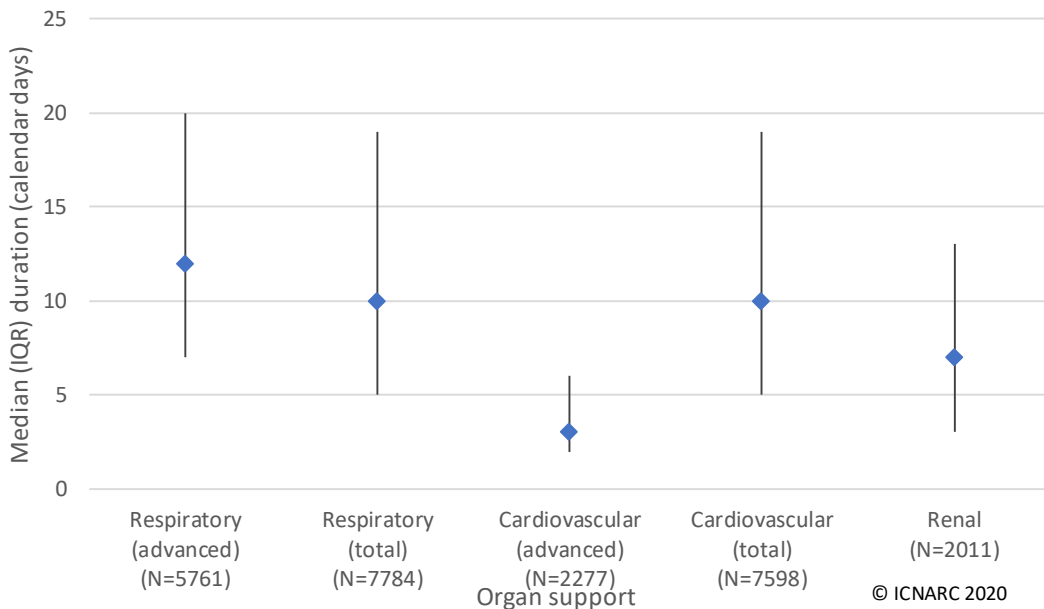
Critical care outcomes among patients who have been discharged or died	Patients with COVID-19 and outcome reported (N=8062)	Patients with viral pneumonia (non-COVID-19), 2017-19 (N=5626)
Outcome at end of critical care, n (%)		
Discharged	4579 (56.8)	4423 (78.6)
Died	3483 (43.2)	1203 (21.4)
<b>Length of stay</b>		
Length of stay in critical care (days), median (IQR)		
Survivors	11 (4, 22)	6 (3, 13)
Non-survivors	9 (5, 15)	6 (3, 13)
<b>Organ support (Critical Care Minimum Dataset) *</b>		
Receipt of organ support, at any point, n (%)		
Advanced respiratory support	5761 (72.2)	2721 (48.4)
Basic respiratory support	5148 (64.4)	4527 (80.5)
Advanced cardiovascular support	2277 (28.5)	1261 (22.4)
Basic cardiovascular support	7385 (92.4)	5219 (92.8)
Renal support	2011 (25.2)	957 (17.0)
Liver support	68 (0.9)	53 (0.9)
Neurological support	605 (7.6)	320 (5.7)
Combinations of advanced respiratory, advanced cardiovascular and renal support, n (%):		
Advanced respiratory support only	2613 (32.4)	1257 (22.3)
Advanced cardiovascular support only	26 (0.3)	79 (1.4)
Renal support only	84 (1.0)	116 (2.1)
Advanced respiratory and advanced cardiovascular support only	1219 (15.1)	640 (11.4)
Advanced respiratory and renal support only	906 (11.2)	299 (5.3)
Advanced cardiovascular and renal support only	9 (0.1)	17 (0.3)
Advanced respiratory, advanced cardiovascular and renal support	1023 (12.7)	525 (9.3)
Duration of organ support (calendar days), median (IQR)		
Advanced respiratory support	12 (7, 20)	9 (4, 17)
Total (advanced + basic) respiratory support	10 (5, 19)	6 (3, 12)
Advanced cardiovascular support	3 (2, 6)	3 (2, 5)
Total (advanced + basic) cardiovascular support	10 (5, 19)	6 (3, 12)
Renal support	7 (3, 13)	6 (3, 12)

Please note that owing to the emerging nature of the epidemic, the sample of patients with confirmed COVID-19 represented in this table is biased towards patients with *shorter* lengths of stay in critical care prior to discharge or death, i.e. those who died or recovered quickly. This does not apply to the comparison patients with viral pneumonia (non-COVID-19), 2017-19. \* Please see Definitions on page 34.



**Figure 12 Percentage of patients receiving organ support \***

Please note that owing to the emerging nature of the epidemic, the sample of patients with confirmed COVID-19 represented in this table is biased towards patients with *shorter* lengths of stay in critical care prior to discharge or death, i.e. patients who died or recovered quickly. \* Please see Definitions on page 34.



**Figure 13 Duration of organ support received \***

This Figure presents median and interquartile range, in calendar days. Please note that owing to the emerging nature of the epidemic, the sample of patients with confirmed COVID-19 represented in this table is biased towards patients with *shorter* lengths of stay in critical care prior to discharge or death, i.e. patients who died or recovered quickly. \* Please see Definitions on page 34.

## Outcomes by patient characteristics

Critical care outcomes for patients critically ill with confirmed COVID-19 across major patient subgroups are summarised in Table 10 and compared with an historic cohort of patients critically ill with viral pneumonia (non-COVID-19) admitted between 1 January 2017 and 31 December 2019.

**Table 10 Outcome by patient characteristics**

Patient characteristic	Patients with COVID-19 and outcome reported (N=8062)		Patients with viral pneumonia (non-COVID-19), 2017-19 (N=5782)
	Discharged alive from critical care	Died in critical care	Died in critical care
	n (%)	n (%)	(%)
Age at admission (years)			
16-39	529 (83.3)	106 (16.7)	(7.1)
40-49	833 (76.6)	254 (23.4)	(12.1)
50-59	1400 (63.1)	819 (36.9)	(19.1)
60-69	1163 (49.3)	1198 (50.7)	(25.7)
70-79	555 (36.9)	948 (63.1)	(31.2)
80+	98 (38.3)	158 (61.7)	(30.8)
Sex			
Female	1474 (62.3)	891 (37.7)	(19.1)
Male	3105 (54.5)	2590 (45.5)	(23.3)
Ethnicity			
White	2897 (58.0)	2102 (42.0)	(21.7)
Mixed	58 (51.8)	54 (48.2)	(14.0)
Asian	552 (50.9)	533 (49.1)	(19.4)
Black	370 (53.0)	328 (47.0)	(12.4)
Other	295 (62.4)	178 (37.6)	(18.6)
Index of Multiple Deprivation (IMD) quintile *			
1 (least deprived)	703 (59.0)	489 (41.0)	(22.3)
2	741 (57.3)	553 (42.7)	(22.6)
3	850 (56.6)	652 (43.4)	(22.5)
4	1056 (54.7)	875 (45.3)	(20.1)
5 (most deprived)	1125 (56.4)	868 (43.6)	(20.3)
Body mass index			
<25	1086 (56.5)	836 (43.5)	(23.1)
25-<30	1442 (54.0)	1228 (46.0)	(22.5)
30-<40	1411 (60.3)	930 (39.7)	(18.9)
40+	362 (61.6)	226 (38.4)	(13.6)
Assistance required with daily activities			
No	4131 (57.8)	3016 (42.2)	(19.4)
Yes	359 (48.3)	385 (51.7)	(27.2)
Any very severe comorbidities *			
No	4223 (57.8)	3084 (42.2)	(18.8)
Yes	292 (46.6)	334 (53.4)	(32.8)

Please note that owing to the emerging nature of the epidemic, the sample of patients with COVID-19 represented in this table is biased towards patients with *shorter* lengths of stay in critical care prior to discharge or death (i.e. those who died or recovered quickly). This does not apply to the comparison patients with viral pneumonia (non-COVID-19), 2017-19. \* Please see Definitions on page 34.

Critical care outcomes for patients of white ethnicities compared with patients of non-white ethnicities are summarised in Table 11.

**Table 11 Outcome, length of stay and organ support by ethnicity**

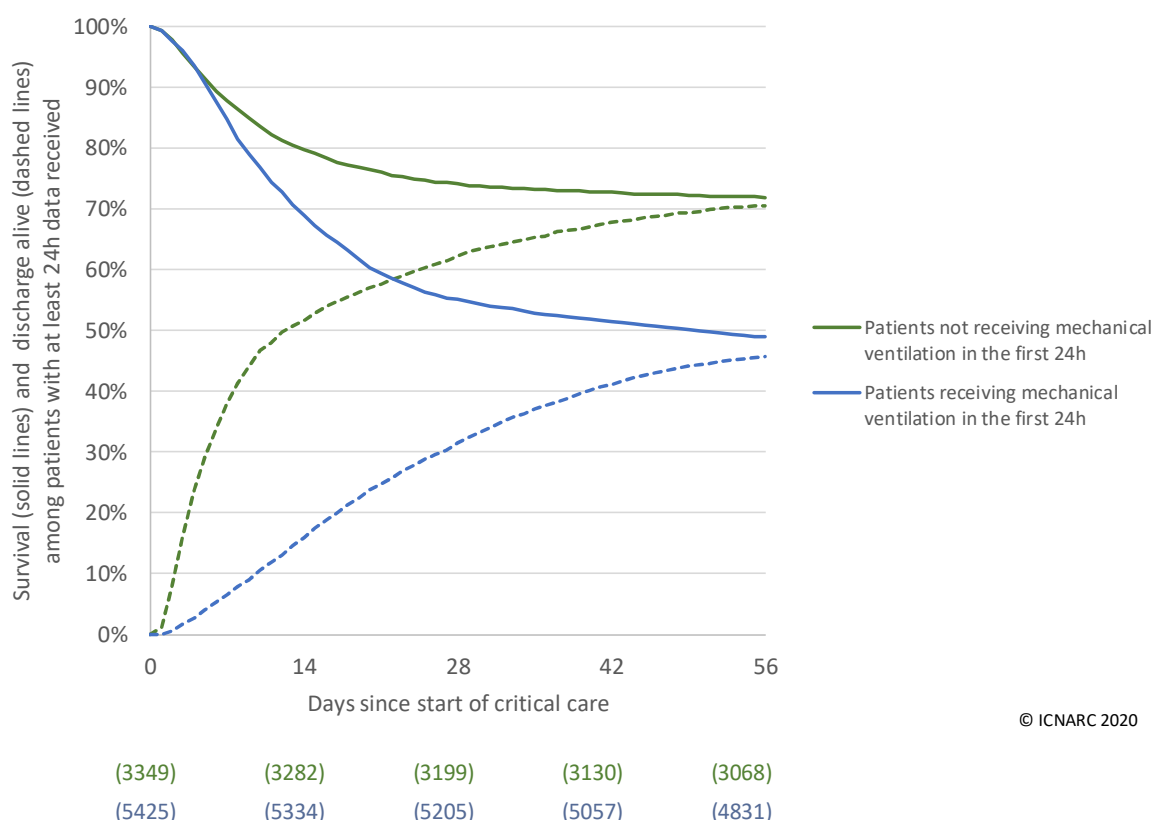
Critical care unit outcomes among patients who have been discharged or died	Patients of white ethnicity (N=4999)	Patients of non-white ethnicity (N=2368)
Outcome at end of critical care, n (%)		
Alive	2897 (58.0)	1275 (53.8)
Dead	2102 (42.0)	1093 (46.2)
<b>Length of stay</b>		
Length of stay in critical care (days), median (IQR)		
Survivors	9 (4, 21)	13 (5, 25)
Non-survivors	8 (4, 15)	9 (5, 16)
<b>Organ support (Critical Care Minimum Dataset)*</b>		
Receipt of organ support, at any point, n (%)		
Advanced respiratory support	3393 (68.5)	1840 (78.4)
Basic respiratory support	3300 (66.5)	1425 (60.7)
Advanced cardiovascular support	1339 (27.0)	715 (30.5)
Basic cardiovascular support	4547 (91.6)	2206 (94.0)
Renal support	1113 (22.5)	722 (30.8)
Liver support	23 (0.5)	29 (1.2)
Neurological support	391 (7.9)	171 (7.3)
Duration of organ support (calendar days), median (IQR)		
Advanced respiratory support	12 (6, 19)	13 (7, 20)
Total (advanced + basic) respiratory support	9 (5, 18)	11 (6, 20)
Advanced cardiovascular support	3 (2, 6)	3 (2, 6)
Total (advanced + basic) cardiovascular support	10 (5, 18)	11 (6, 20)
Renal support	7 (3, 13)	7 (3, 14)

Please note that owing to the emerging nature of the epidemic, the sample of patients with COVID-19 represented in this table is biased towards patients with *shorter* lengths of stay in critical care prior to discharge or death, i.e. those who died or recovered quickly. \* Please see Definitions on page 34. Patients with ethnicity reported as 'not stated' excluded.

## Outcomes by receipt of organ support

Figure 14 presents 30-day survival for patients critically ill with confirmed COVID-19 who received mechanical ventilation during the first 24 hours of critical care compared with patients who did not.

Critical care outcomes for patients critically ill with confirmed COVID-19 who received advanced respiratory support at any point during critical care and who received basic respiratory support only are summarised in Table 13. Critical care outcomes for patients critically ill with confirmed COVID-19 who received renal support at any point during critical care and who did not receive renal support are summarised in Table 14.



**Figure 14 Survival and discharge by mechanical ventilation during the first 24 hours \***

\* Please see Definitions on page 34. Patients who are still in critical care are included only for the period in which they are known to have been in critical care, i.e. from their date of start of critical care until 28 May 2020. The numbers of patients available for reporting (in brackets) are the number of patients who are known to have either died or been discharged on or before that time point plus the number of patients known to have been still in critical care beyond that time point. Due to the emerging nature of the UK epidemic, the total number of patients available for reporting becomes smaller at longer lengths of follow-up. Compared with the survival statistics presented in Table 9 and Table 13, this approach makes better use of all available data, including data about patients who are still in critical care.

**Table 12 Outcome by combinations of organ support \***

Organ support received *	Patients with COVID-19 and outcome reported (N=8062)		Patients with viral pneumonia (non-COVID-19), 2017-19 (N=5782)
	Discharged alive from critical care	Died in critical care	Died in critical care
	n (%)	n (%)	(%)
Any respiratory support			
Basic only	1626 (80.3)	400 (19.7)	(11.2)
Advanced	2740 (47.6)	3021 (52.4)	(33.3)
Any renal support	742 (36.7)	1280 (63.3)	(46.1)
Combinations of advanced respiratory, advanced cardiovascular and renal support:			
Advanced respiratory support only	1594 (61.0)	1019 (39.0)	(18.7)
Advanced respiratory and advanced cardiovascular support only	477 (39.1)	742 (60.9)	(40.2)
Advanced respiratory and renal support only	396 (43.7)	510 (56.3)	(38.8)
Advanced respiratory, advanced cardiovascular and renal support	273 (26.7)	750 (73.3)	(56.6)

Please note that owing to the emerging nature of the epidemic, the sample of patients with COVID-19 represented in this table is biased towards patients with *shorter* lengths of stay in critical care prior to discharge or death, i.e. those who died or recovered quickly. \* Please see Definitions on page 34.



**Table 13 Outcome, length of stay and organ support by receipt of respiratory support \***

Critical care outcomes among patients who have been discharged or died	Patients receiving advanced respiratory support * (N=5761)	Patients receiving only basic respiratory support * (N=2026)
Outcome at end of critical care, n (%)		
Discharged	2740 (47.6)	1626 (80.3)
Died	3021 (52.4)	400 (19.7)
<b>Length of stay</b>		
Length of stay in critical care (days), median (IQR)		
Survivors	19 (11, 29)	4 (2, 7)
Non-survivors	10 (5, 16)	4 (2, 7)
<b>Organ support (Critical Care Minimum Dataset) *</b>		
Receipt of organ support, at any point, n (%)		
Basic respiratory support	3112 (54.0)	2026 (100.0)
Advanced cardiovascular support	2242 (39.0)	26 (1.3)
Basic cardiovascular support	5526 (95.9)	1706 (84.2)
Renal support	1918 (33.4)	70 (3.5)
Liver support	64 (1.1)	3 (0.1)
Neurological support	587 (10.2)	17 (0.8)
Duration of organ support (calendar days), median (IQR)		
Total (advanced + basic) respiratory support	13 (8, 22)	4 (3, 7)
Advanced cardiovascular support	3 (2, 6)	2 (1, 4)
Total (advanced + basic) cardiovascular support	14 (8, 22)	4 (3, 7)
Renal support	7 (3, 13)	3 (2, 5)

Please note that owing to the emerging nature of the epidemic, the sample of patients with COVID-19 represented in this table is biased towards patients with *shorter* lengths of stay in critical care prior to discharge or death, i.e. those who died or recovered quickly. \* Please see Definitions on page 34. Patients receiving no respiratory support excluded due to small numbers.

**Table 14 Outcome, length of stay and organ support by receipt of renal support \***

Critical care outcomes among patients who have been discharged or died	Patients receiving any renal support * (N=2011)	Patients not receiving any renal support * (N=5961)
Outcome at end of critical care, n (%)		
Discharged	733 (36.4)	3791 (63.6)
Died	1278 (63.6)	2170 (36.4)
<b>Length of stay</b>		
Length of stay in critical care (days), median (IQR)		
Survivors	25 (17, 35)	8 (4, 18)
Non-survivors	12 (7, 19)	7 (4, 12)
<b>Organ support (Critical Care Minimum Dataset) *</b>		
Receipt of organ support, at any point, n (%)		
Advanced respiratory support	1918 (95.4)	3832 (64.3)
Basic respiratory support	974 (48.5)	4156 (69.7)
Advanced cardiovascular support	1029 (51.2)	1244 (20.9)
Basic cardiovascular support	1934 (96.2)	5430 (91.1)
Liver support	42 (2.1)	26 (0.4)
Neurological support	240 (12.0)	365 (6.1)
Duration of organ support (calendar days), median (IQR)		
Advanced respiratory support	15 (9, 23)	10 (5, 18)
Total (advanced + basic) respiratory support	16 (10, 25)	8 (4, 16)
Advanced cardiovascular support	3 (2, 6)	3 (1, 5)
Total (advanced + basic) cardiovascular support	17 (9, 25)	8 (4, 16)

Please note that owing to the emerging nature of the epidemic, the sample of patients with COVID-19 represented in this table is biased towards patients with *shorter* lengths of stay in critical care prior to discharge or death, i.e. those who died or recovered quickly. \* Please see Definitions on page 34. Includes 132 patients requiring chronic renal replacement therapy for end stage renal disease prior to critical care; outcomes for these patients are similar.

Critical care outcomes for patients critically ill with confirmed COVID-19 who received advanced respiratory support at any point during critical care and who received basic respiratory support only across major patient subgroups are summarised in Table 15. Critical care outcomes for patients critically ill with confirmed COVID-19 who received renal support at any point during critical care and who did not receive renal support across major patient subgroups are summarised in Table 16.

**Table 15 Outcome by receipt of respiratory support \* and patient characteristics**

Patient characteristic	Patients receiving advanced respiratory support * (N=5761)		Patients receiving only basic respiratory support * (N=2026)	
	Discharged alive from critical care	Died in critical care	Discharged alive from critical care	Died in critical care
	n (%)	n (%)	n (%)	n (%)
Age at admission (years)				
16-39	300 (75.4)	98 (24.6)	195 (97.0)	6 (3.0)
40-49	533 (70.1)	227 (29.9)	265 (92.0)	23 (8.0)
50-59	885 (53.9)	758 (46.1)	469 (91.2)	45 (8.8)
60-69	725 (40.4)	1071 (59.6)	388 (79.3)	101 (20.7)
70-79	278 (26.2)	782 (73.8)	243 (61.1)	155 (38.9)
80+	18 (17.5)	85 (82.5)	66 (48.5)	70 (51.5)
Sex				
Female	843 (52.8)	755 (47.2)	544 (82.1)	119 (17.9)
Male	1897 (45.6)	2264 (54.4)	1082 (79.4)	281 (20.6)
Ethnicity				
White	1621 (47.8)	1772 (52.2)	1141 (79.2)	300 (20.8)
Mixed	33 (40.2)	49 (59.8)	24 (88.9)	3 (11.1)
Asian	356 (43.1)	470 (56.9)	171 (77.4)	50 (22.6)
Black	264 (46.8)	300 (53.2)	93 (83.0)	19 (17.0)
Other	207 (56.3)	161 (43.8)	78 (85.7)	13 (14.3)
Index of Multiple Deprivation (IMD) quintile				
1 (least deprived)	396 (48.6)	418 (51.4)	272 (81.0)	64 (19.0)
2	428 (47.3)	476 (52.7)	278 (81.0)	65 (19.0)
3	529 (48.4)	563 (51.6)	286 (79.7)	73 (20.3)
4	652 (45.4)	784 (54.6)	355 (82.2)	77 (17.8)
5 (most deprived)	678 (47.8)	741 (52.2)	398 (77.6)	115 (22.4)
Body mass index				
<25	632 (47.0)	713 (53.0)	383 (80.1)	95 (19.9)
25-<30	883 (44.7)	1094 (55.3)	499 (80.5)	121 (19.5)
30-<40	908 (52.1)	834 (47.9)	456 (84.9)	81 (15.1)
40+	207 (51.5)	195 (48.5)	141 (82.0)	31 (18.0)
Assistance required with daily activities				
No	2532 (48.2)	2716 (51.8)	1431 (84.9)	255 (15.1)
Yes	158 (38.8)	249 (61.2)	167 (56.2)	130 (43.8)
Any very severe comorbidities *				
No	2591 (48.6)	2744 (51.4)	1456 (83.4)	289 (16.6)
Yes	111 (32.6)	230 (67.4)	152 (60.3)	100 (39.7)

Please note that owing to the emerging nature of the epidemic, the sample of patients with COVID-19 represented in this table is biased towards patients with *shorter* lengths of stay in critical care prior to discharge or death, i.e. those who died or recovered quickly. \* Please see Definitions on page 34. Patients receiving no respiratory support excluded due to small numbers.

**Table 16 Outcome by receipt of renal support \* and patient characteristics**

Patient characteristic	Patients receiving any renal support * (N=2011)		Patients not receiving any renal support * (N=5961)	
	Discharged alive from critical care	Died in critical care	Discharged alive from critical care	Died in critical care
	n (%)	n (%)	n (%)	n (%)
Age at admission (years)				
16-39	52 (55.3)	42 (44.7)	469 (88.2)	63 (11.8)
40-49	164 (62.8)	97 (37.2)	656 (81.3)	151 (18.7)
50-59	236 (40.3)	349 (59.7)	1153 (71.5)	460 (28.5)
60-69	193 (28.7)	480 (71.3)	953 (57.5)	705 (42.5)
70-79	81 (21.8)	290 (78.2)	469 (41.7)	655 (58.3)
80+	7 (25.9)	20 (74.1)	91 (40.1)	136 (59.9)
Sex				
Female	180 (40.6)	263 (59.4)	1275 (67.3)	619 (32.7)
Male	553 (35.3)	1014 (64.7)	2516 (61.9)	1550 (38.1)
Ethnicity				
White	410 (36.8)	703 (63.2)	2455 (64.0)	1383 (36.0)
Mixed	10 (47.6)	11 (52.4)	48 (52.7)	43 (47.3)
Asian	98 (32.2)	206 (67.8)	449 (58.5)	319 (41.5)
Black	113 (40.5)	166 (59.5)	256 (62.0)	157 (38.0)
Other	45 (38.1)	73 (61.9)	248 (70.9)	102 (29.1)
Index of Multiple Deprivation (IMD) quintile				
1 (least deprived)	114 (42.2)	156 (57.8)	574 (63.6)	328 (36.4)
2	102 (34.6)	193 (65.4)	627 (63.8)	355 (36.2)
3	161 (41.6)	226 (58.4)	675 (61.8)	417 (38.2)
4	157 (30.5)	357 (69.5)	894 (63.7)	510 (36.3)
5 (most deprived)	187 (36.3)	328 (63.7)	932 (63.7)	532 (36.3)
Body mass index				
<25	152 (34.8)	285 (65.2)	921 (63.4)	532 (36.6)
25-<30	209 (30.9)	467 (69.1)	1216 (61.7)	754 (38.3)
30-<40	290 (43.2)	381 (56.8)	1110 (67.3)	540 (32.7)
40+	63 (42.3)	86 (57.7)	294 (67.7)	140 (32.3)
Assistance required with daily activities				
No	671 (36.4)	1172 (63.6)	3416 (65.3)	1817 (34.7)
Yes	50 (35.2)	92 (64.8)	307 (51.3)	291 (48.7)
Any very severe comorbidities *				
No	647 (36.0)	1149 (64.0)	3527 (64.9)	1906 (35.1)
Yes	78 (39.8)	118 (60.2)	213 (50.0)	213 (50.0)

Please note that owing to the emerging nature of the epidemic, the sample of patients with COVID-19 represented in this table is biased towards patients with *shorter* lengths of stay in critical care prior to discharge or death, i.e. those who died or recovered quickly. \* Please see Definitions on page 34. Includes 132 patients requiring chronic renal replacement therapy for end stage renal disease prior to critical care; outcomes for these patients are similar.

## Multivariable analyses

---

### Patient population:

- A multivariable Cox proportional hazards regression model was developed based solely on available data from patients critically ill with confirmed COVID-19 with a start of critical care between 1 March and 21 April 2020.
- All patients were followed up for a minimum of 7 days, and outcomes were censored at 30 days following the start of critical care. Patients discharged alive from hospital within 30 days, and those ending critical care within 30 days with missing hospital outcome were assumed to survive to 30 days.
- Patients either with a duration of critical care of less than 24 hours or with no data recorded for any core physiology (temperature, systolic blood pressure, heart rate or respiratory rate) were excluded.

### Prognostic factors:

- Prognostic factors were selected, a priori, based on established relationships with outcome for critically ill patients and on emerging information from the COVID-19 pandemic.
- Continuous prognostic factors were assessed for non-linearity using restricted cubic splines with up to five knots.
- Missing data were imputed using fully conditional specification (with models fitted in ten multiply imputed datasets and results combined).

### Results:

- Of 6989 patients, 58 had a duration of critical care of less than 24 hours and 595 had no data recorded for any core physiology; a cohort of 6336 patients were included in the model.
- The results of the multivariable modelling are presented in Figures 15-17.

### Explanation:

- The figures present the hazard ratio (solid lines or points) for values of each prognostic factor compared with a reference value (as indicated).
- A hazard ratio is a measure of how much more or less likely the event (death) is to occur.

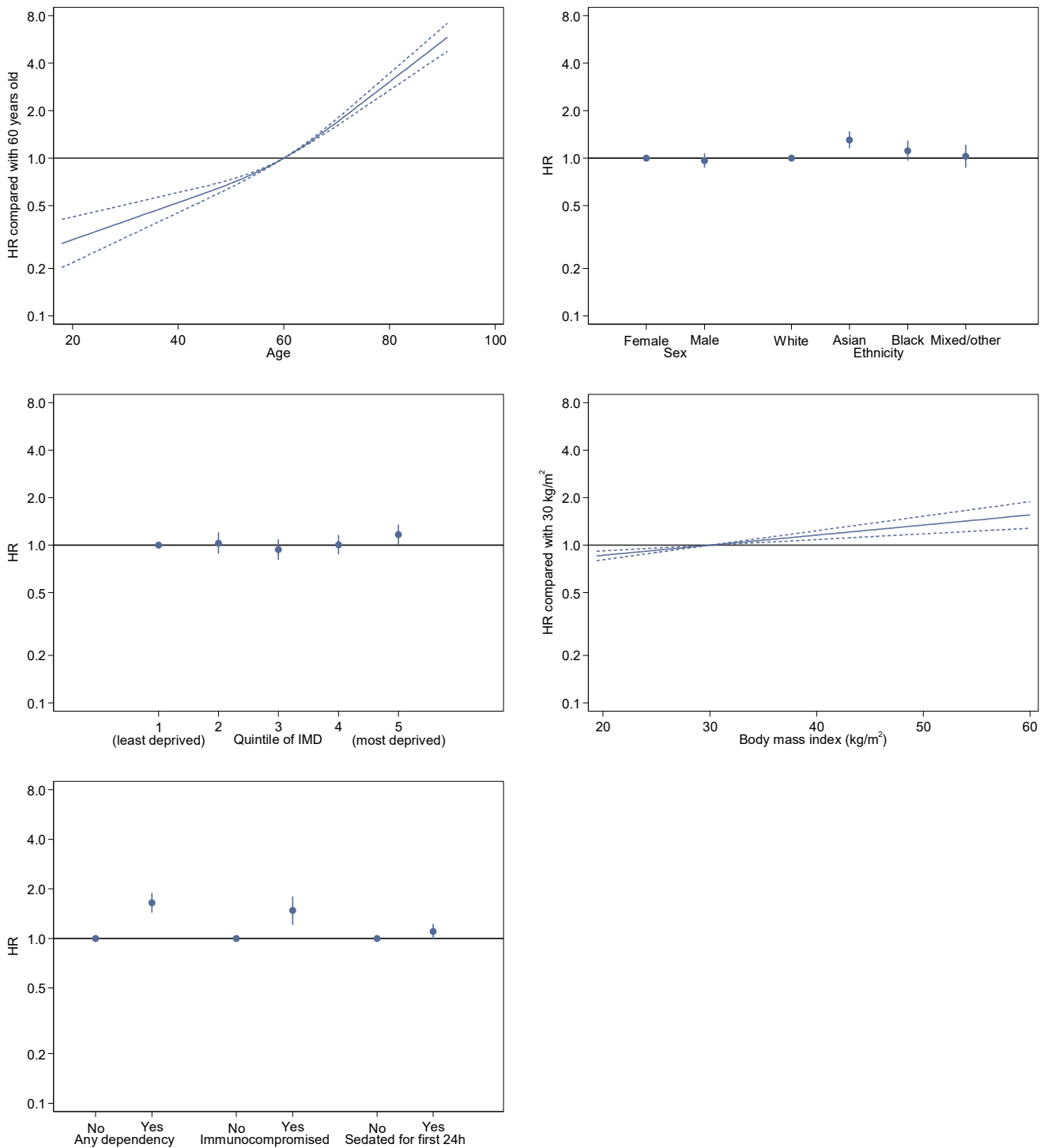
*For example, a patient aged 70 has a hazard ratio of approximately 2 compared with a patient aged 60; this means that they are twice as likely to die within 30 days of the start of critical care. In contrast, a patient aged 40 has a hazard ratio of approximately 0.5 compared with a patient aged 60; this means that they are half as likely to die within 30 days of the start of critical care. A hazard ratio of 1 means that the risk of death is the same.*

- The hazard ratios indicate the association between each prognostic factor and the outcome adjusted for the effect of all the other variables in the model.

*For example, the hazard ratio for dependency is adjusted for patients with dependency being older on average than those without dependency.*

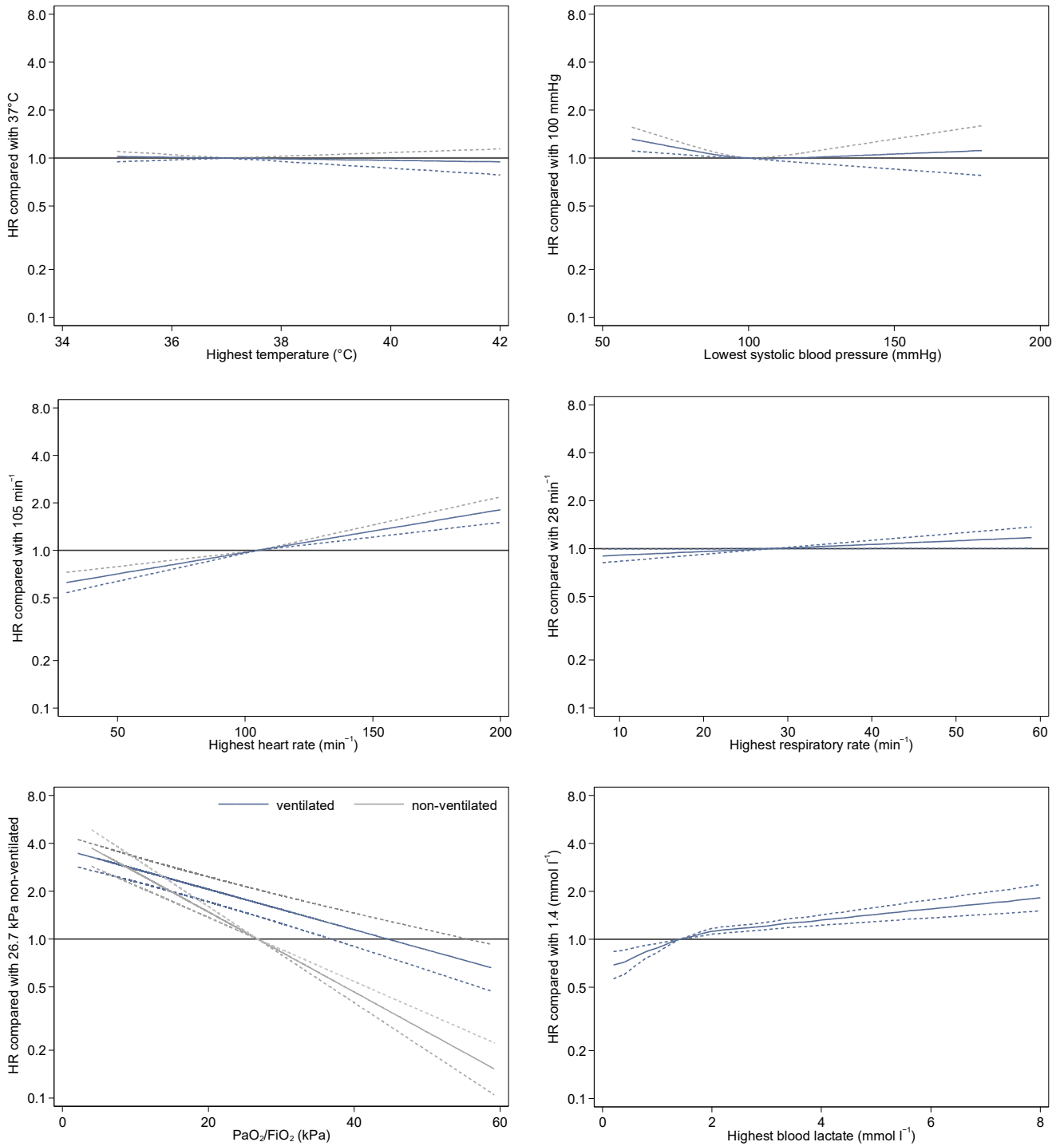
- The estimated hazard ratios are shown with 95% confidence intervals (as dashed lines or vertical spikes) indicating a range of possible values for the hazard ratio that will include the true value 19 times out of 20.

A manuscript reporting the full details of the modelling is being prepared for publication.



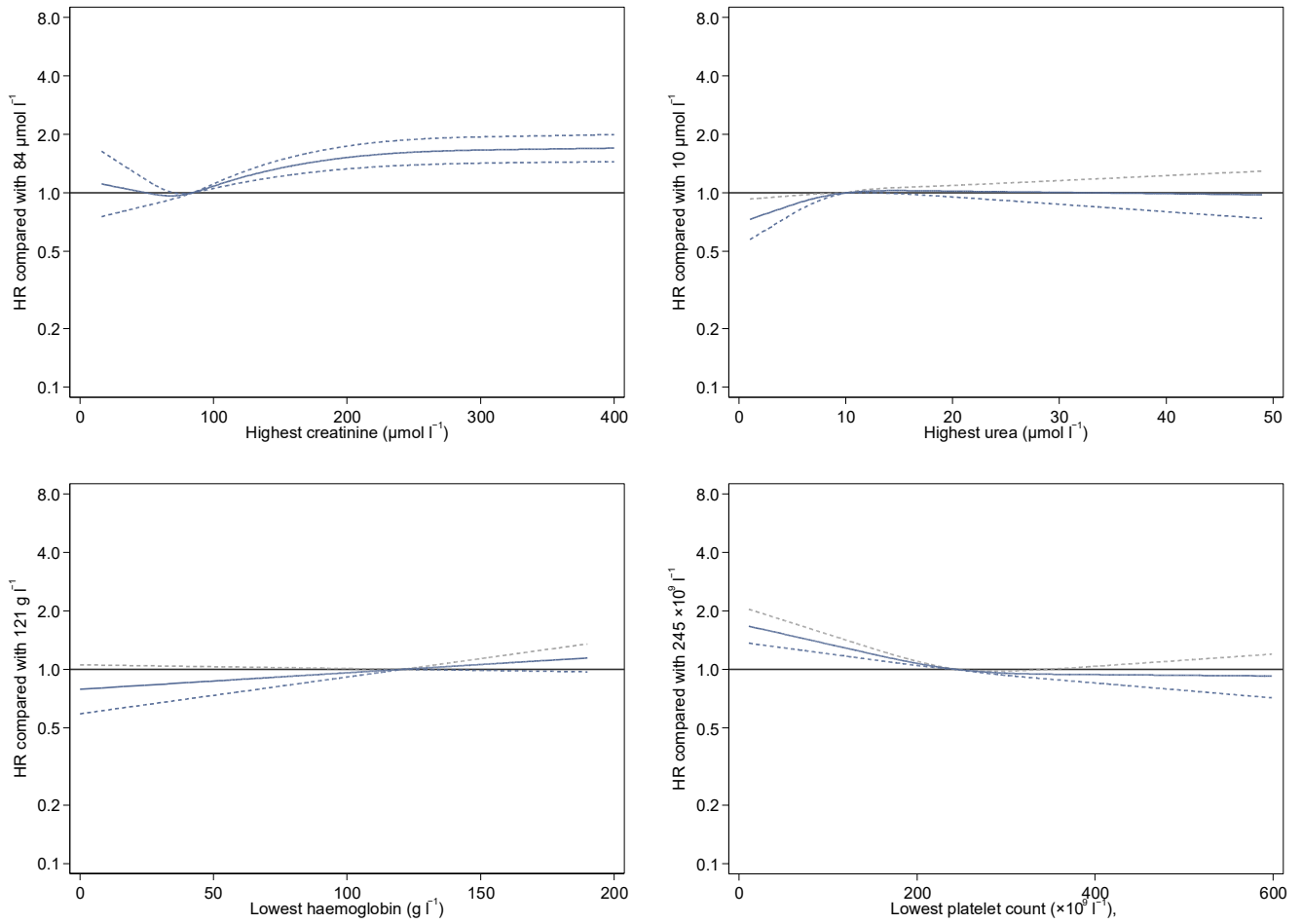
**Figure 15 Hazard ratios and 95% confidence intervals from Cox proportional hazards regression model for death within 30 days following start of critical care: demographics and medical history**

Please note that hazard ratios (HR) are reported relative to the median value for age (60 years) and the threshold for defining obesity for body mass index (30 kg/m<sup>2</sup>). Immunocompromised includes the conditions as defined on page 34 and also metastatic disease and haematological malignancy.



**Figure 16 Hazard ratios and 95% confidence intervals from Cox proportional hazards regression model for death within 30 days following start of critical care: physiology (1)**

Please note that hazard ratios (HR) are reported relative to the median value for each physiological parameter (as indicated on the y-axis) except for PaO<sub>2</sub>/FiO<sub>2</sub> which is reported relative to the threshold for defining ARDS (26.7 kPa).



**Figure 17 Hazard ratios and 95% confidence intervals from Cox proportional hazards regression model for death within 30 days following start of critical care: physiology (2)**

Please note that hazard ratios (HR) are reported relative to the median value for each physiological parameter (as indicated on the y-axis).



## Data completeness

Completeness of key variables is summarised in Table 17.

**Table 17 Data completeness of key variables**

Variable	N missing %
24h variables (N=9347)	
NHS number (used to combine transfers and readmissions)	224 (2.4)
Age	4 (0.0)
Sex	4 (0.0)
Currently or recently pregnant	12 (1.8) †
Ethnicity	851 (9.1)
Index of Multiple Deprivation	178 (1.9)
BMI	709 (7.6)
Prior dependency *	313 (3.3)
Very severe comorbidities	238 (2.5)
Prior hospital length of stay	18 (0.2)
CPR within previous 24h	78 (0.8)
Mechanical ventilation during the first 24h *	529 (5.7)
APACHE II Score	336 (3.6)
PaO2/FiO2 ratio	930 (9.9)
Outcome variables (N=8062)	
Length of stay in critical care	83 (1.0)
Advanced respiratory support *	79 (1.0)
Basic respiratory support *	73 (0.9)
Advanced cardiovascular support *	83 (1.0)
Basic cardiovascular support *	69 (0.9)
Renal support *	90 (1.1)
Liver support *	100 (1.2)
Neurological support *	100 (1.2)

\* Please see Definitions on page 34; † % of female patients aged 16-49 years

## Definitions

---

**Patients** are classified as either:

- Notification only received: ICNARC has received a notification of the patient's admission to critical care but has not received any patient data from the first 24 hours or beyond
- 24h data only received: ICNARC has received patient data relating to the first 24 hours in critical care but has not yet been notified of the patient's critical care outcome
- Outcome data received: ICNARC has received submission of data relating to the patient's critical care outcome (e.g. survival, length of stay, duration of organ support) (Please note: to ensure that data are as complete and up-to-date as possible, we have begun transitioning to allow units to submit a reduced set of minimum outcome data, less than is ordinarily included in the full Case Mix Programme)
- Hospital outcome data received: Data have been updated with outcomes at ultimate discharge from hospital (Please note: this data is currently limited for patients with COVID-19 and not included in this report)

**Index of Multiple Deprivation (IMD)** is based on the patient's usual residential postcode (assigned at the level of Lower Layer Super Output Area) according to:

- English Index of Multiple Deprivation 2019 for postcodes in England
- Welsh Index of Multiple Deprivation 2019 for postcodes in Wales
- Northern Ireland Multiple Deprivation Measure 2017 for postcodes in Northern Ireland

**Body mass index** is calculated as the weight in kilograms divided by the height in metres squared. Weight and height values may have been measured or estimated.

**Very severe comorbidities** must have been evident within the six months prior to critical care and documented at or prior to critical care:

- Cardiovascular: symptoms at rest
- Respiratory: shortness of breath with light activity or home ventilation
- Renal: renal replacement therapy for end-stage renal disease
- Liver: biopsy-proven cirrhosis, portal hypertension or hepatic encephalopathy
- Metastatic disease: distant metastases
- Haematological malignancy: acute or chronic leukaemia, multiple myeloma or lymphoma
- Immunocompromise: chemotherapy, radiotherapy or daily high dose steroid treatment in previous six months, HIV/AIDS or congenital immune deficiency

**Mechanical ventilation during the first 24 hours** was identified by the recording of a ventilated respiratory rate, indicating that all or some of the breaths or a portion of the breaths (pressure support) were delivered by a mechanical device. This usually indicates invasive ventilation; BPAP (bilevel positive airway pressure) would meet this definition but CPAP (continuous positive airway pressure) does not.

**Organ support** is recorded as the number of calendar days (00:00-23:59) on which the support was received at any time, defined as:

- Advanced respiratory: invasive ventilation, BPAP via trans-laryngeal tube or tracheostomy, CPAP via trans-laryngeal tube, extracorporeal respiratory support
- Basic respiratory: >50% oxygen by face mask, close observation due to potential for acute deterioration, physiotherapy/suction to clear secretions at least two-hourly, recently extubated after a period of mechanical ventilation, mask/hood CPAP/BPAP, non-invasive ventilation, CPAP via a tracheostomy, intubated to protect airway
- Advanced cardiovascular: multiple IV/rhythm controlling drugs (at least one vasoactive), continuous observation of cardiac output, intra-aortic balloon pump, temporary cardiac pacemaker
- Basic cardiovascular: central venous catheter, arterial line, single IV vasoactive/rhythm controlling drug
- Renal: acute renal replacement therapy, renal replacement therapy for chronic renal failure where other organ support is received
- Liver: management of coagulopathy and/or portal hypertension for acute on chronic hepatocellular failure or primary acute hepatocellular failure
- Neurological: central nervous system depression sufficient to prejudice airway, invasive neurological monitoring, continuous IV medication to control seizures, therapeutic hypothermia

## Acknowledgement

---

Please acknowledge the source of these data in all future presentations (oral and/or written), as follows:

“These data derive from the ICNARC Case Mix Programme Database. The Case Mix Programme is the national clinical audit of patient outcomes from adult critical care coordinated by the Intensive Care National Audit & Research Centre (ICNARC). For more information on the representativeness and quality of these data, please contact ICNARC.”