

CMP case mix and outcome summary statistics

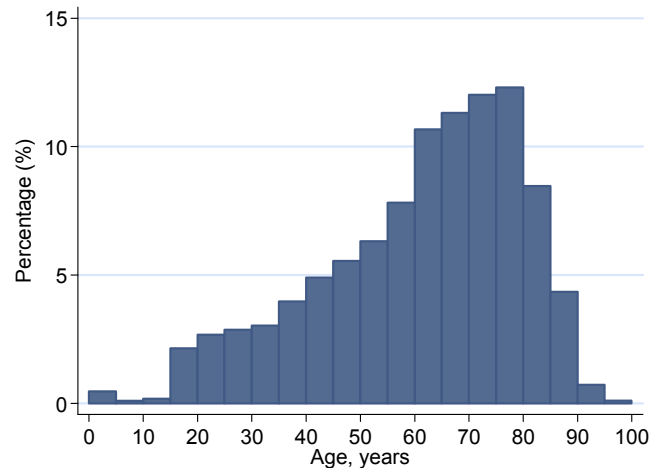
Based on 89,682 admissions to 180 NHS adult, general critical care units, 1 April 2008 to 31 March 2009

Demographics

| | | |
|---|--------------------|---------------|
| Number of admissions | | 89,682 |
| Number of patients | | 82,922 |
| Age (years), mean (SD) | | 60.5 (18.6) |
| Sex (male), n (%) | | 50,580 (56.4) |
| Number of severe conditions in past medical history*, n (%) | 0 | 75,123 (84.4) |
| | 1 | 10,133 (11.4) |
| | 2 | 3,029 (3.4) |
| | 3 or more | 697 (0.8) |
| Surgical status, n (%) | Elective/scheduled | 20,227 (22.6) |
| | Emergency/urgent | 16,208 (18.1) |
| | Non-surgical | 53,236 (59.4) |

© ICNARC 2010

*No evidence to assess past medical history for 698 (0.8%) admissions



© ICNARC 2010

ICNARC (2009) model

| | |
|---|------------------|
| Physiology score, mean (SD) | 17.6 (9.7) |
| Predicted acute hospital mortality* (%), median (IQR) | 16.9 (5.2, 42.8) |
| Overall predicted acute hospital mortality* (%) | 26.7 |

© ICNARC 2010

*Excluding 23 (0.03%) admissions with insufficient data

Mortality

| | | |
|--|--------------------|---------------|
| CMP unit mortality*, n (%) | All admissions | 15,358 (17.1) |
| | Elective/scheduled | 496 (2.4) |
| | Emergency/urgent | 2,221 (13.7) |
| | Non-surgical | 12,641 (23.8) |
| Ultimate acute hospital mortality**, n (%) | All admissions | 21,787 (25.8) |
| | Elective/scheduled | 1,220 (6.1) |
| | Emergency/urgent | 3,586 (23.4) |
| | Non-surgical | 16,981 (34.4) |

© ICNARC 2010

*Mortality at discharge from the CMP unit. Excluding 4 (0.004%) admissions with missing data

**Excluding: 4,203 (4.7%) readmissions within the same acute hospital stay; 869 (1.0%) admissions with missing data

Length of stay (LOS)

| | | Median (IQR) | Mean (SD) |
|-----------------------------------|------------------------------|----------------|-------------|
| CMP unit LOS* (days) | All admissions | 2.1 (1.0, 5.2) | 5.0 (8.5) |
| | Unit survivors | 2.1 (1.0, 5.1) | 4.9 (8.4) |
| | Unit non-survivors | 2.1 (0.7, 6.1) | 5.3 (9.3) |
| Total acute hospital LOS** (days) | All admissions | 13 (6, 28) | 23.3 (42.9) |
| | Acute hospital survivors | 15 (8, 30) | 25.4 (46.9) |
| | Acute hospital non-survivors | 8 (3, 21) | 17.4 (28.0) |

© ICNARC 2010

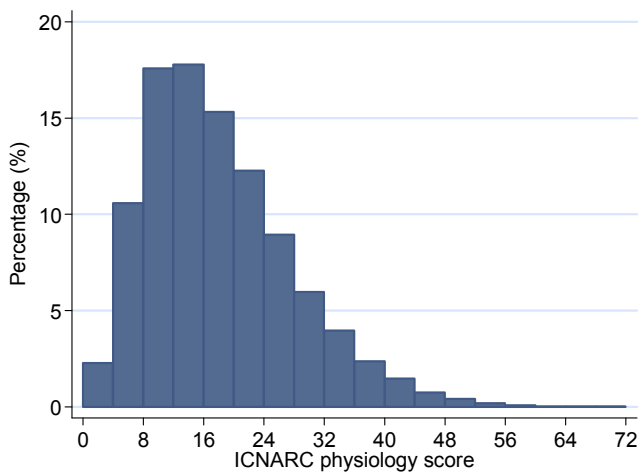
*Does not include continuous critical care pre-/post-admission to the CMP unit. Excluding 10 (0.01%) admissions with missing data

**Excluding: 4,203 (4.7%) readmissions within the same acute hospital stay; 869 (1.0%) admissions with missing data

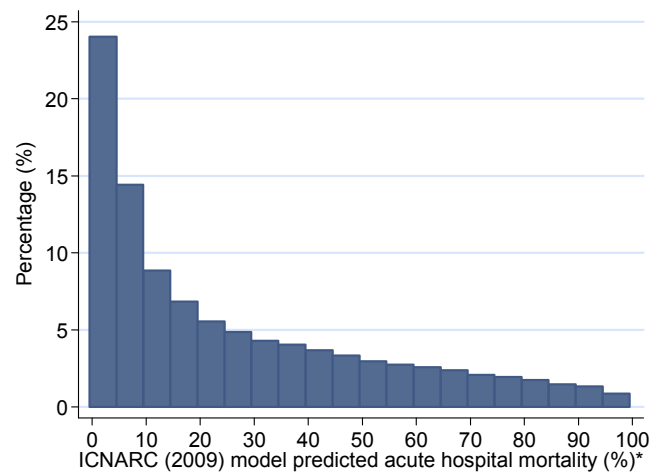
CMP case mix and outcome summary statistics

Based on 89,682 admissions to 180 NHS adult, general critical care units, 1 April 2008 to 31 March 2009

Distribution of ICNARC physiology score and ICNARC (2009) model predicted acute hospital mortality



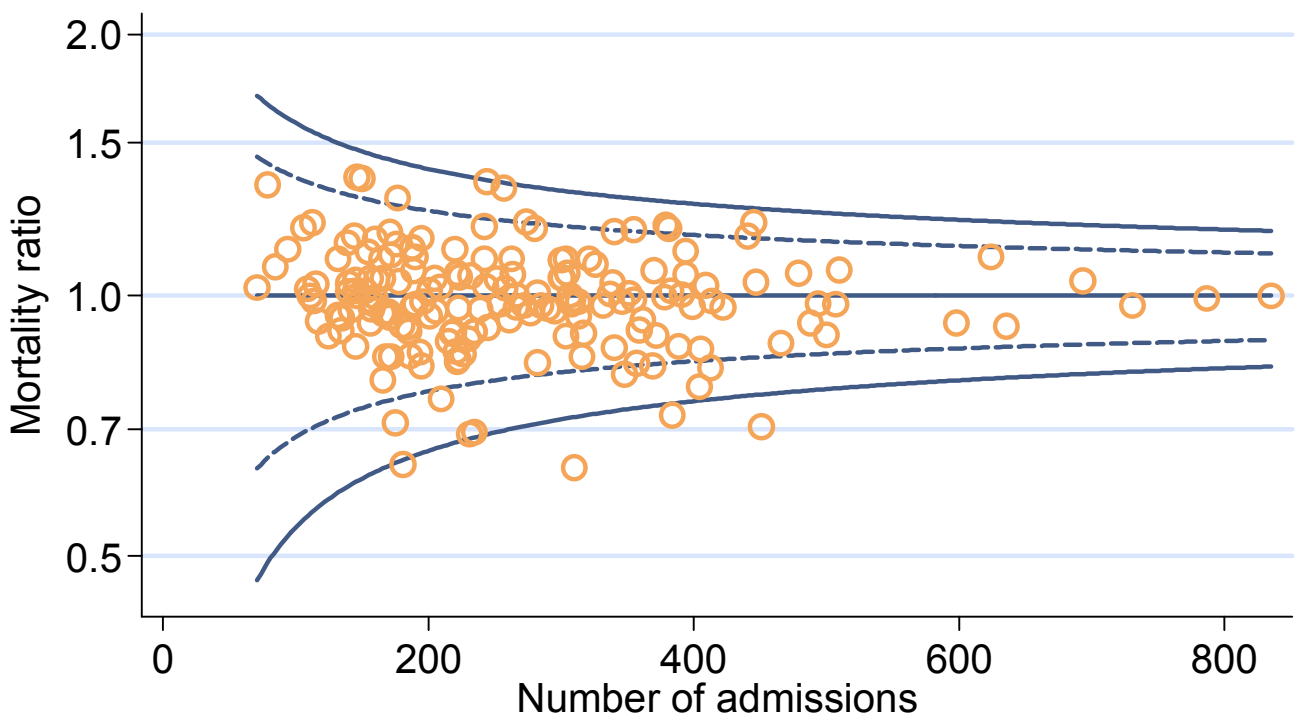
© ICNARC 2010



© ICNARC 2010

*Excluding 23 (0.03%) admissions with insufficient data

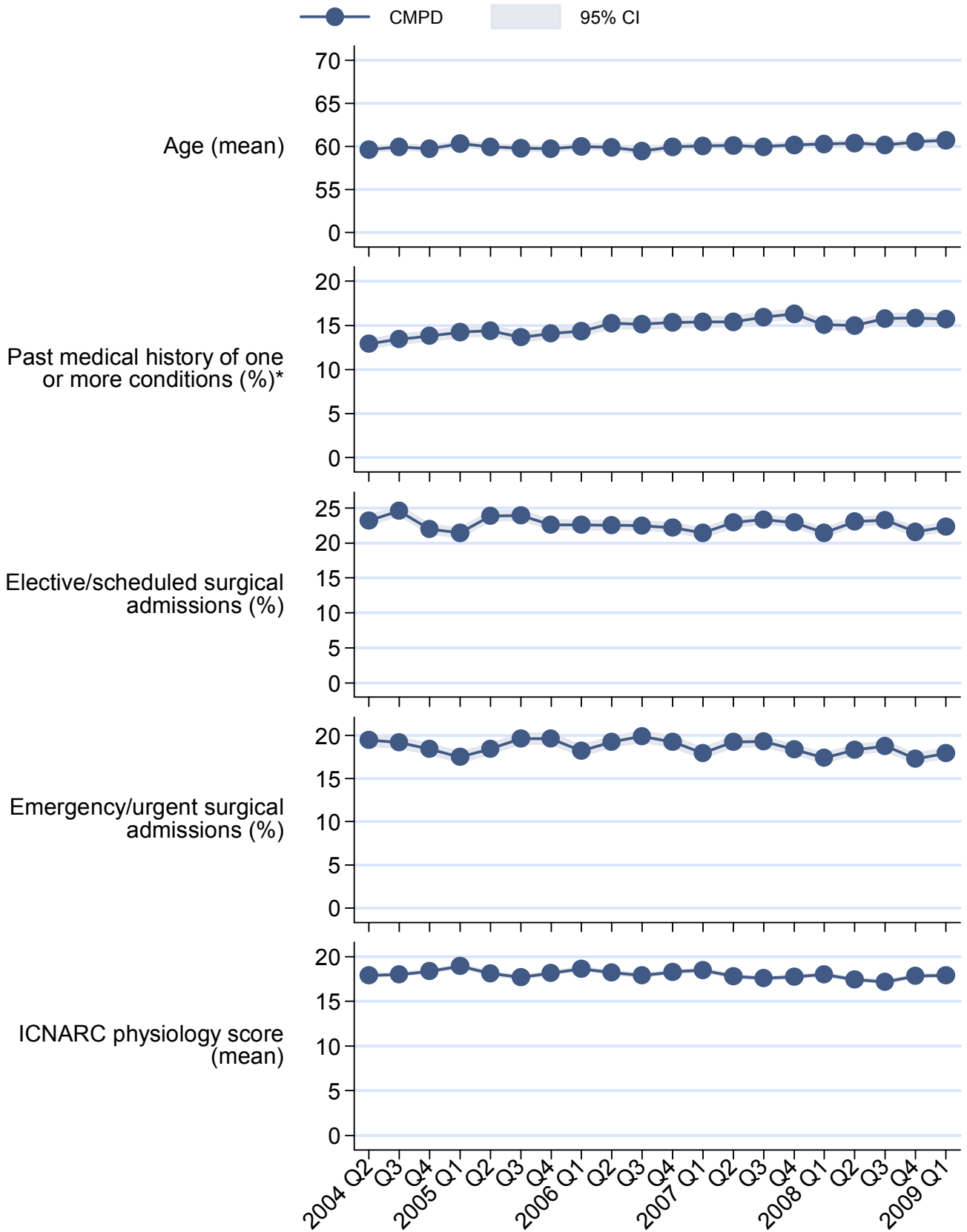
Funnel plot of mortality ratio – ICNARC (2009) model



© ICNARC 2010

*Based on the last six months validated data for each unit from 1 April 2008 to 31 March 2009

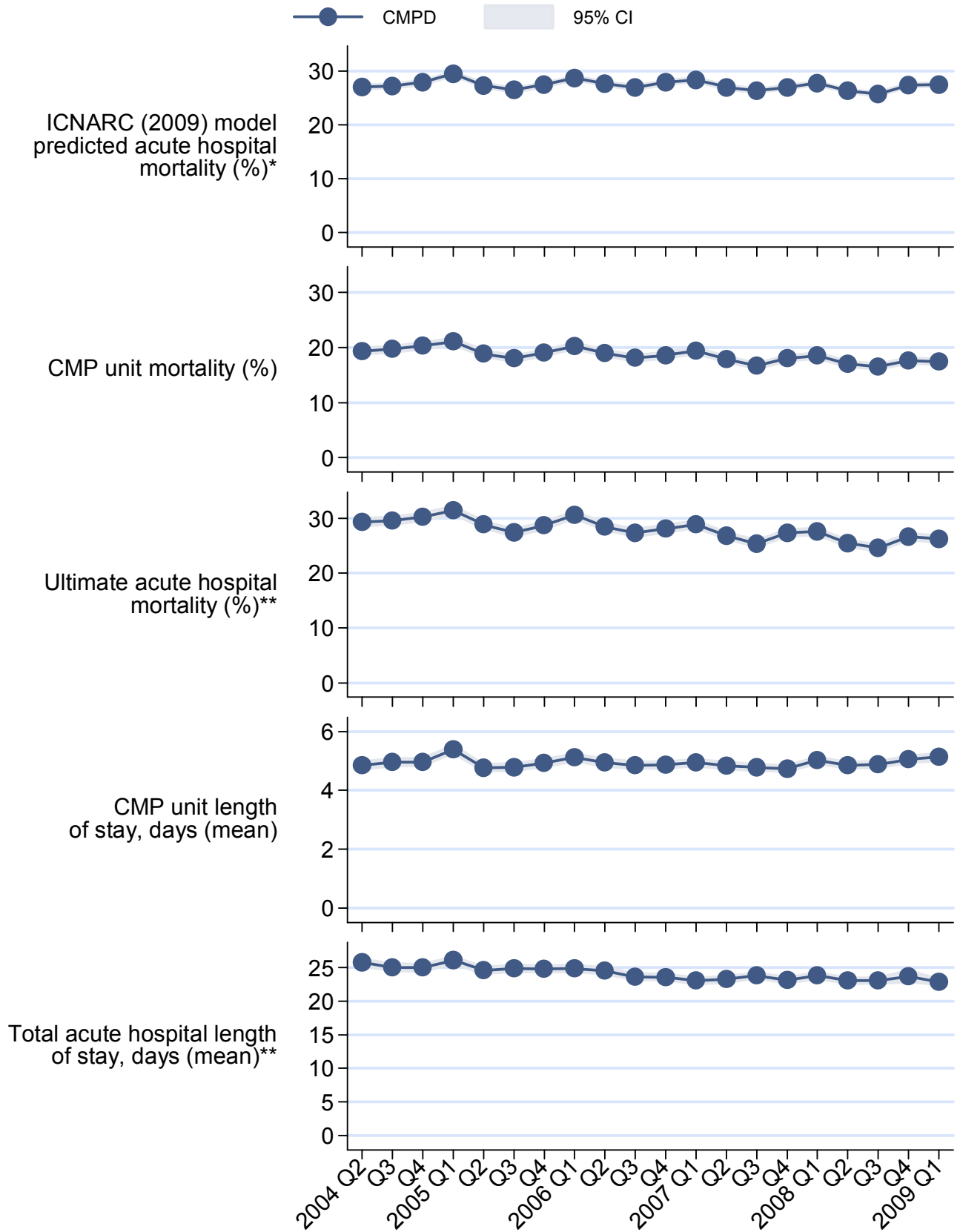
CMP case mix and outcome trends



© ICNARC 2010

*Excluding 6,620 (1.7%) admissions with no evidence to assess past medical history

CMP case mix and outcome trends



© ICNARC 2010

*Excluding 344 (0.09%) admissions with insufficient data

**Excluding 20,124 (5.0%) readmissions within the same acute hospital stay