



Flows

ICNARC Case Mix Programme

Version 3.1

© 2015

Intensive Care National Audit & Research Centre

All rights reserved

ICNARC disclaims any proprietary interest in any trademarks or tradenames
other than its own

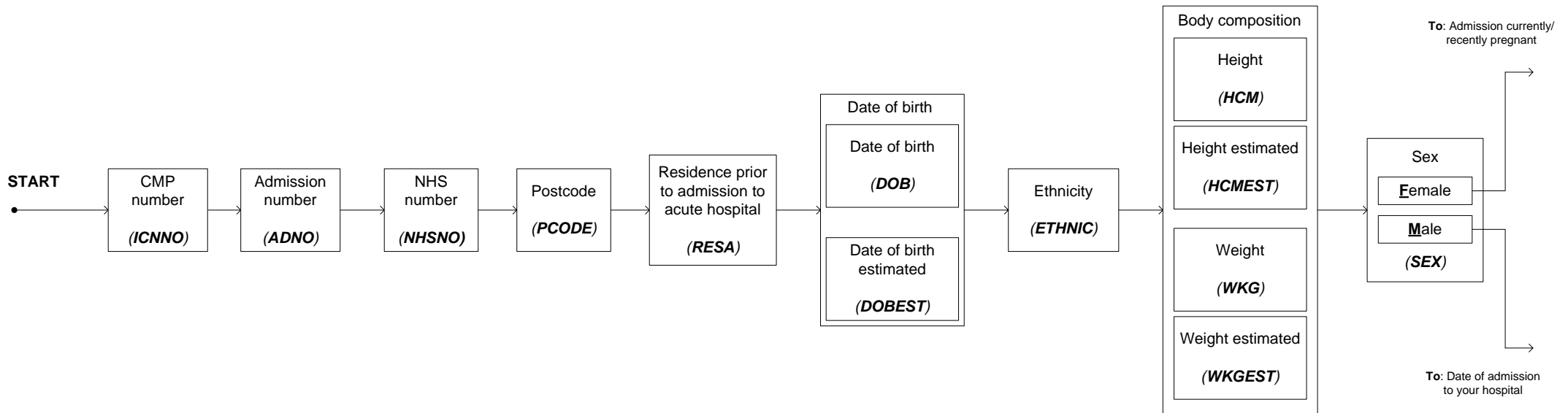
Flows

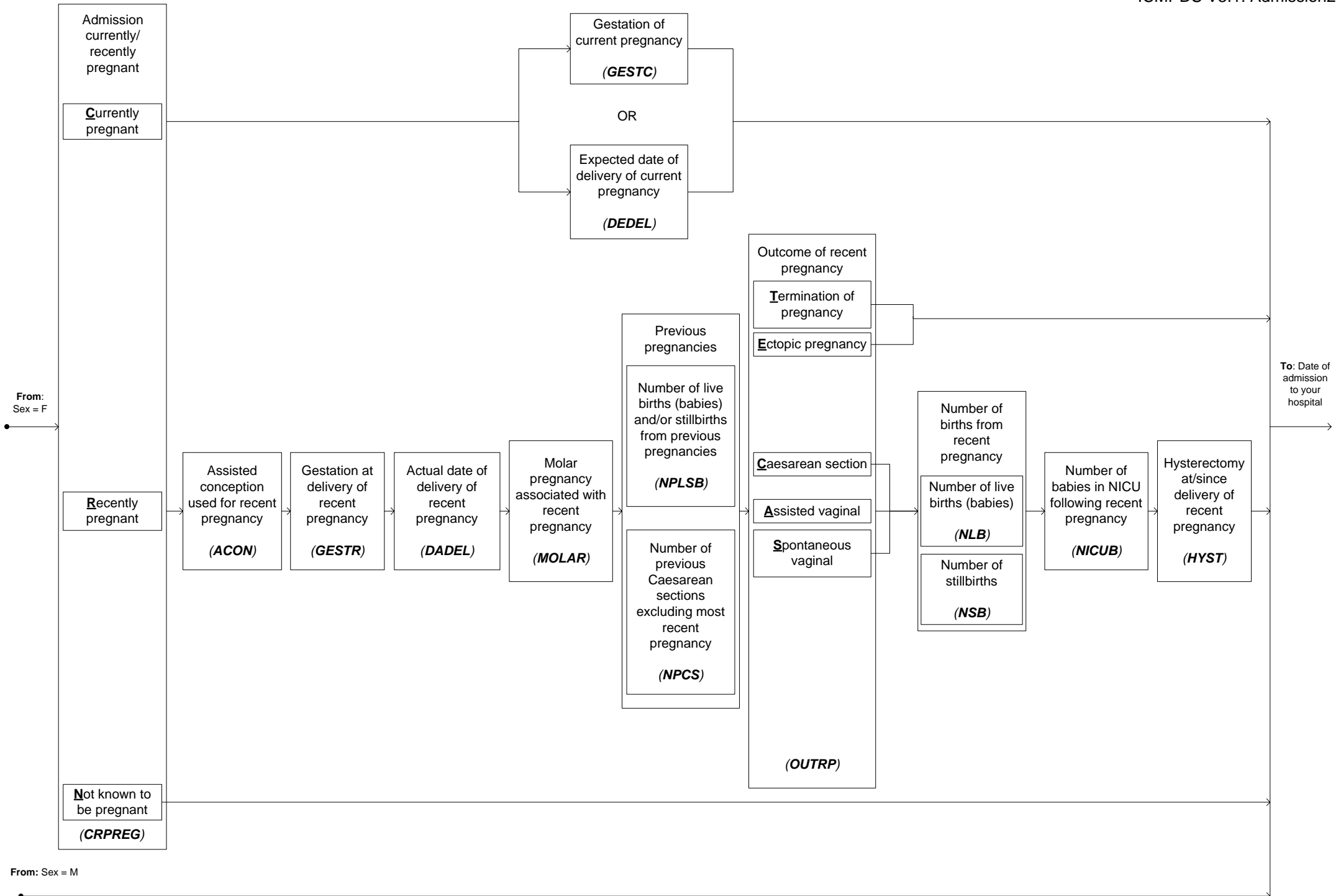
Order

- The ICNARC Case Mix Programme Dataset Specification (ICMPDS) Version 3.1 contains the following sections, which appear in this order in the flows:
 - Admission
 - Reason for Admission
 - Past Medical History
 - Physiology
 - Infection
 - Outcome

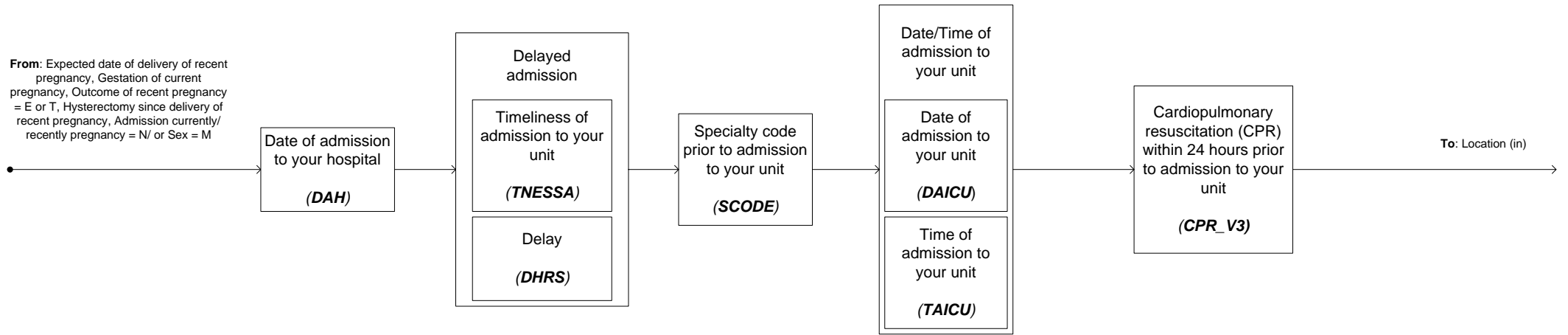
Display

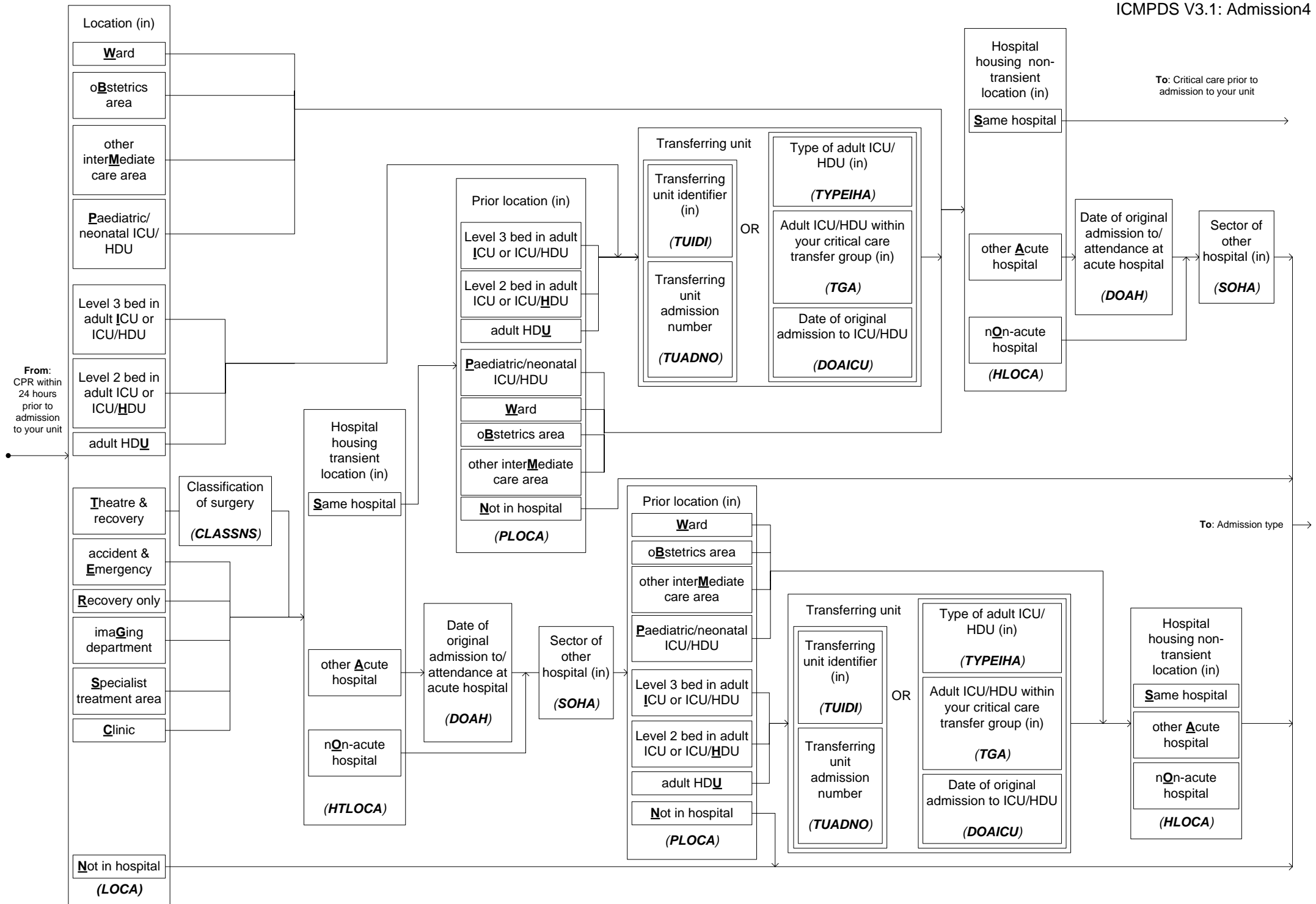
- flows run from left to right displaying the field and field description together
 - sections are indicated in the header of each page
-

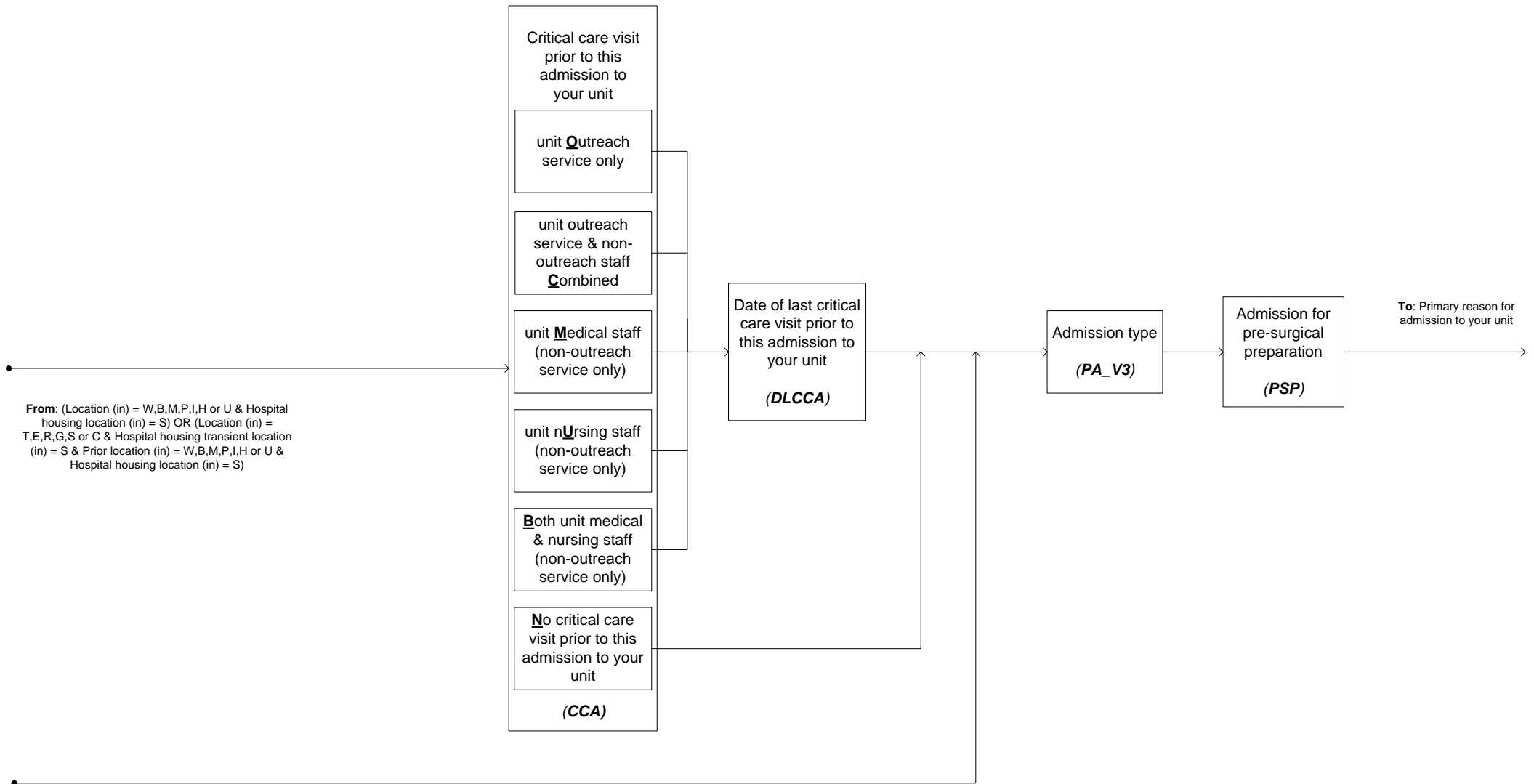




From: Expected date of delivery of recent pregnancy, Gestation of current pregnancy, Outcome of recent pregnancy = E or T, Hysterectomy since delivery of recent pregnancy, Admission currently/recently pregnancy = N/ or Sex = M

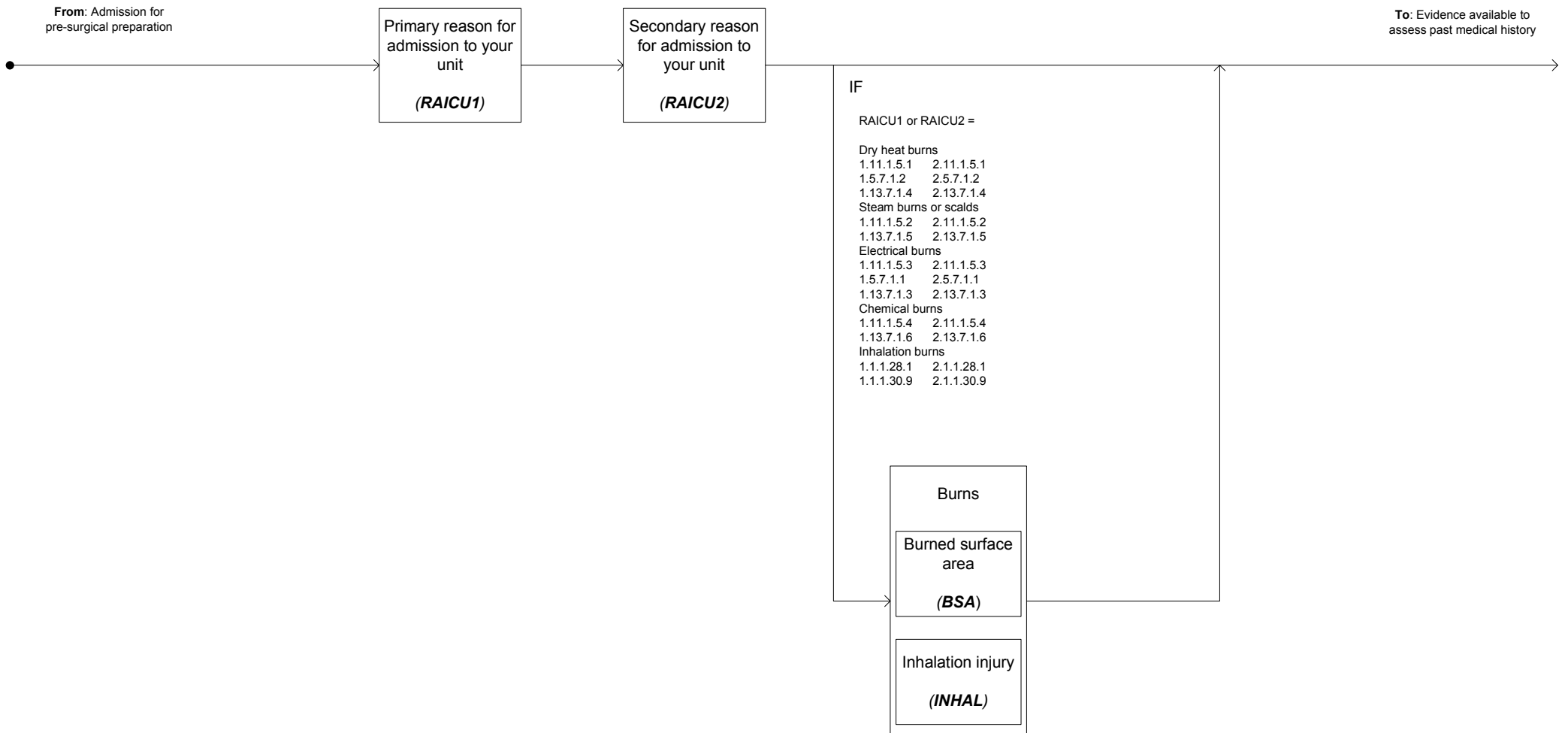


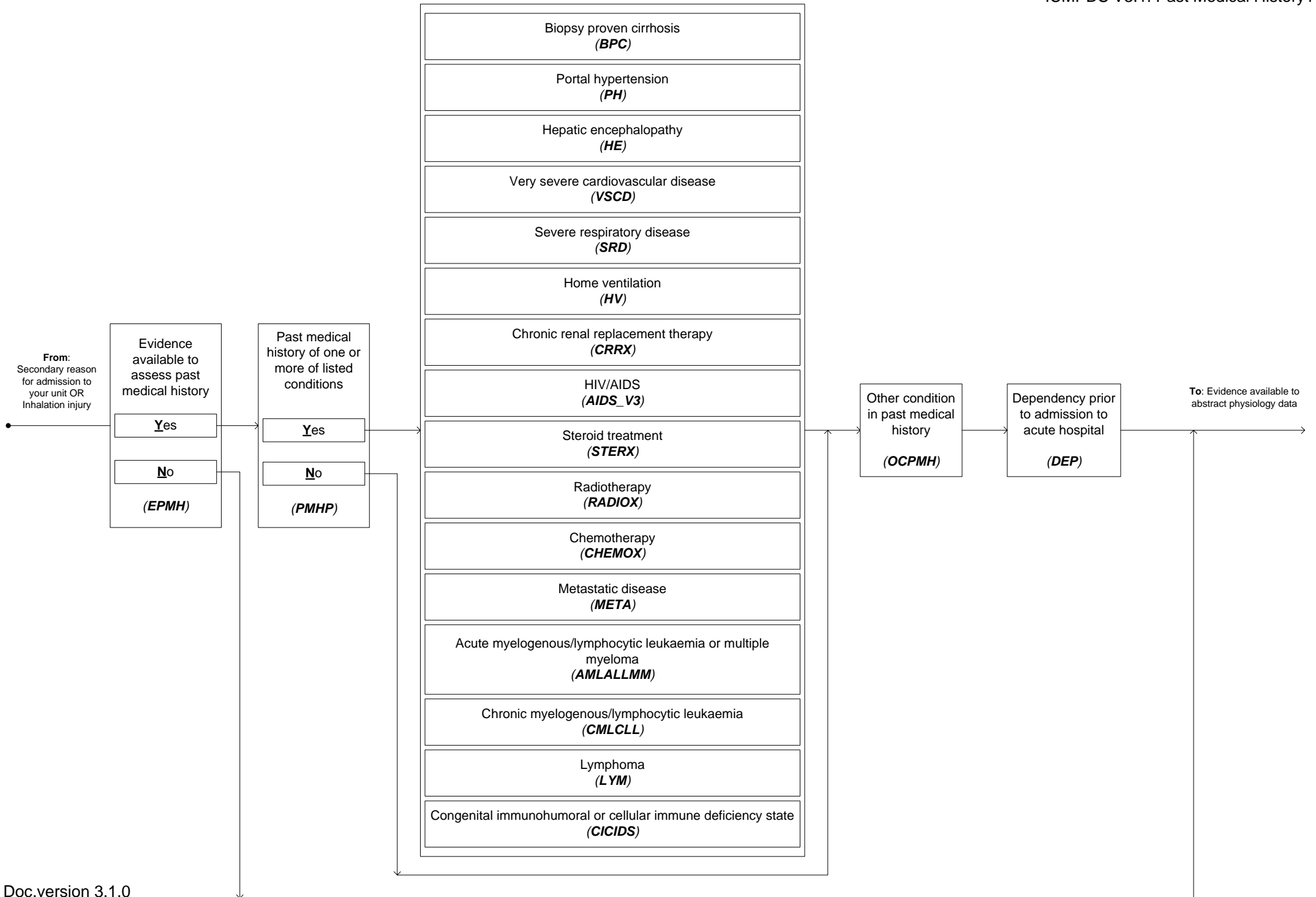


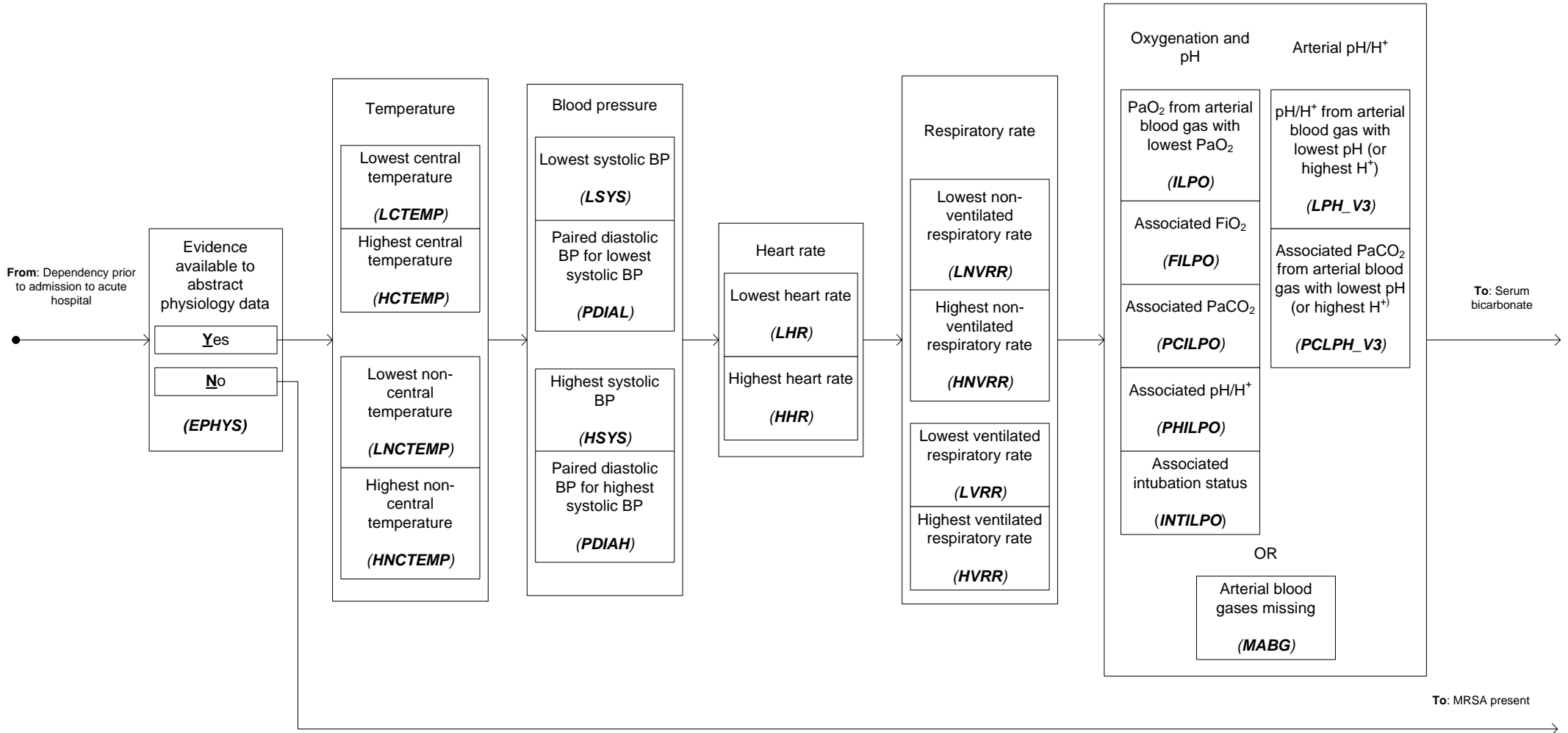


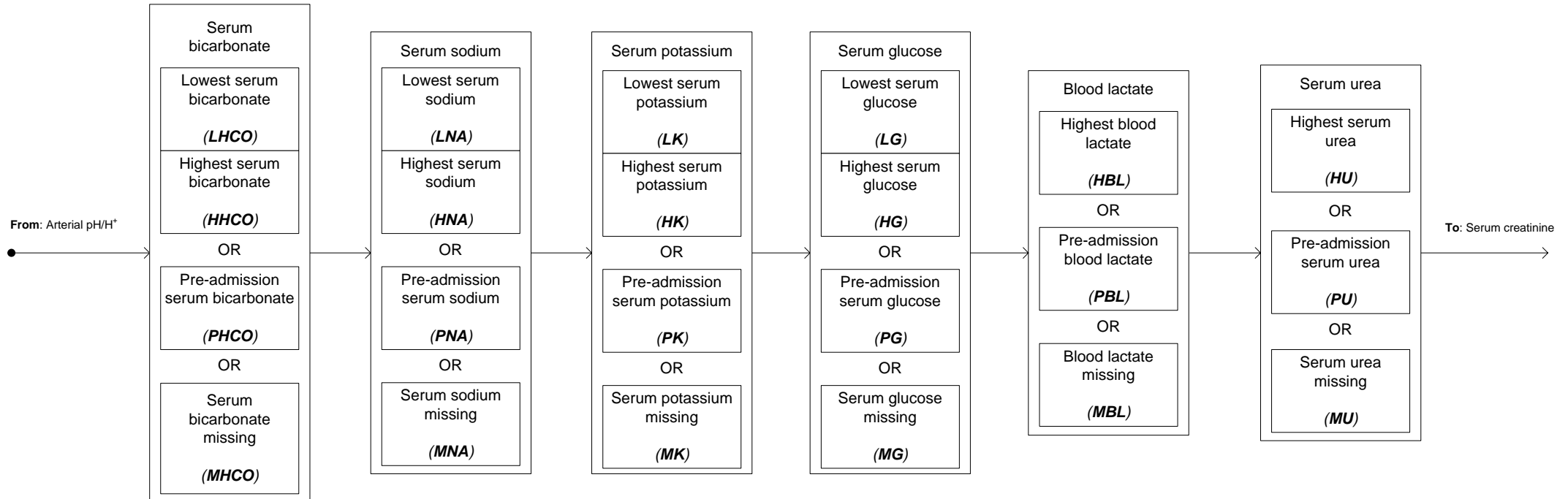
From: (Location (in) = W,B,M,P,I,H or U & Hospital housing location (in) = S) OR (Location (in) = T,E,R,G,S or C & Hospital housing transient location (in) = S & Prior location (in) = W,B,M,P,I,H or U & Hospital housing location (in) = S)

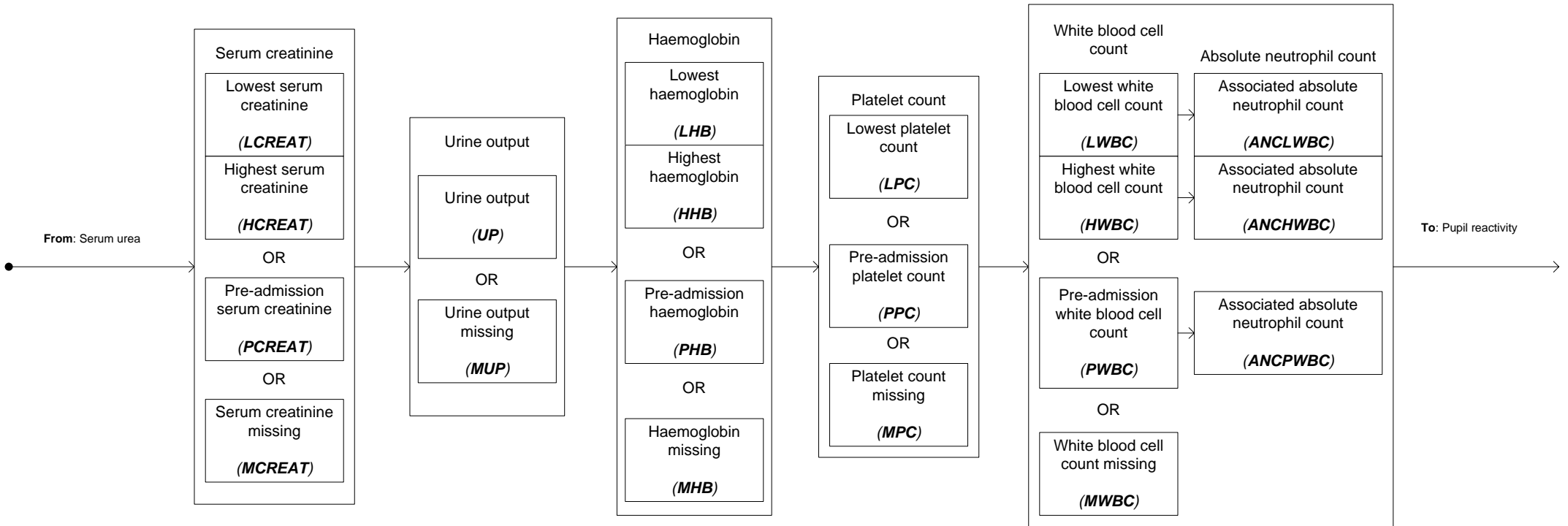
From: (Location (in) = W,B,M,P,I,H or U & Hospital housing location (in) = A or O) OR (Location (in) = T,E,R,G,S or C & Hospital housing transient location (in) = S & Prior location (in) = W,B,M,P,I,H or U & Hospital housing location (in) = A or O) OR (Location (in) = T,E,R,G,S or C & Hospital housing transient location (in) = S & Prior location (in) = N) OR (Location (in) = T,E,R,G,S or C & Hospital housing transient location (in) = A or O) OR Location (in) = N

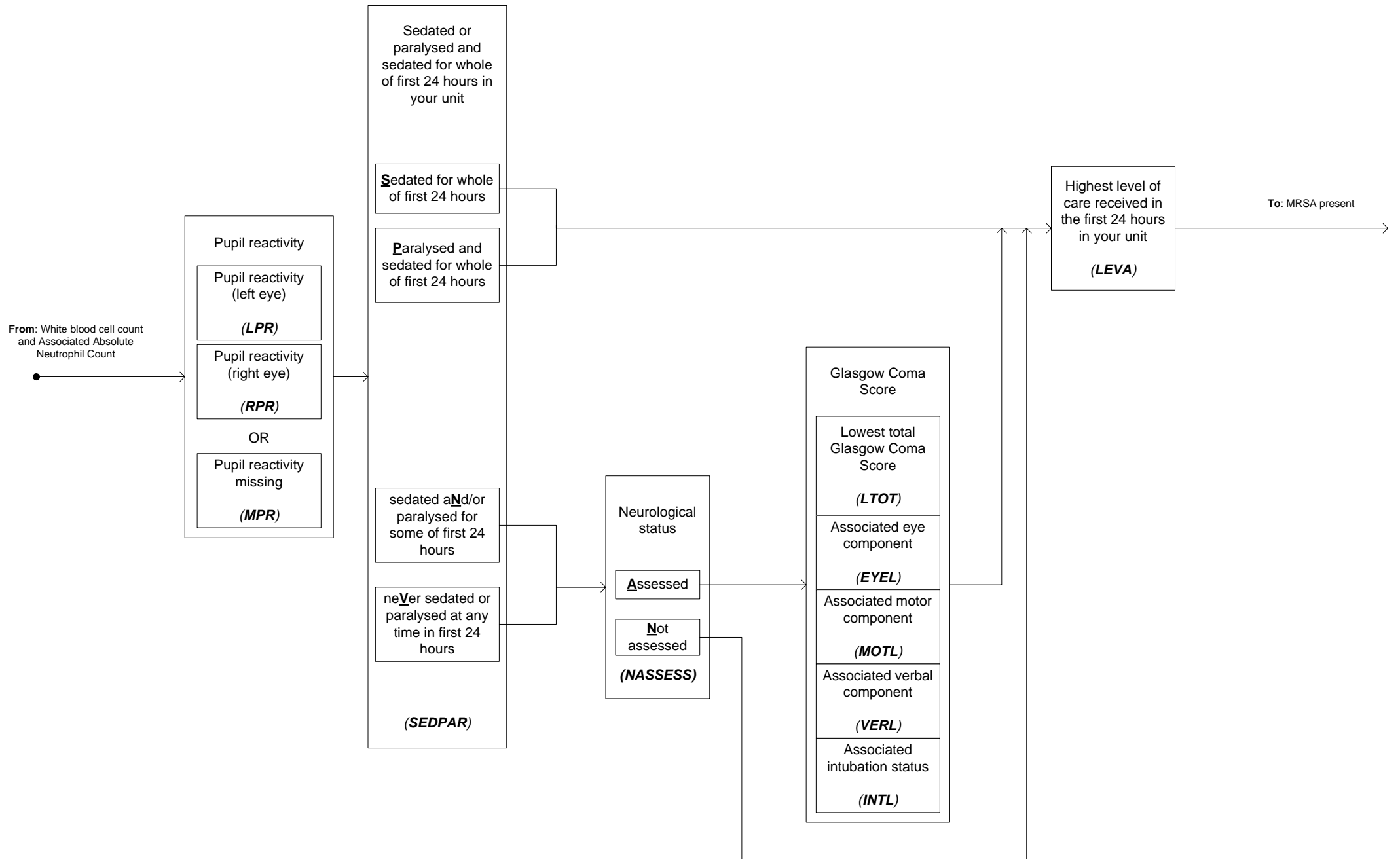


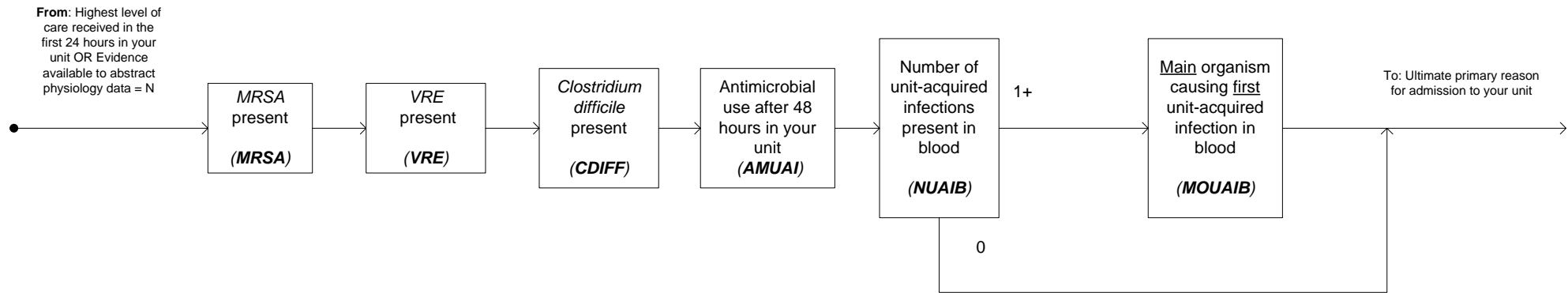


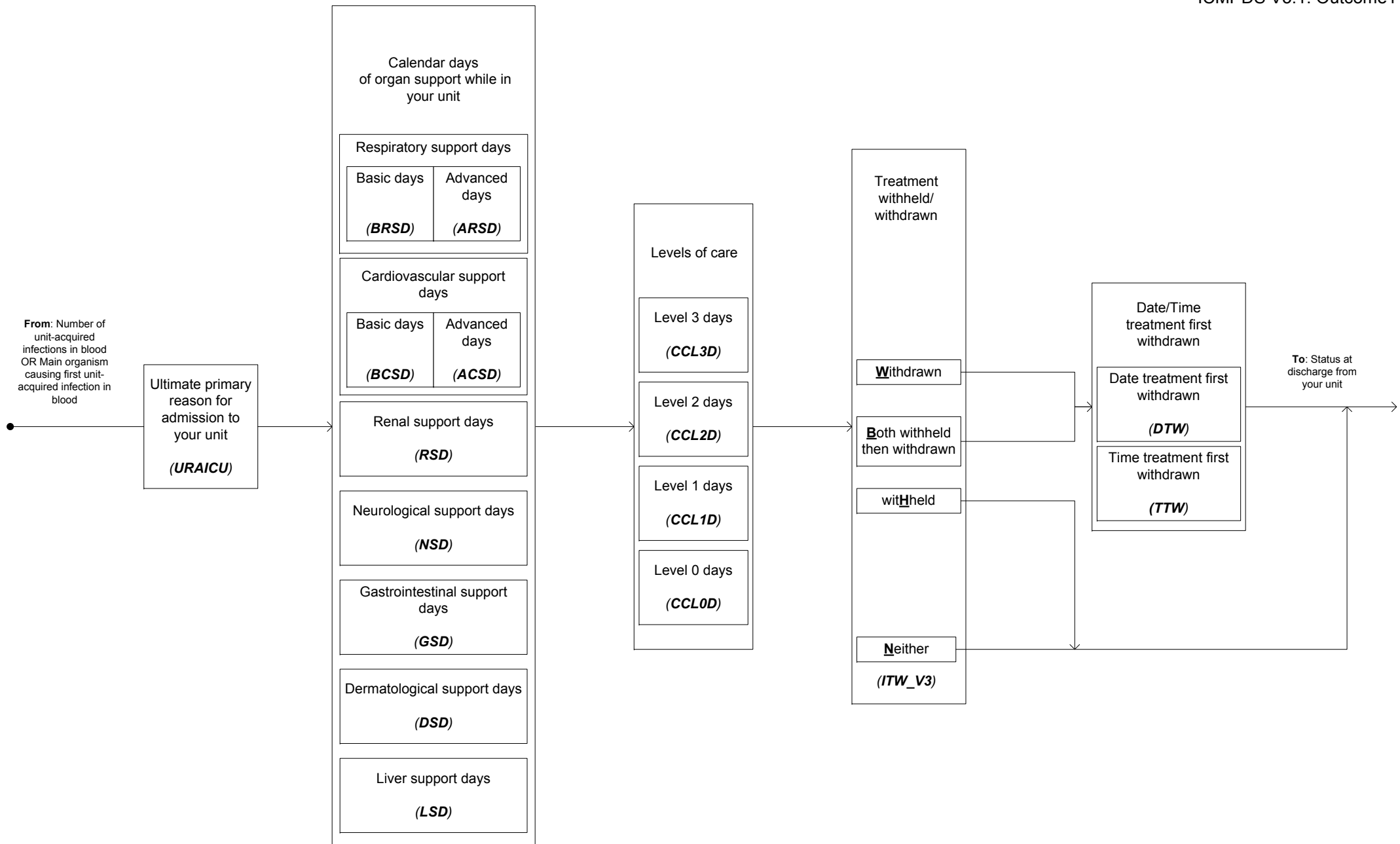


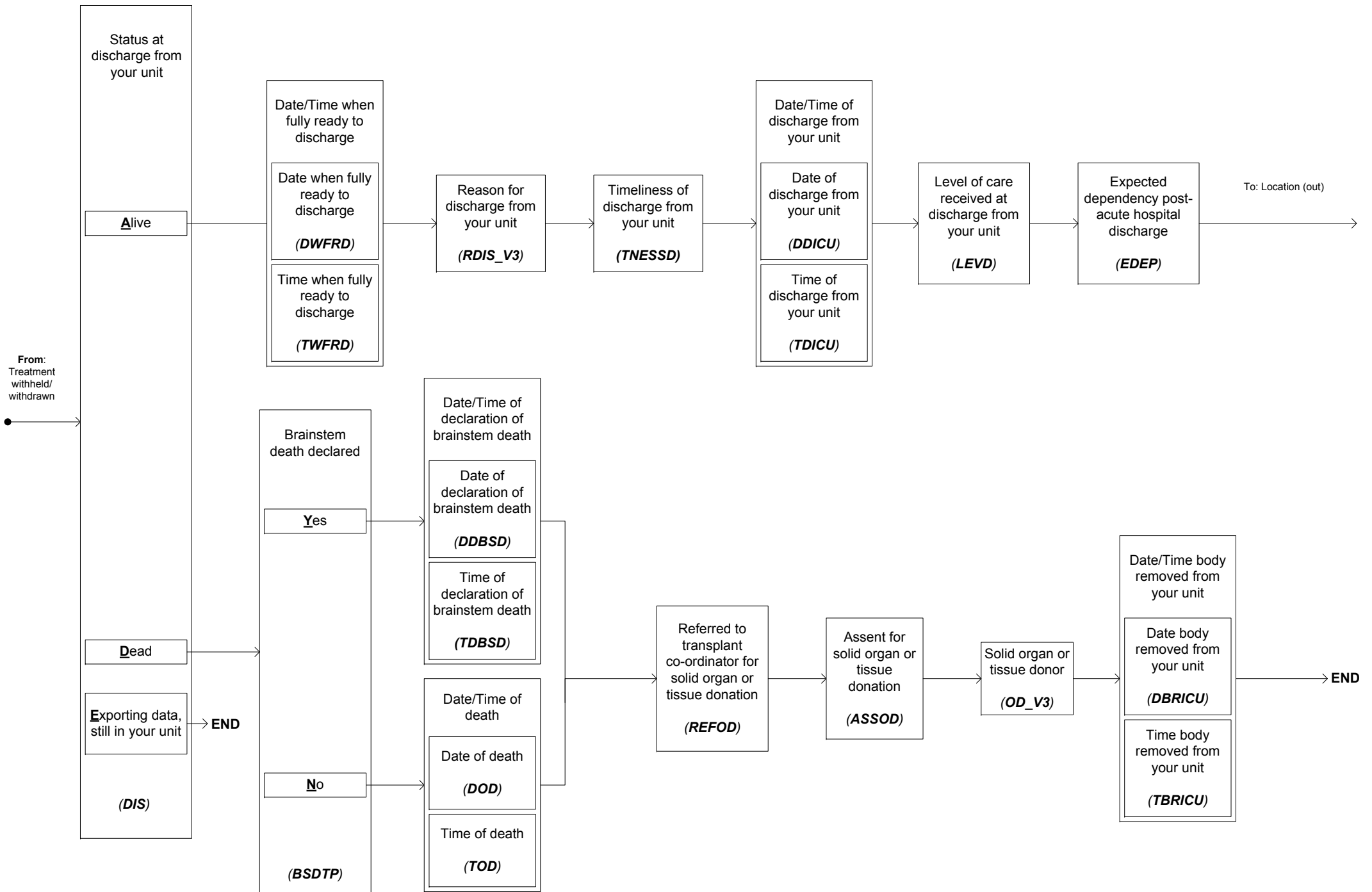


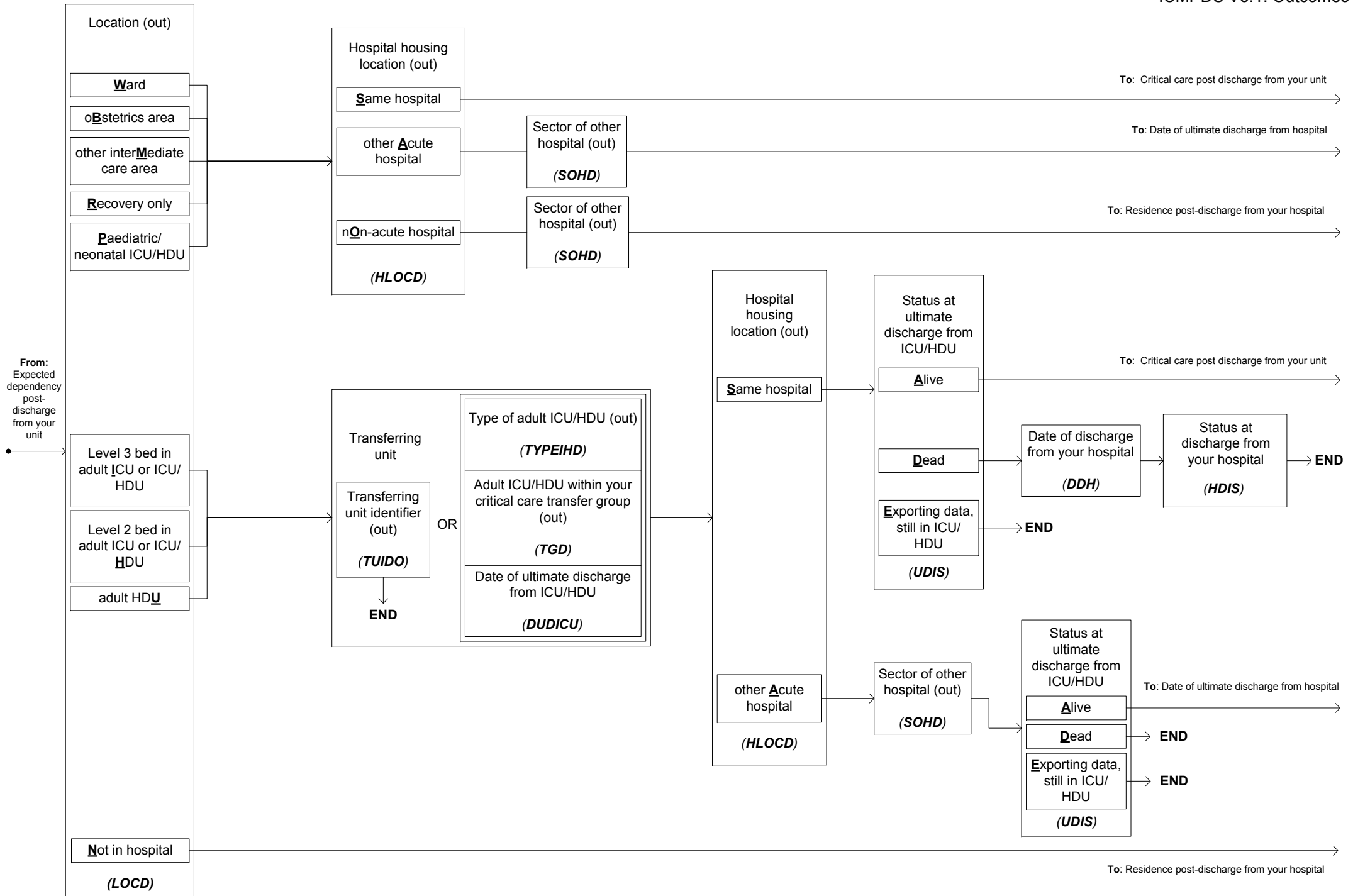






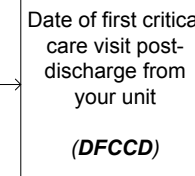
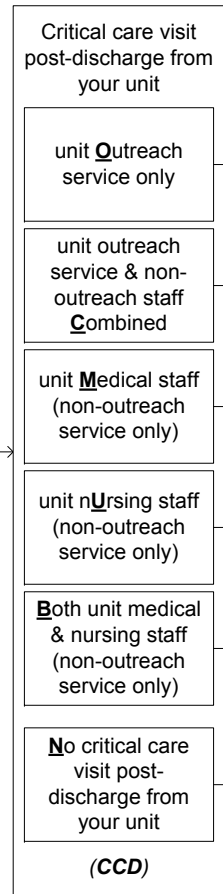






From: (Location (out) = W,B,M,R or P & Hospital housing location (out) = A) OR (Location (out) = I,H or U & Hospital housing location (out) = A & Status at ultimate discharge from ICU/HDU = A)

To: Date of ultimate discharge from hospital



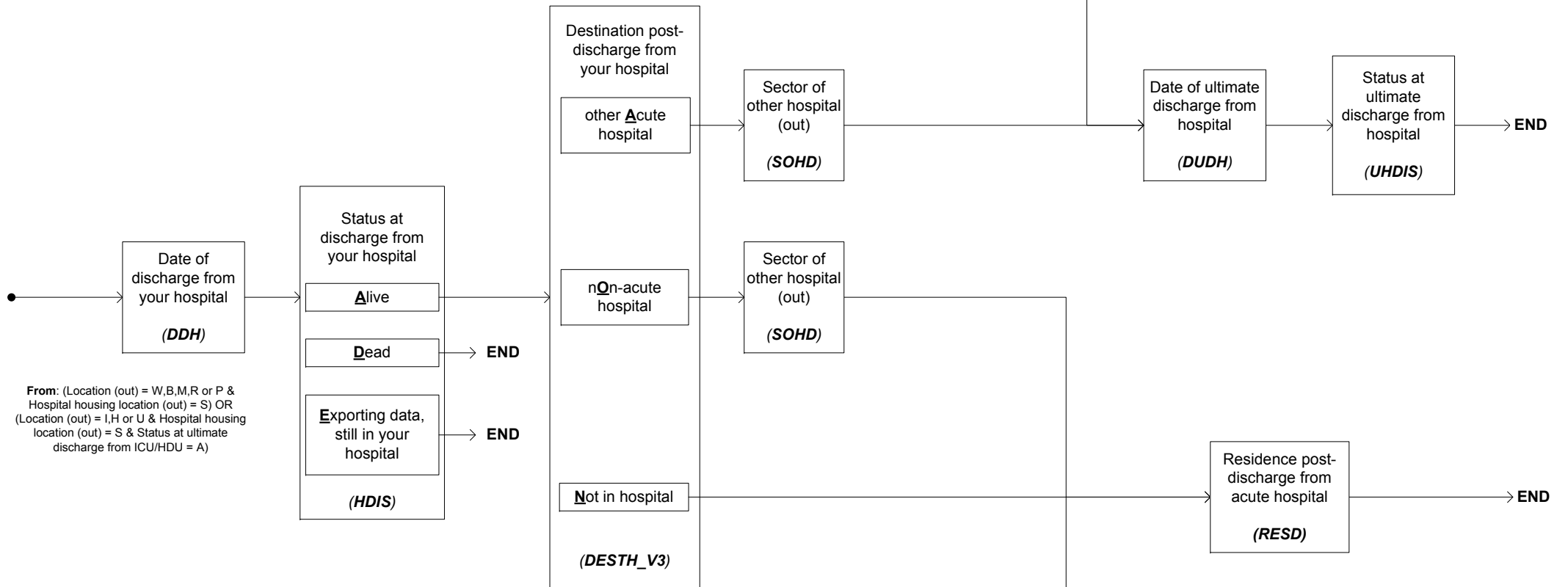
From: (Location (out) = W,B,M,R or P & Hospital housing location (out) = S) OR (Location (out) = I,H or U & Hospital housing location (out) = S & Status at ultimate discharge from ICU/HDU = A)

To: Date of discharge from your hospital

From: (Location (out) = W,B,M,R or P & Hospital housing location (out) = O) OR Location (out) = N

To: Residence post-discharge from your hospital

From: (Location (out) = W,B,M,R or P & Hospital housing location (out) = A) OR (Location (out) = I,H or U & Hospital housing location (out) = A & Status at ultimate discharge from ICU/HDU = A)



From: (Location (out) = W,B,M,R or P & Hospital housing location (out) = S) OR (Location (out) = I,H or U & Hospital housing location (out) = S & Status at ultimate discharge from ICU/HDU = A)

From: (Location (out) = W,B,M,R or P & Hospital housing location (out) = O) OR Location (out) = N