

CMP case mix and outcome summary statistics

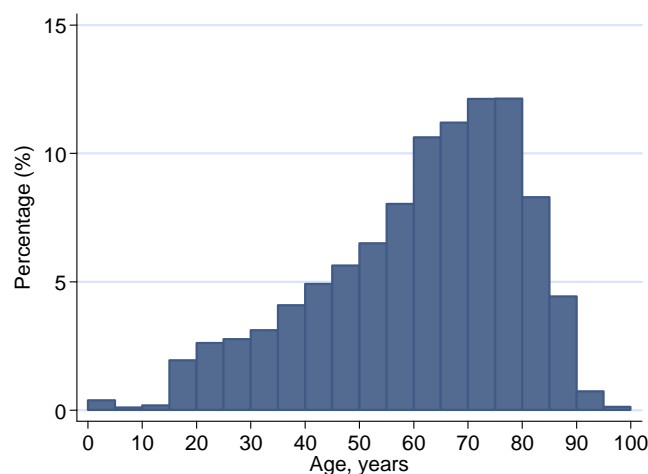
Based on 96,810 admissions to 188 NHS adult, general critical care units, 1 April 2009 to 31 March 2010

Demographics

Number of admissions	96,810
Number of patients	89,618
Age (years), mean (SD)	60.5 (18.4)
Sex (male), n (%)	54,320 (56.1)
Number of severe conditions in past medical history*, n (%)	0 80,394 (83.7) 1 11,074 (11.5) 2 3,579 (3.7) 3 or more 970 (1.0)
Surgical status, n (%)	Elective/scheduled 21,700 (22.4) Emergency/urgent 17,741 (18.3) Non-surgical 57,362 (59.3)

© ICNARC 2011

*No evidence to assess past medical history for 788 (0.8%) admissions



© ICNARC 2011

ICNARC (2009) model

Physiology score, mean (SD)	17.5 (9.6)
Predicted acute hospital mortality* (%), median (IQR)	17.0 (5.3, 42.5)
Overall predicted acute hospital mortality* (%)	26.7

© ICNARC 2011

*Excluding 21 (0.02%) admissions with insufficient data

Readmissions

Readmission within 48 hours, n (%*)	1,284 (1.8)
Readmission after 48 hours, n (%*)	2,988 (4.2)

© ICNARC 2011

*Percentage of all admissions discharged alive to a location in the same hospital. (n=71,974)

Mortality

CMP unit mortality*, n (%)	All admissions	16,319 (16.9)
	Elective/scheduled	445 (2.1)
	Emergency/urgent	2,274 (12.8)
	Non-surgical	13,600 (23.7)
Ultimate acute hospital mortality**, n (%)	All admissions	23,077 (25.2)
	Elective/scheduled	1,217 (5.7)
	Emergency/urgent	3,631 (21.7)
	Non-surgical	18,229 (34.0)

© ICNARC 2011

*Mortality at discharge from the CMP unit. Excluding 1 (0.001%) admission with missing data

**Excluding: 4,333 (4.5%) readmissions within the same acute hospital stay; 790 (0.9%) admissions with missing data

Length of stay (LOS)

		Median (IQR)	Mean (SD)
CMP unit LOS* (days)	All admissions	2.2 (1.0, 5.2)	5.0 (8.5)
	Unit survivors	2.2 (1.0, 5.1)	4.9 (8.3)
	Unit non-survivors	2.1 (0.7, 6.0)	5.4 (9.5)
Total acute hospital LOS** (days)	All admissions	13 (6, 28)	23.4 (32.7)
	Acute hospital survivors	14 (7, 30)	25.3 (33.7)
	Acute hospital non-survivors	8 (3, 21)	17.8 (28.8)

© ICNARC 2011

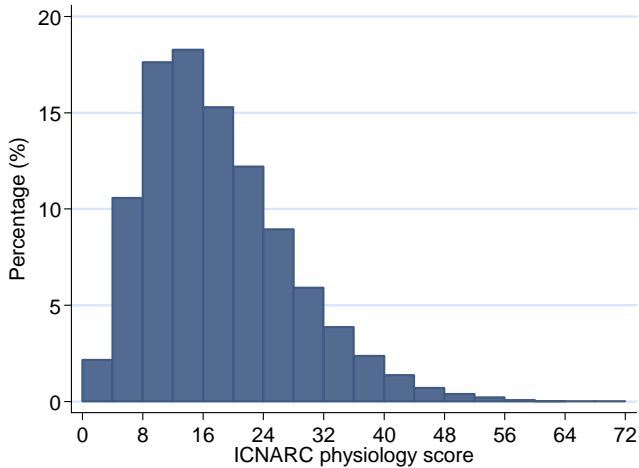
*Does not include continuous critical care pre-/post-admission to the CMP unit. Excluding 11 (0.01%) admissions with missing data

**Excluding: 4,333 (4.5%) readmissions within the same acute hospital stay; 790 (0.9%) admissions with missing data

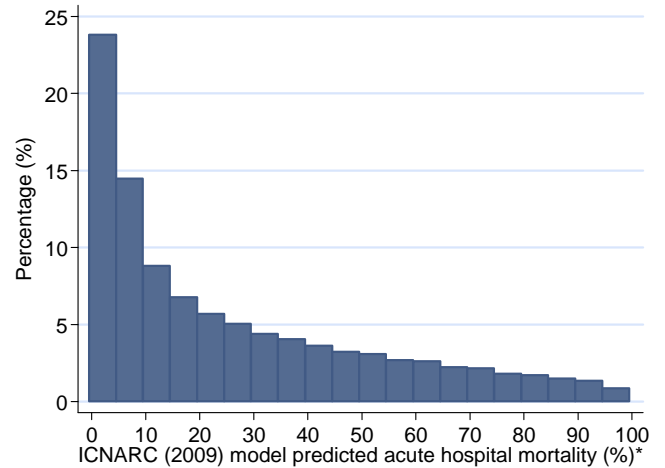
CMP case mix and outcome summary statistics

Based on 96,810 admissions to 188 NHS adult, general critical care units, 1 April 2009 to 31 March 2010

Distribution of ICNARC physiology score and ICNARC (2009) model predicted acute hospital mortality



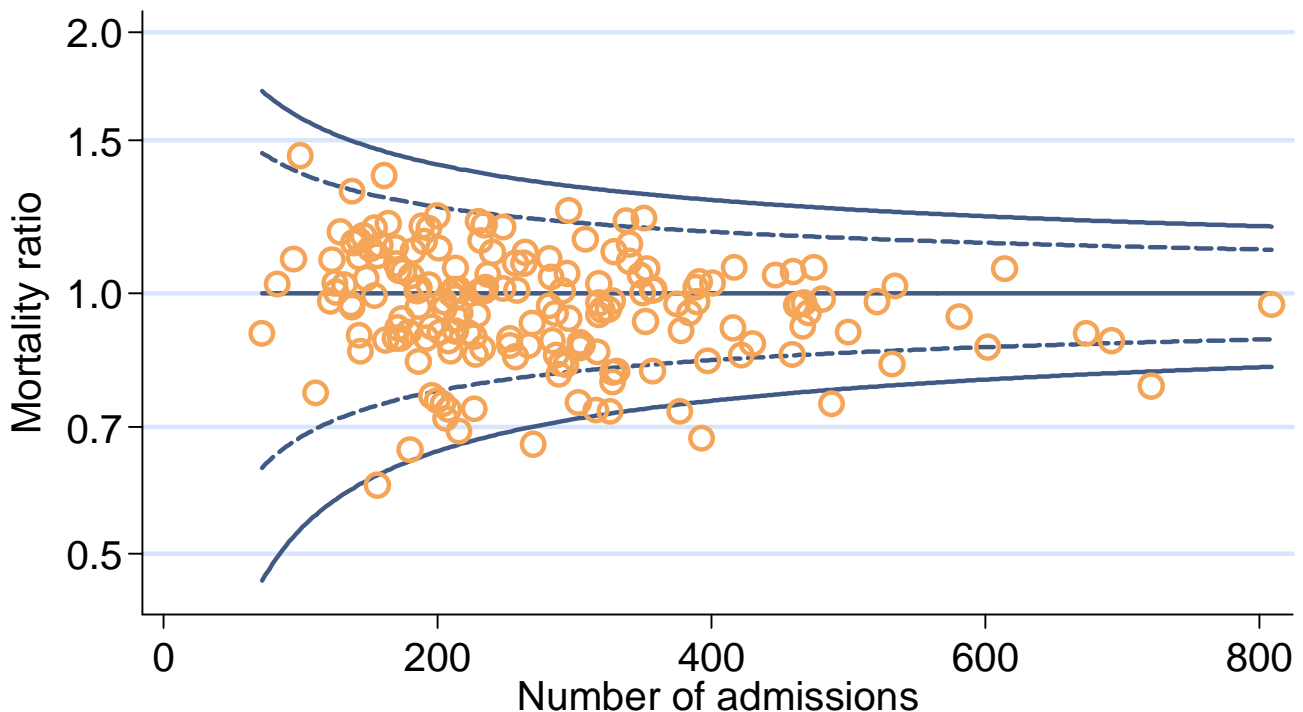
© ICNARC 2011



© ICNARC 2011

*Excluding 21 (0.02%) admissions with insufficient data

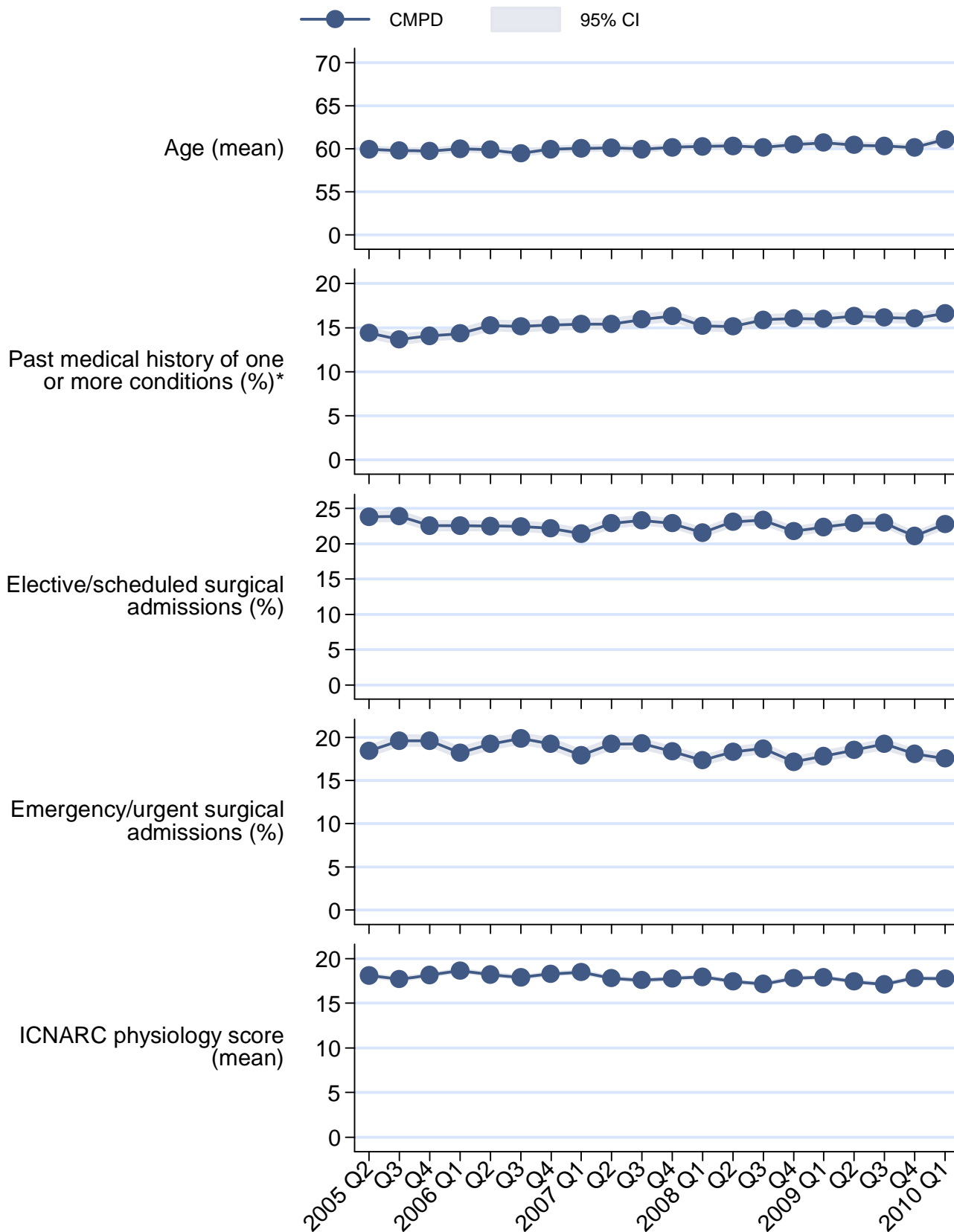
Funnel plot of mortality ratio – ICNARC (2009) model



© ICNARC 2011

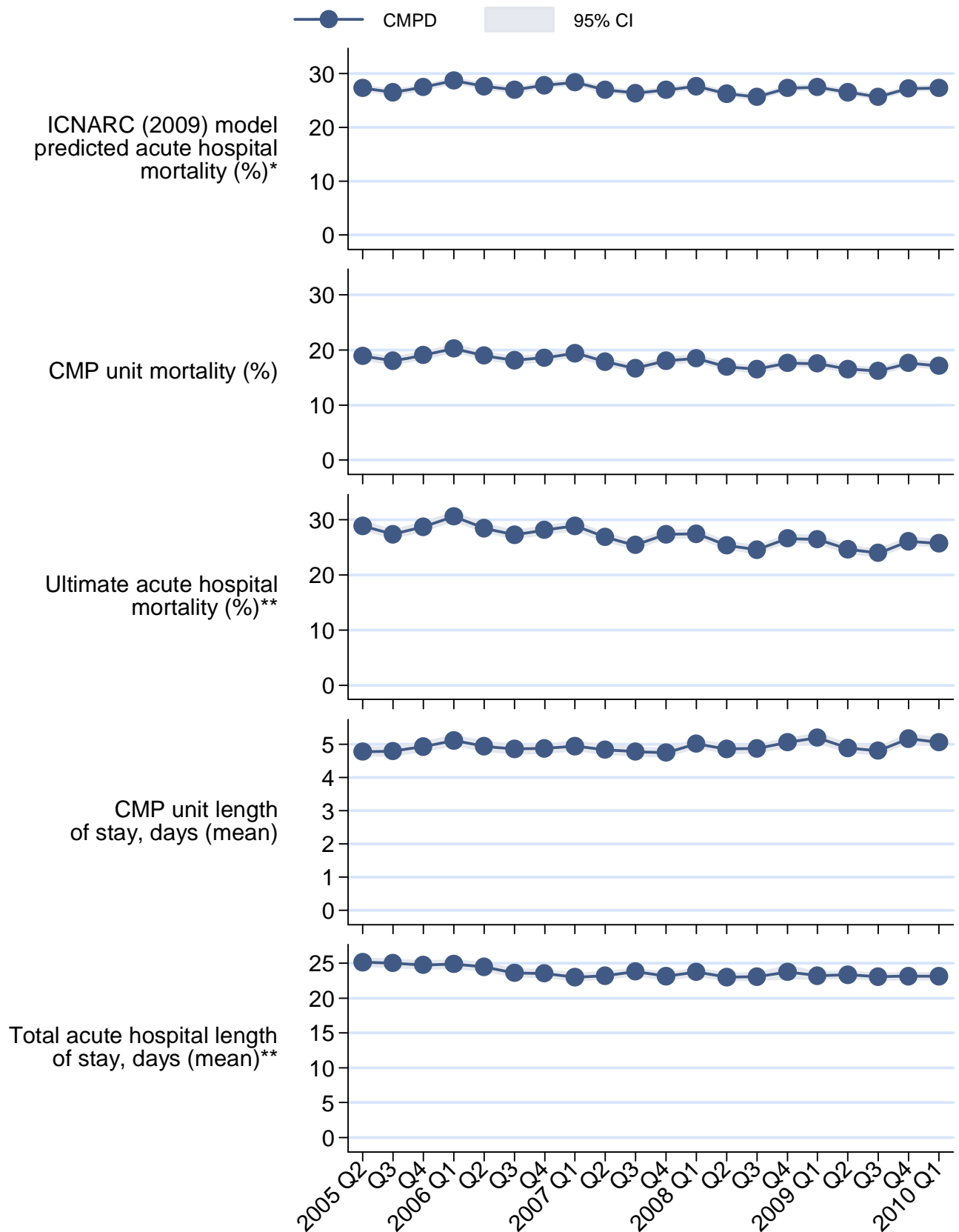
*Based on the last six months validated data for each unit from 1 April 2009 to 31 March 2010

CMP case mix and outcome trends



*Excluding 6,659 (1.6%) admissions with no evidence to assess past medical history

CMP case mix and outcome trends



© ICNARC 2011

*Excluding 236 (0.06%) admissions with insufficient data

**Excluding 20,808 (4.9%) readmissions within the same acute hospital stay