

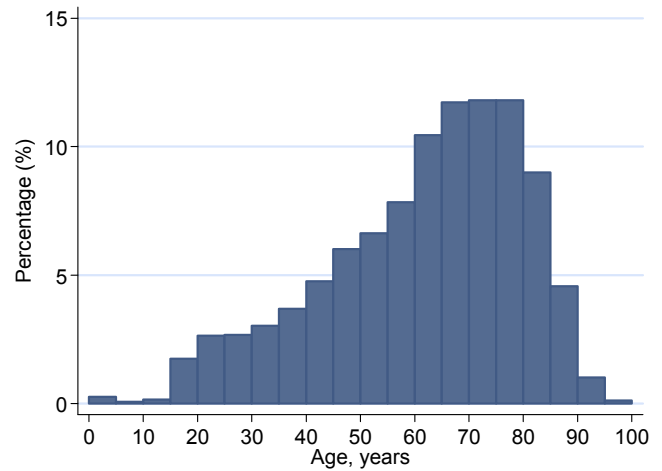
# Key statistics from the Case Mix Programme Database

Based on 131,479 admissions to 205 NHS adult, general critical care units, 1 April 2011 to 31 March 2012

## Demographics

Number of admissions	131,479
Number of patients	121,422
Age (years), mean (SD)	61.0 (18.2)
Sex (male), n (%)	72,944 (55.5)
Number of severe conditions in past medical history*, n (%)	0 107,822 (82.6)
	1 15,951 (12.2)
	2 5,324 (4.1)
	3 or more 1,479 (1.1)
Surgical status, n (%)	Elective/scheduled 31,412 (23.9)
	Emergency/urgent 23,498 (17.9)
	Non-surgical 76,564 (58.2)

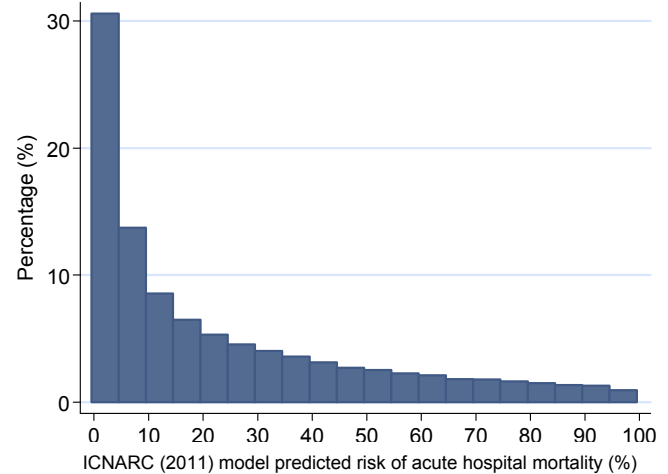
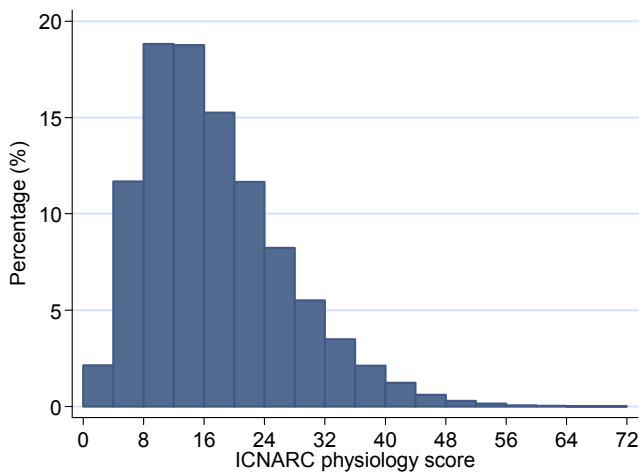
\* No evidence to assess past medical history for 902 (0.7%) admissions



ICNARC physiology score, mean (SD)	16.9 (9.3)
ICNARC (2011) model predicted risk of acute hospital mortality* (%), median (IQR)	13.1 (3.7, 37.3)

\* Excluding 9 (<0.01%) admissions with insufficient data

## Distribution of ICNARC physiology score and ICNARC (2011) model predicted risk of acute hospital mortality



\* Excluding 9 (<0.01%) admissions with insufficient data

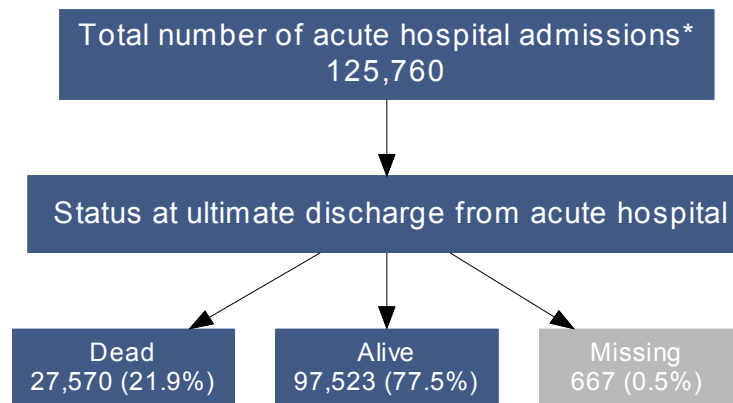
## Infection

On admission	
MRSA, n (%)	2,646 (2.0)
VRE, n (%)	313 (0.2)
C.diff, n (%)	641 (0.5)
Unit-acquired*	
MRSA, n (%)	481 (0.4)
VRE, n (%)	283 (0.2)
C.diff, n (%)	340 (0.3)
Unit-acquired infections present in blood, n (%)	1,061 (0.8)

\* Identified in critical care unit for admissions staying 48 hours or more and excluding those with same infection identified in the first 48 hours.

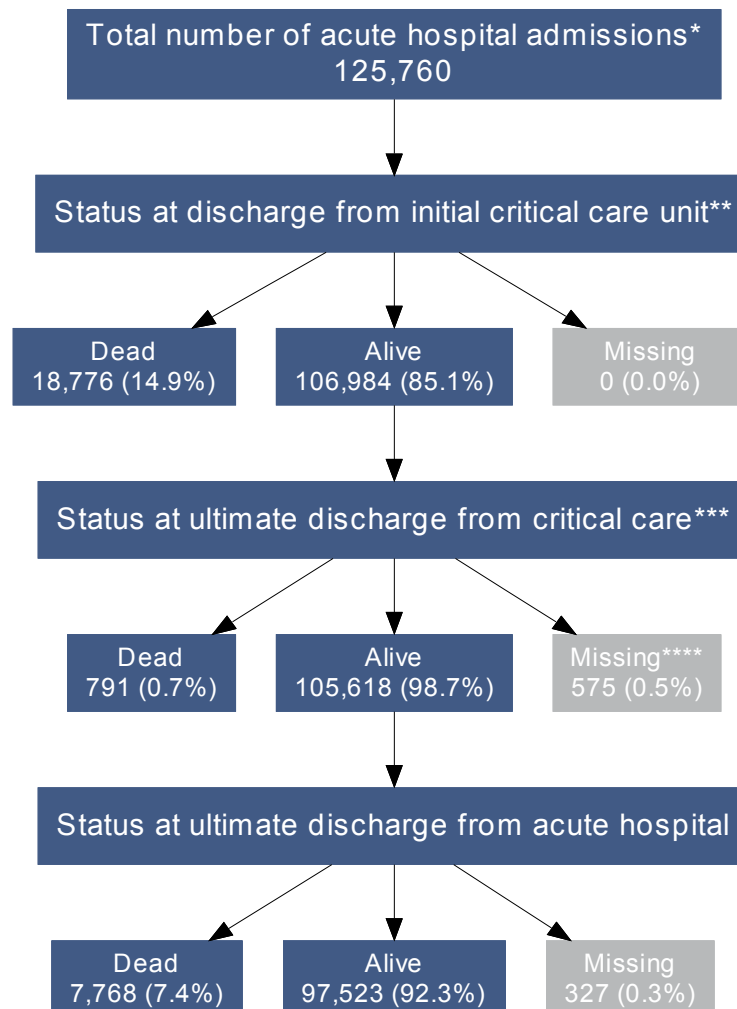
## Overall outcome flow

The overall outcome flow shows the ultimate outcome for all acute hospital admissions with a critical care unit stay.



## Staged outcome flow

The staged outcome flow shows the outcome at different stages from initial critical care unit discharge to ultimate discharge from acute hospital.



\* Excluding: 5,719 (4.3%) readmissions to the critical care unit during the same acute hospital stay

\*\* Where more than one critical care unit admission exists for a patient during the same hospital stay, then the outcome for the first admission has been used

\*\*\* For all patients discharged alive from the initial critical care unit, including those not transferred to another critical care unit

\*\*\*\* Including: 235 admissions missing ultimate discharge from critical care but known to be dead at ultimate discharge from acute hospital

## Crude mortality

CMP unit mortality*, n (%)	All admissions	19,630 (14.9)
	Elective/scheduled	518 (1.6)
	Emergency/urgent	2,621 (11.2)
	Non-surgical	16,489 (21.5)
Ultimate acute hospital mortality**, n (%)	All admissions	27,570 (22.0)
	Elective/scheduled	1,308 (4.2)
	Emergency/urgent	4,141 (18.5)
	Non-surgical	22,119 (30.8)

\* Mortality at discharge from the CMP unit. 0 (0%) admissions with missing data

\*\* Excluding: 5,719 (4.3%) readmissions within the same acute hospital stay; 667 (0.5%) admissions with missing data

## Length of stay (LOS)

		Median (IQR)	Mean (SD)
CMP unit LOS* (days)	All admissions	2.1 (1.0, 5.0)	4.7 (8.0)
	Unit survivors	2.1 (1.0, 4.9)	4.6 (7.7)
	Unit non-survivors	2.1 (0.8, 5.9)	5.3 (9.5)
Total acute hospital LOS** (days)	All admissions	12 (6, 26)	21.8 (31.1)
	Acute hospital survivors	13 (7, 27)	23.3 (31.5)
	Acute hospital non-survivors	7 (2, 19)	16.6 (29.0)

\* Does not include continuous critical care pre-/post-admission to the CMP unit. Excluding: 5 (<0.01%) admissions with missing data

\*\* Excluding: 5,719 (4.3%) readmissions within the same acute hospital stay; 1,204 (1.0%) admissions with missing data

## Case Mix Programme (CMP) Annual Quality Report

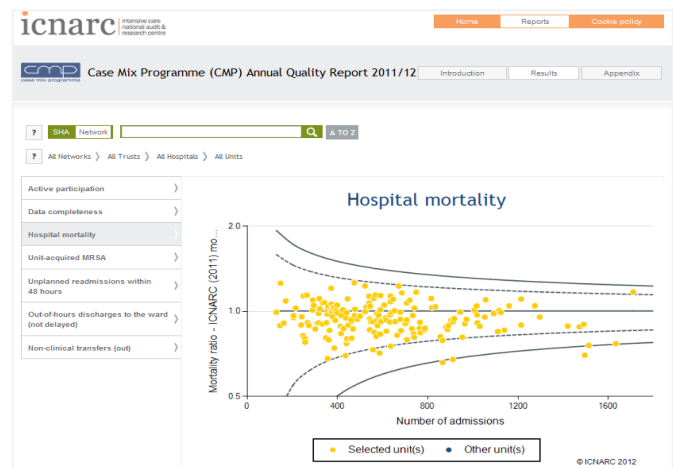
ICNARC publicly reports analyses on risk-adjusted acute hospital mortality and four potential quality indicators.

Ahead of public disclosure, ICNARC requests formal local consent from the:

- Chief Executive of the Trust; and the
- Clinical Director of each participating unit.

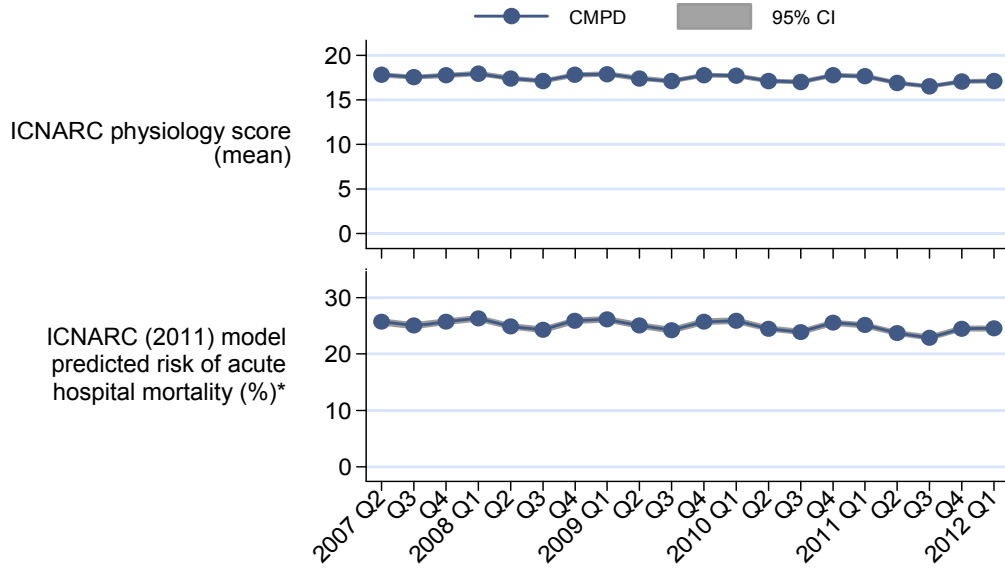
The CMP Annual Quality Report currently provides insight into the quality of adult, general critical care both overall, and at the level of:

- Strategic Health Authority;
- Critical Care Network;
- Trust (or equivalent);
- hospital; and
- individual critical care unit.



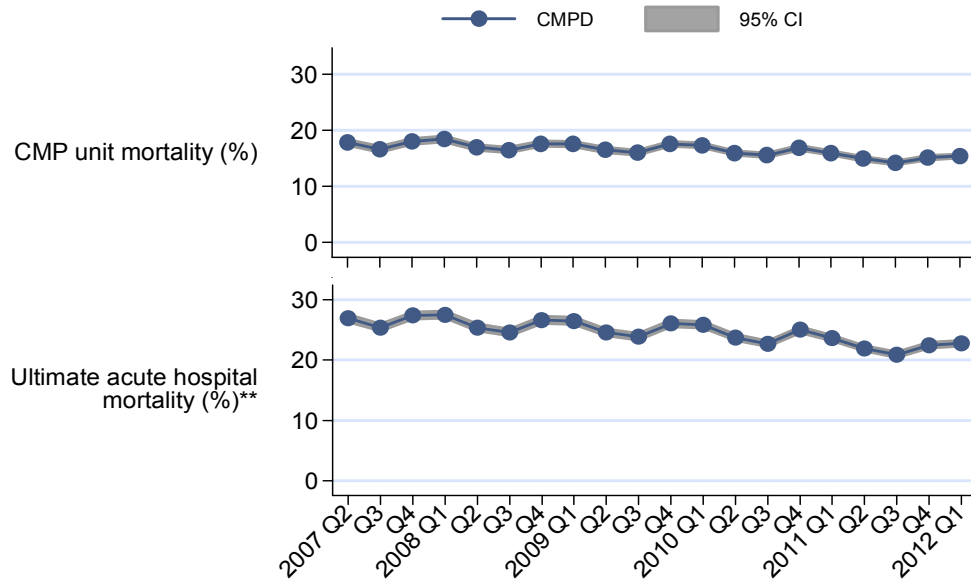
Results are available to view on ICNARC's online reporting site at <https://onlinereports.icnarc.org>

### ICNARC physiology score and ICNARC (2011) model

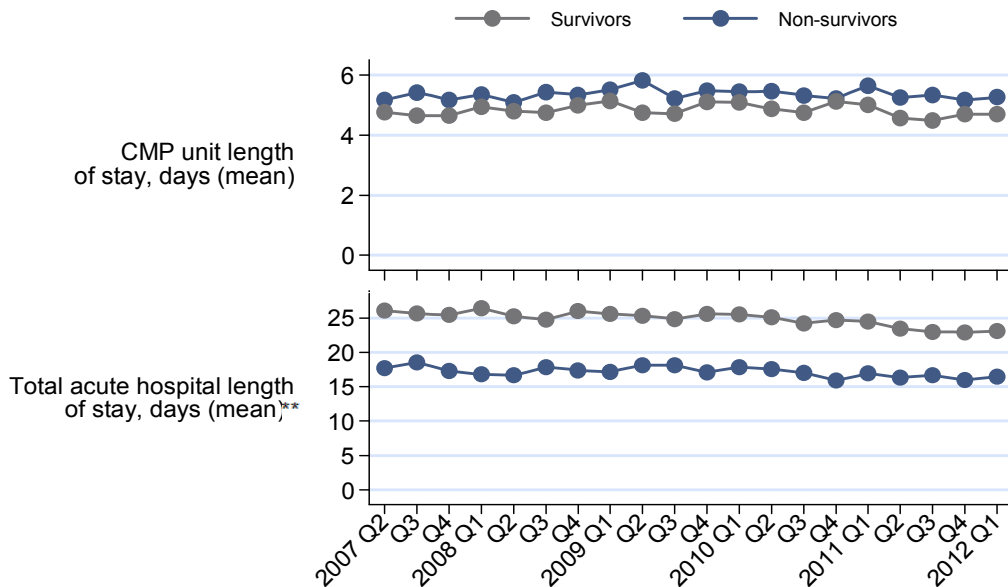


\* Excluding: 91 (0.02%) admissions with insufficient data

### Mortality



### Length of stay



\*\* Excluding: 24,532 (4.6%) readmissions within the same acute hospital stay